

# 655 THIRD AVENUE

**PARTIAL FLOOR 9**  
SUITE 900  
6,610 SF



BUILDING EXTERIOR



LOBBY

## AVAILABILITY

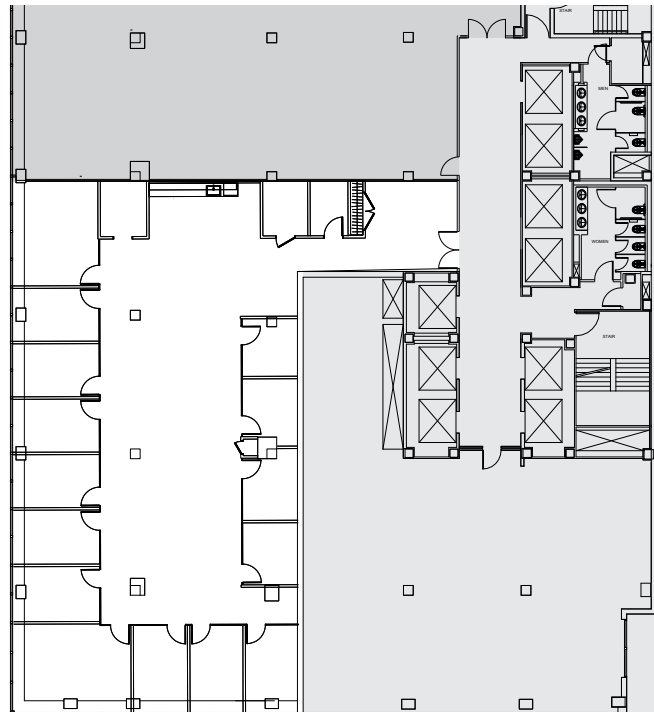
- Corner Unit
- Built Space
- Office Intensive Layout
- Available Q2 2025

## PROPERTY FEATURES

- One block from Grand Central Terminal
- Renovated lobby includes a new concierge desk and turnstiles
- Green roofs and exclusive outdoor terraces
- LEED Gold certification under LEED v4 Existing Buildings: Operations + Maintenance

## AS-BUILT PLAN

East 42<sup>nd</sup> Street



East 41<sup>st</sup> Street