

FOR SUBLEASE

64 West 48th Street

DIAMOND DISTRICT
NEW YORK, NY

Area

12th Floor: 6,663 SF

Term

February 2027

Asking

Negotiable

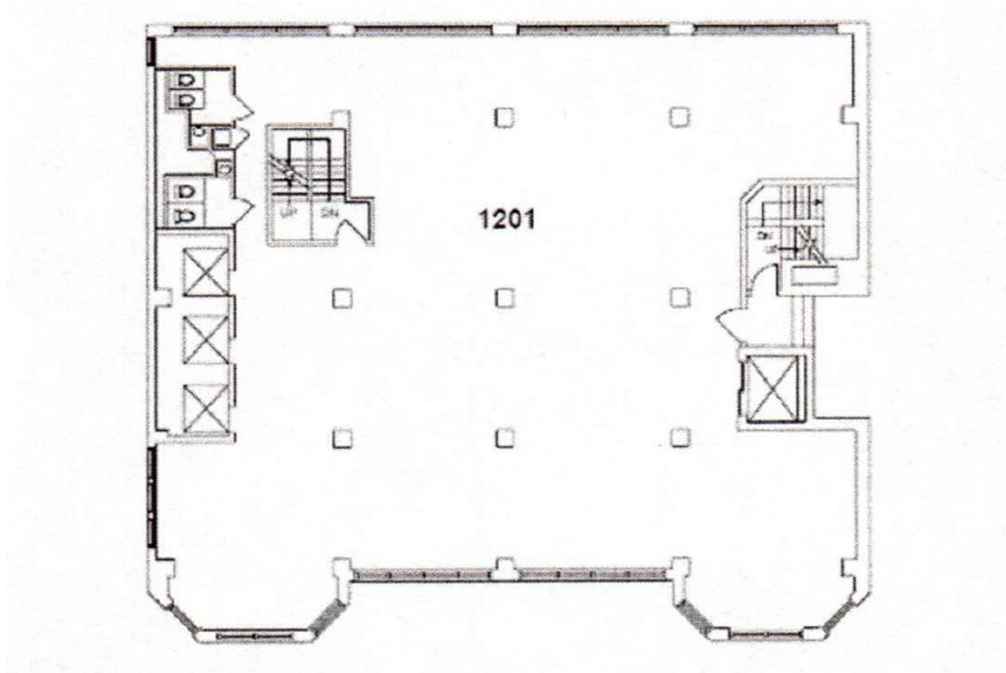
Space Type

Office / Jeweler Space

Highlights

- Full-floor identity with direct elevator presence
- Close proximity to the (B, D, F, M) subway station
- Move-in ready installations for multiple uses
- Located in the heart of New York's Diamond District
- Steps from Grand Central Station
- Well-capitalized sublandlord
- Spaces to be leased together or separately
- Strong ownership group

12th Floor – 6,663 RSF



SPACE NOTES

- Secure Entry Vestibule with badge-access system, surveillance camera, and built-in pass-through window
- Existing water hookups and utility sinks
- Industrial power capacity with extensive wall outlets
- Wired for multiple workstations
- Mix of Open Area & Enclosed Rooms – ideal for light manufacturing, assembly, and office operations
- Polished Hardwood and Industrial Vinyl Flooring throughout
- In-Place Vault Room for inventory
- Dedicated Rooms with Water Lines – suitable for cleaning, processing, or polishing stations

