

FOR SUBLEASE | PARTIAL 15TH FLOOR: 6,740 SF

1155 AVENUE OF THE AMERICAS

New York, NY



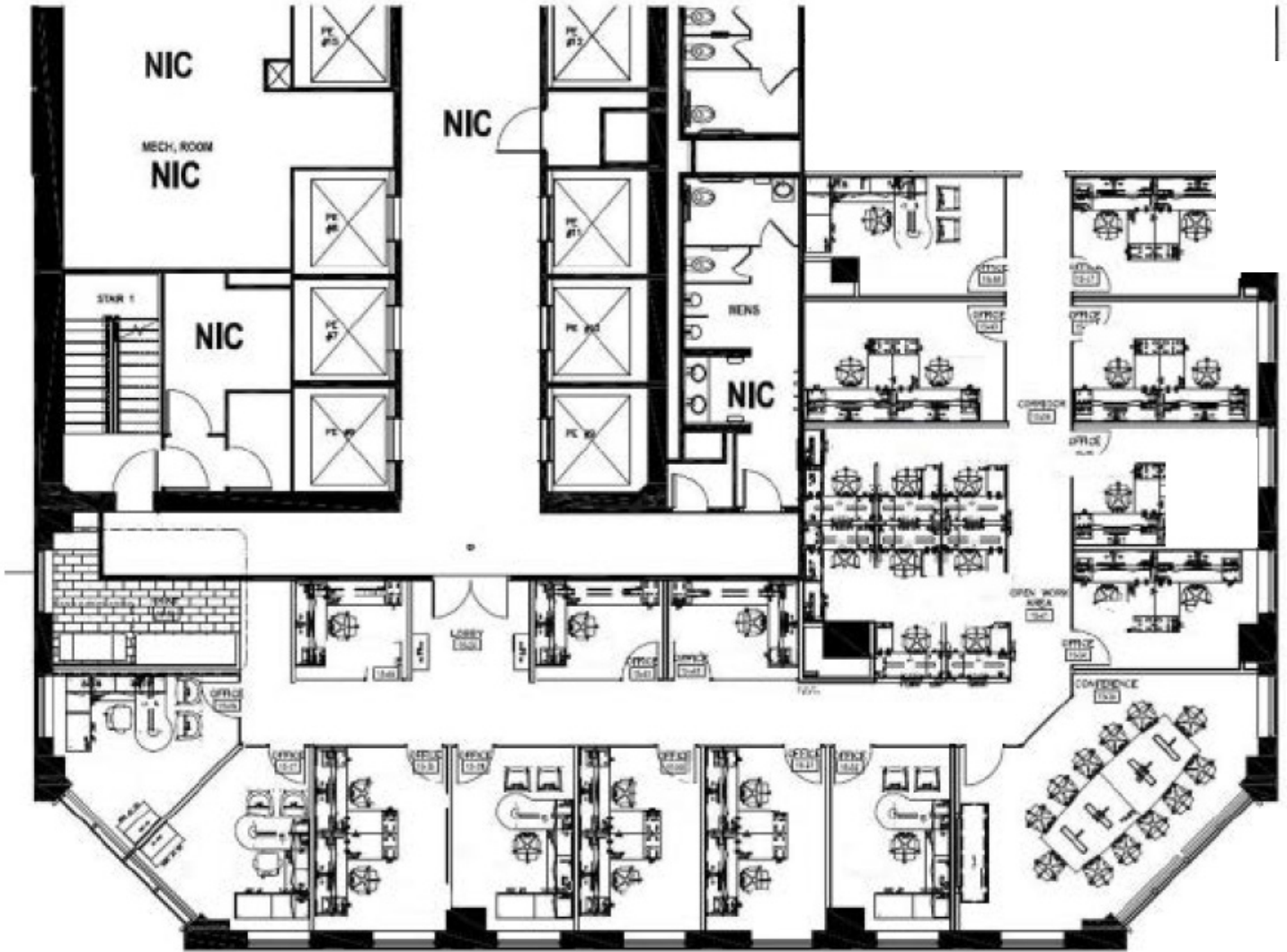
PRICING
Rent Upon
Request

SUBLEASE TERM
December
2029

AVAILABILITY
Immediate

PARTIAL 15TH FLOOR

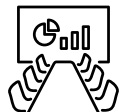
6,740 SF



EXISTING LAYOUT



16 OFFICES



1 LARGE CONFERENCE ROOM FOR 12 PEOPLE



OPEN AREA FOR 8 PEOPLE



COPY/STORAGE AREA



PROPERTY PICTURES

LOCATION MAP



