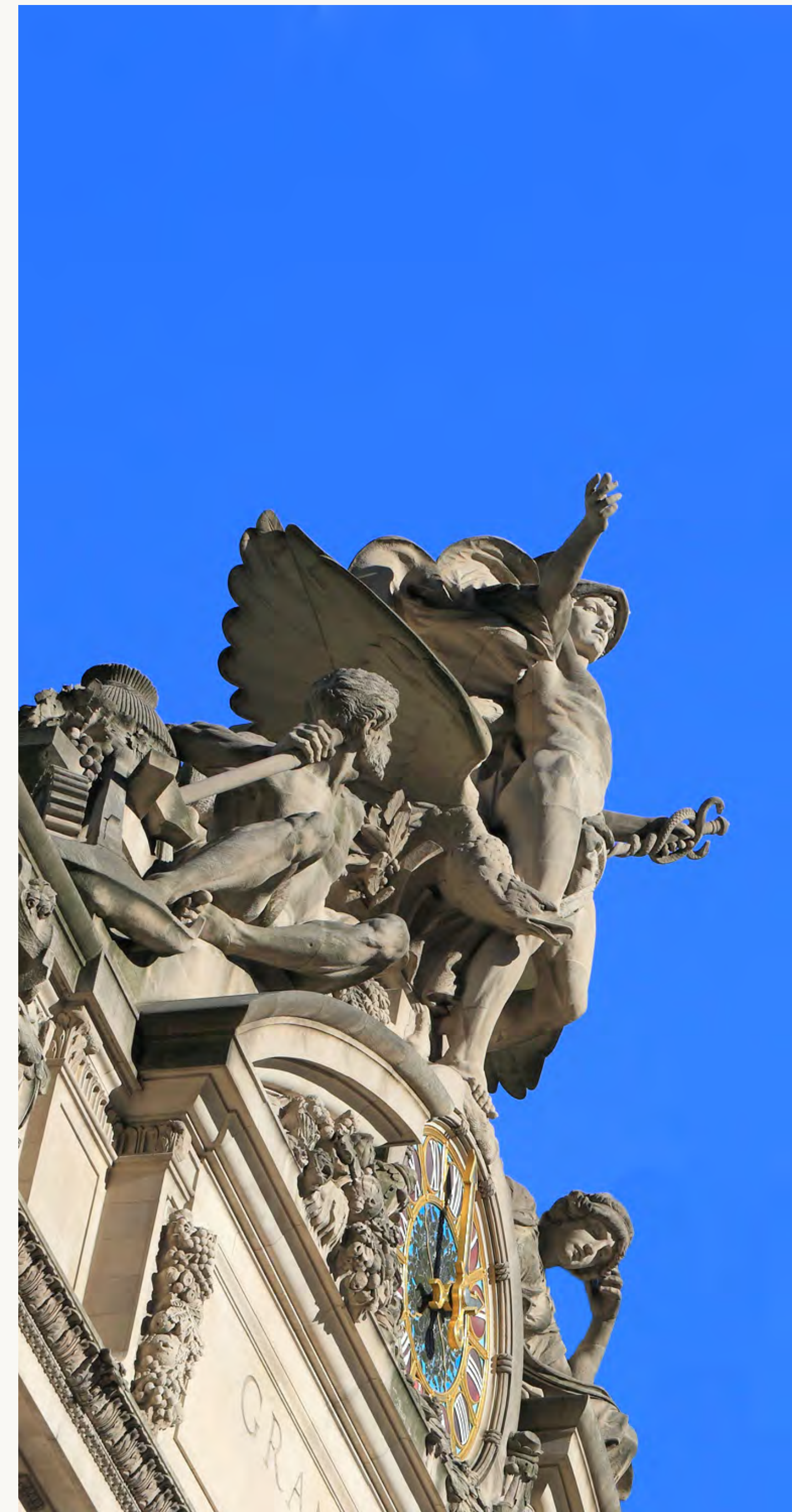


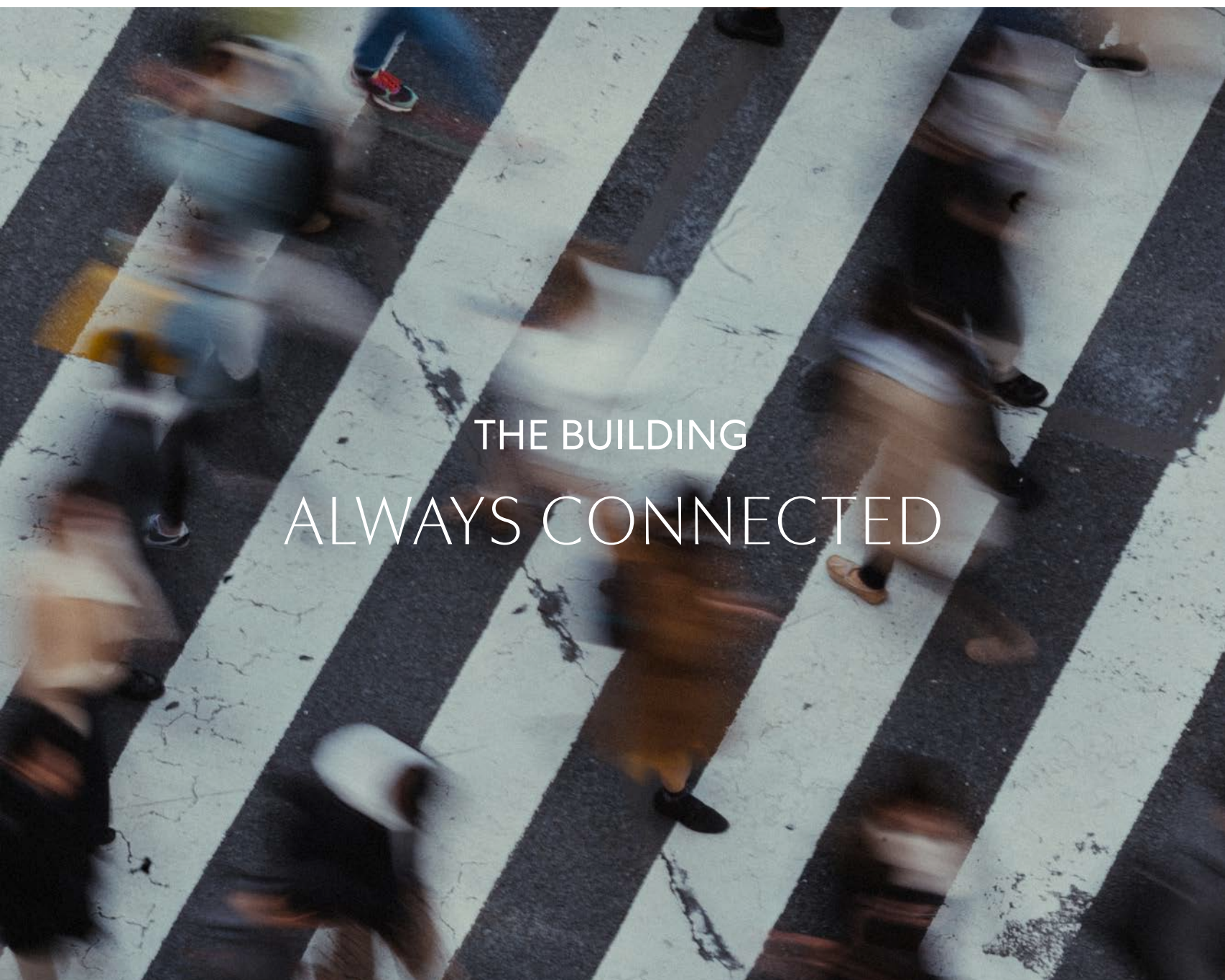


MORE THAN A PLACE TO WORK

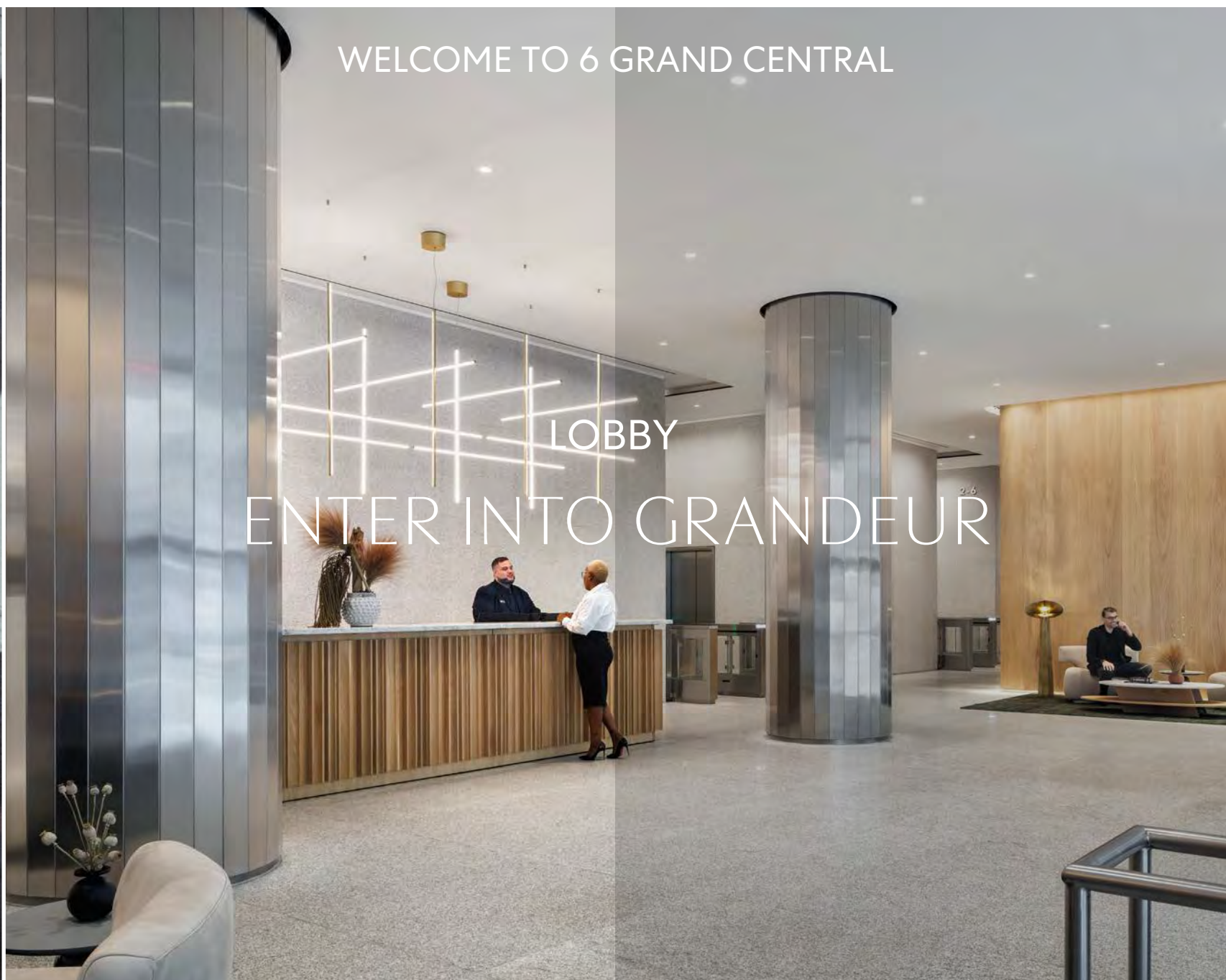
Set in the business capital of the world, 6 Grand Central redefines the future of work by creating tailored solutions and flexibility for the modern workforce. A full spectrum of workspaces with in-building access to Grand Central Terminal and Long Island Rail Road.

666 THIRD AVENUE





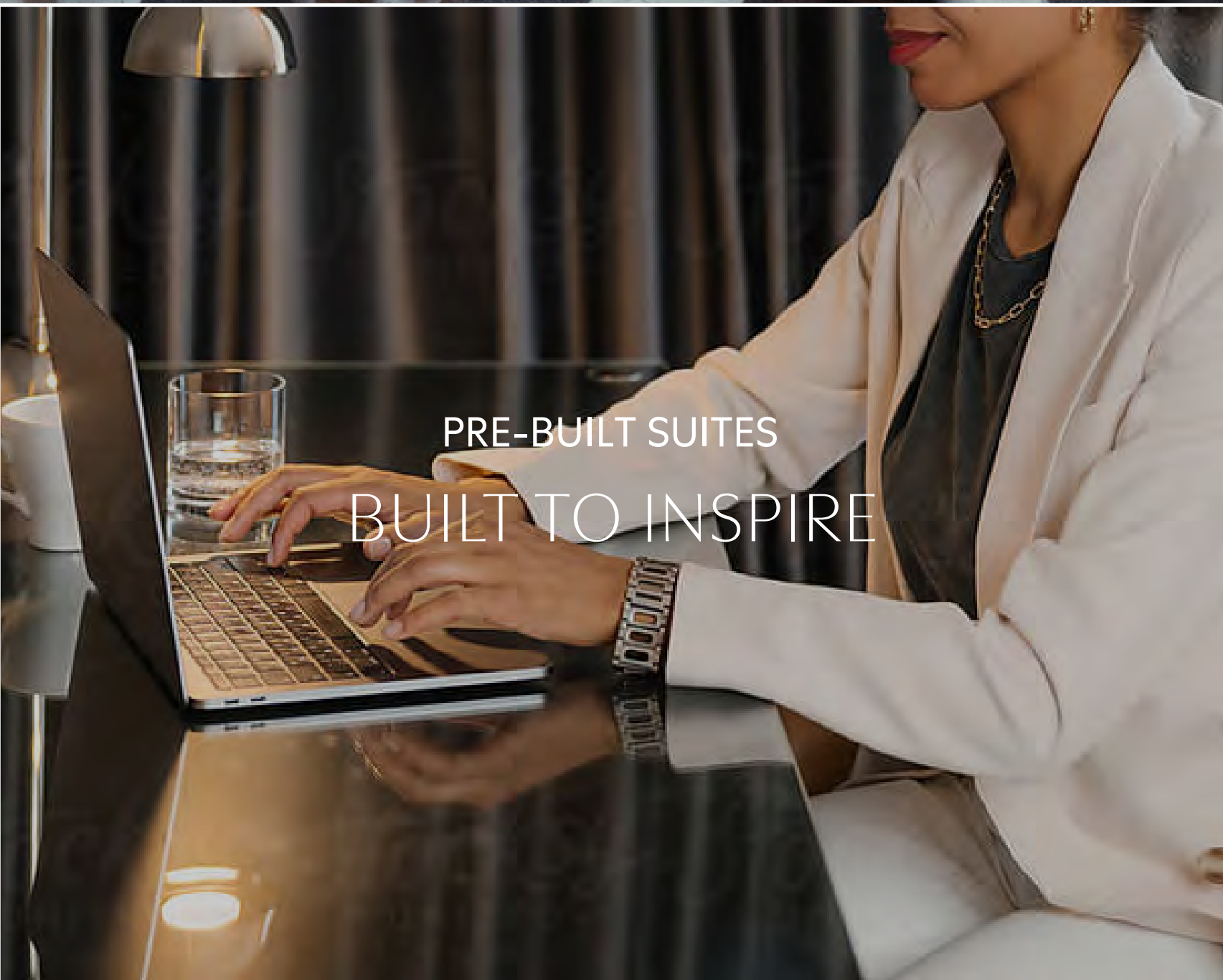
THE BUILDING
ALWAYS CONNECTED



WELCOME TO 6 GRAND CENTRAL
LOBBY
ENTER INTO GRANDEUR



STUDIO
WORKSPACE WITHOUT LIMITS



PRE-BUILT SUITES
BUILT TO INSPIRE



NEIGHBORHOOD
AN ICONIC LOCATION



20+ AMENITIES
BEYOND EXPECTATIONS

THE BUILDING

ALWAYS CONNECTED

AT THE INTERSECTION OF
CONNECTIVITY, CONVENIENCE,
AND CULTURE

Elevate your work address to the heartbeat of New York's premier business district. With in-building entries to Grand Central Terminal and the Long Island Railroad, 6 Grand Central offers a direct ticket to a seamless work-life balance.

6 GRAND CENTRAL



NEIGHBORHOOD

AN ICONIC LOCATION

THE OPPORTUNITY TO CREATE A LIFESTYLE THAT REFLECTS YOUR AMBITION.

1 TO 5 MINS WALKING

- 1 GRAND CENTRAL MARKET
- 2 GRAND CENTRAL OYSTER BAR
- 3 GRAND CENTRAL APPLE STORE
- 4 CIPRIANI
- 5 GRAND CENTRAL STATION
- 6 THE CAPITAL GRILLE
- 7 DELMONICO
- 8 AMMOS ESTIATORIO
- 9 SHAKE SHACK
- 10 BRICK NEW YORK
- 11 CVS
- 12 ARETSKY'S PATROON
- 13 SUSHI YASUDA
- 14 THE UPS STORE
- 15 URBANSPEACE
- 16 LE PAVILLON AT ONE VANDERBILT
- 17 ANDAZ HOTEL
- 18 JACK'S STIR BREW COFFEE
- 19 BLACK SEED BAGELS
- 20 POINT SEVEN
- 21 BOBBY VAN'S
- 22 DOCKS OYSTER BAR
- 23 THE UPS STORE

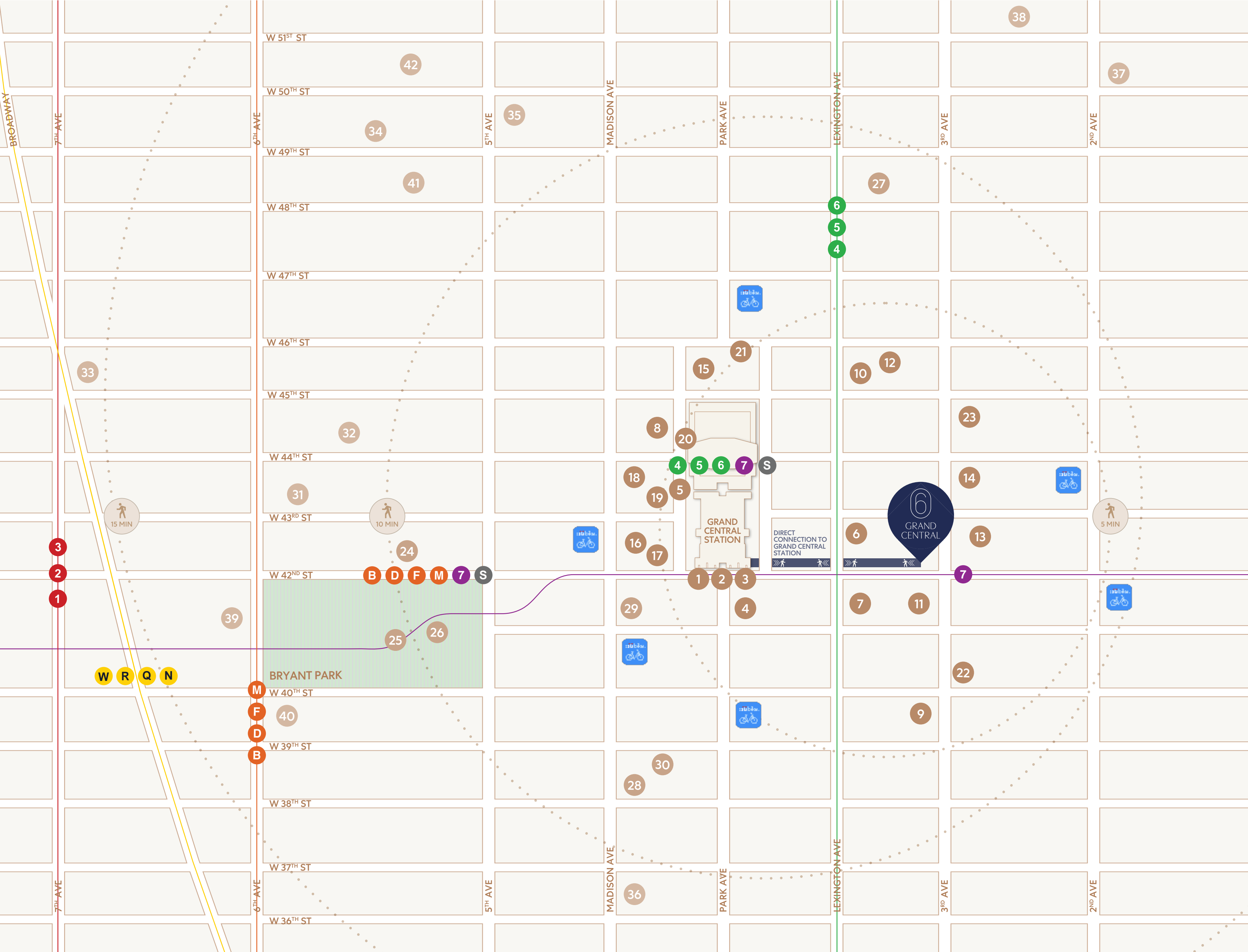
6 TO 10 MINS WALKING

- 24 AMAZON GO
- 25 BRYANT PARK
- 26 NYPL
- 27 AVRA
- 28 ZUMA
- 29 PERA NYC
- 30 THE SHAKESPEARE

11 TO 15 MINS WALKING

- 31 STK STEAKHOUSE MIDTOWN
- 32 KELLARI TAVERNA
- 33 TIMES SQUARE
- 34 ROCKEFELLER CENTER
- 35 SAKS FIFTH AVENUE
- 36 THE MORGAN LIBRARY
- 37 THE SMITH
- 38 GREENACRE PARK
- 39 WHOLE FOODS MARKET
- 40 ANGELINA PARIS
- 41 LODI
- 42 LE ROCK

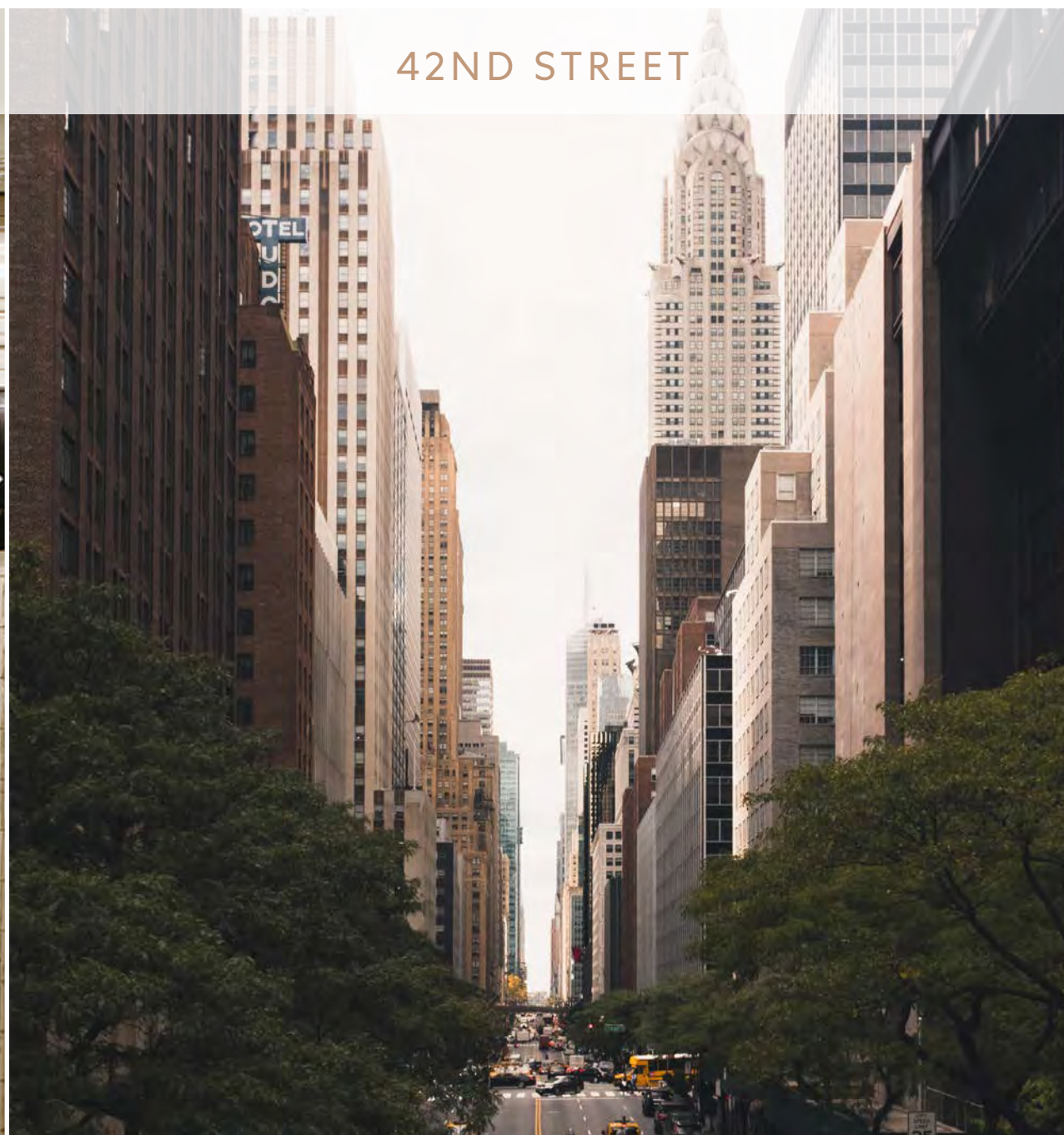
6 GRAND CENTRAL



GRAND CENTRAL STATION CONNECTION



42ND STREET



NEW YORK PUBLIC LIBRARY



BRYANT PARK



ANDAZ HOTEL



SAKS FIFTH AVENUE



NEIGHBORHOOD HIGHLIGHTS

ENTER INTO GRANDEUR

AN ELEGANT OFFICE EXPERIENCE
FROM DOORSTEP TO DESK

Embracing the ethos of hospitality, we design spaces to recharge and foster innovation – from our lobby entrance to your bespoke workspace. Our newly revitalized lobby features two lounge areas by New York-based MdeAS Architects, reimagined with warm finishes, a thoughtfully curated art program, and a signature scent.



ZO AMENITIES

BEYOND EXPECTATIONS

UNLEASH THE POTENTIAL OF
MODERN WORK WITH
UNPARALLELED AMENITIES

Step into the future of work at 6 Grand Central, set to redefine the workplace in Fall 2024. Beyond offering office space, it presents an ecosystem ripe for ambition and growth, featuring state-of-the-art conference rooms, tranquil lounges, and a terrace with sweeping Manhattan views. Here, work transcends traditional boundaries, embracing flexibility and innovation.

Beyond office space, 6 Grand Central is a lifestyle hub, welcoming you into a world that celebrates your work. With a ZO membership, you gain global access to premium workspaces, ensuring that wherever you are, you're supported by unparalleled amenities and the flexibility that modern work demands.

6 GRAND CENTRAL





TERRACE

STUDIO

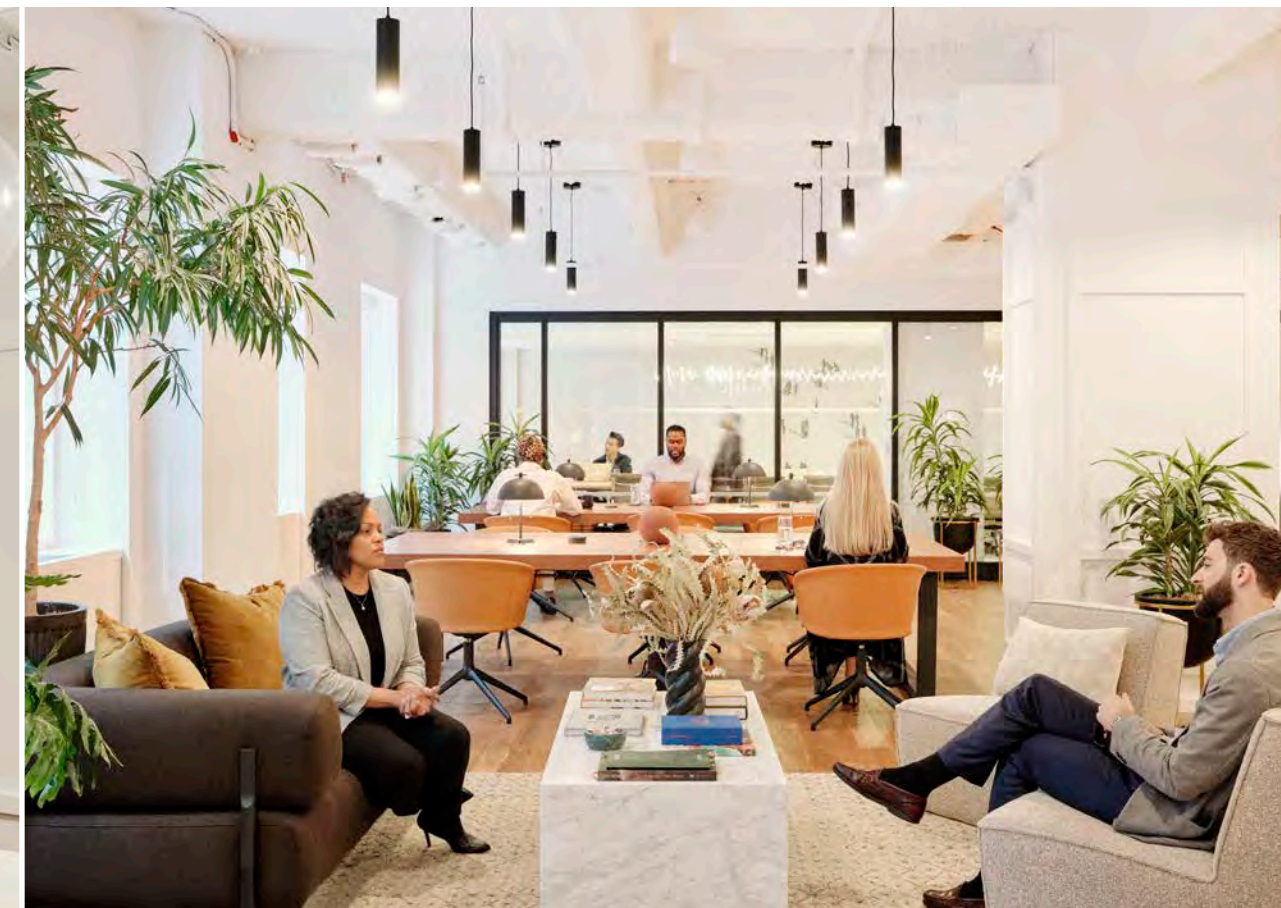
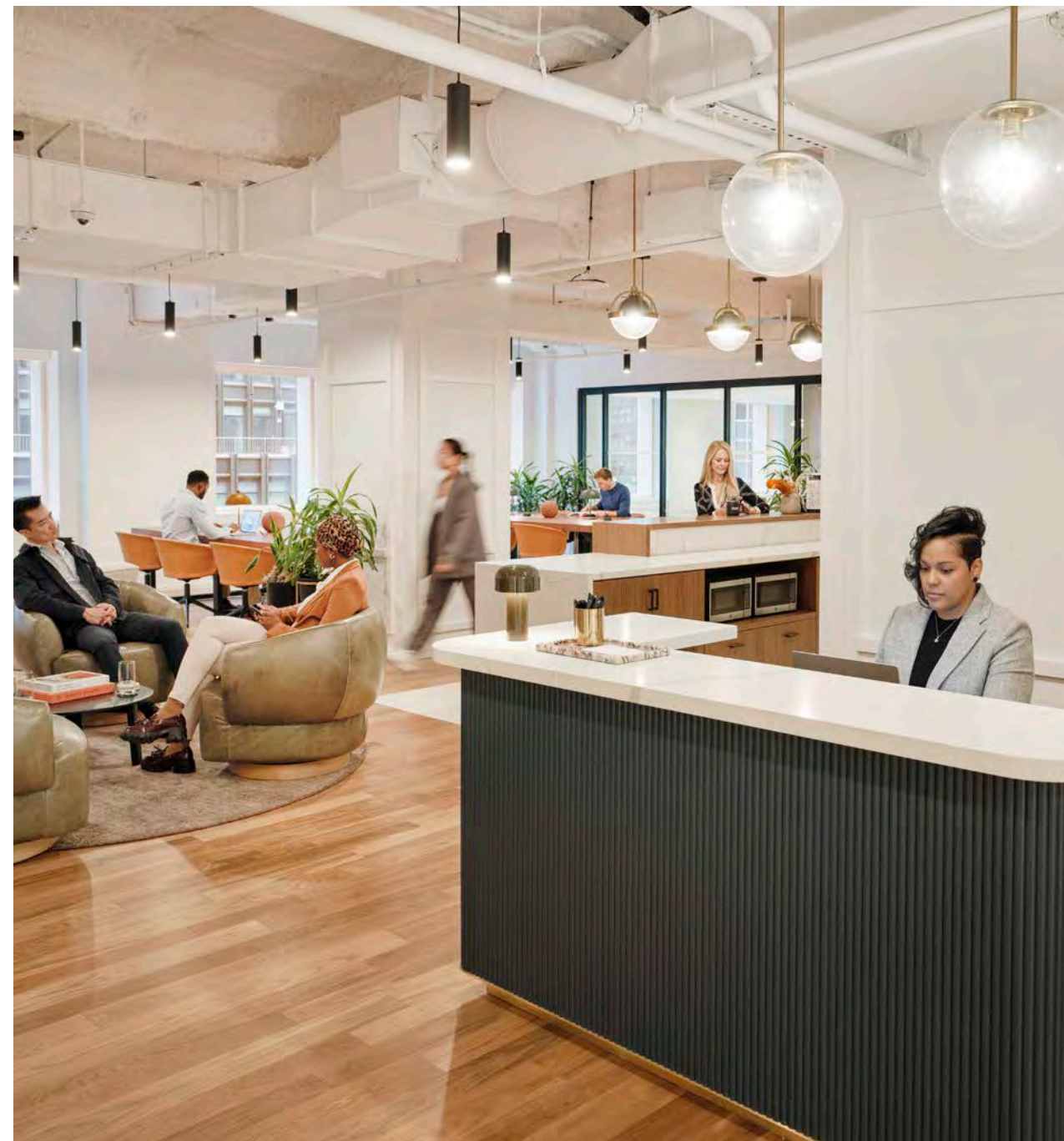
WORKSPACE WITHOUT LIMITS

DISCOVER THE ULTIMATE IN
WORKPLACE FLEXIBILITY

Elevate your business at 6 Grand Central, where workspace flexibility meets urban vibrancy. With Studio, experience adaptable office solutions—from on-demand desks to fully furnished offices and state-of-the-art meeting spaces—all designed to scale with your needs seamlessly.

Expanding your footprint or accommodating visiting team members is effortlessly managed, offering you more space for less. Break free from traditional constraints and thrive in a dynamic environment where collaboration is redefined, ensuring you're always ahead in the city that never sleeps.

6 GRAND CENTRAL



studio
BY TISHMAN SPEYER



PRE-BUILT SUITES

BUILT TO INSPIRE

ELEVATED OFFICES DESIGNED
FOR YOUR SUCCESS

From elevated pre-built suites to full floors, we offer high-end, detail-rich, flexible configurations to fit all your needs. Designed to be a notch above, because your company is a notch above. It's time to make your space work for you.

6 GRAND CENTRAL





