

Turn-key sublease opportunity proximate to Grand Central Terminal

FOR SUBLEASE

529 Fifth Avenue



SPACE PROFILE

Entire 6th: 17,921 SF
Partial 5th: 7,041 SF
Square Footage

24,962 SF
(Interconnecting grand staircase but will sublease separately)
Total SF

Through 9/29/2027
Term

Negotiable
Rental Rate

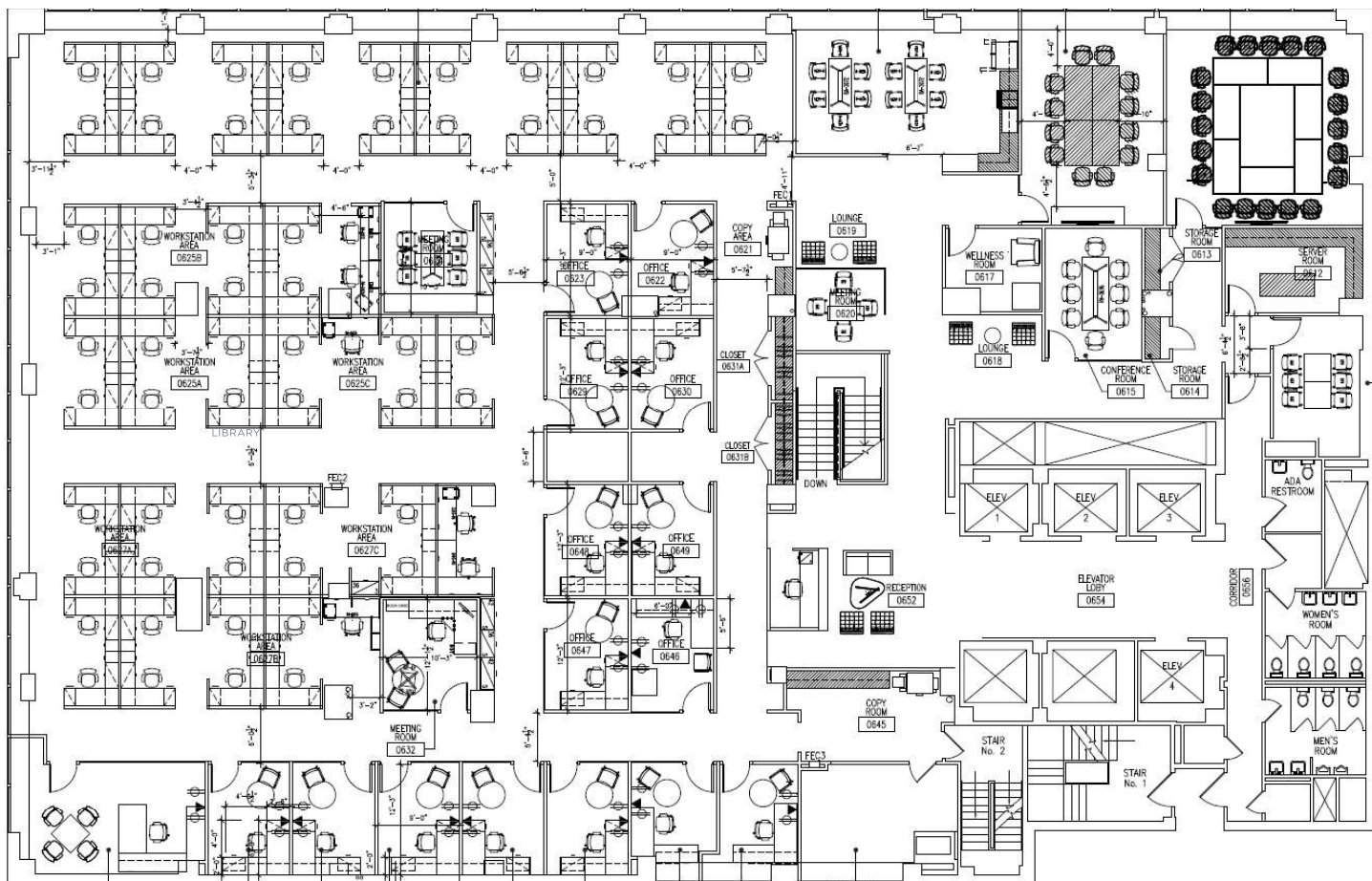
60 days from sublease signing/consent
Availability

SPACE OVERVIEW

- Turn-key sublease opportunity proximate to Grand Central Terminal
- Financially strong Sublandlord
- Fully furnished & wired - office space and multi-purpose event space
- Amenity center located within the building on the 9th floor including lounge spaces, a yoga/fitness studio, a full-service pantry and bar, and an outdoor terrace.

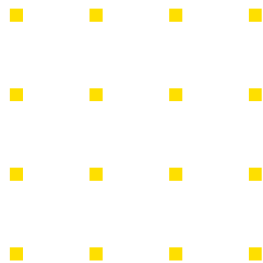
BUILDING AMENITY CENTER

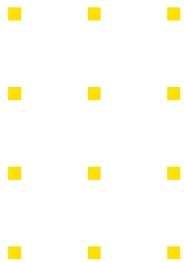




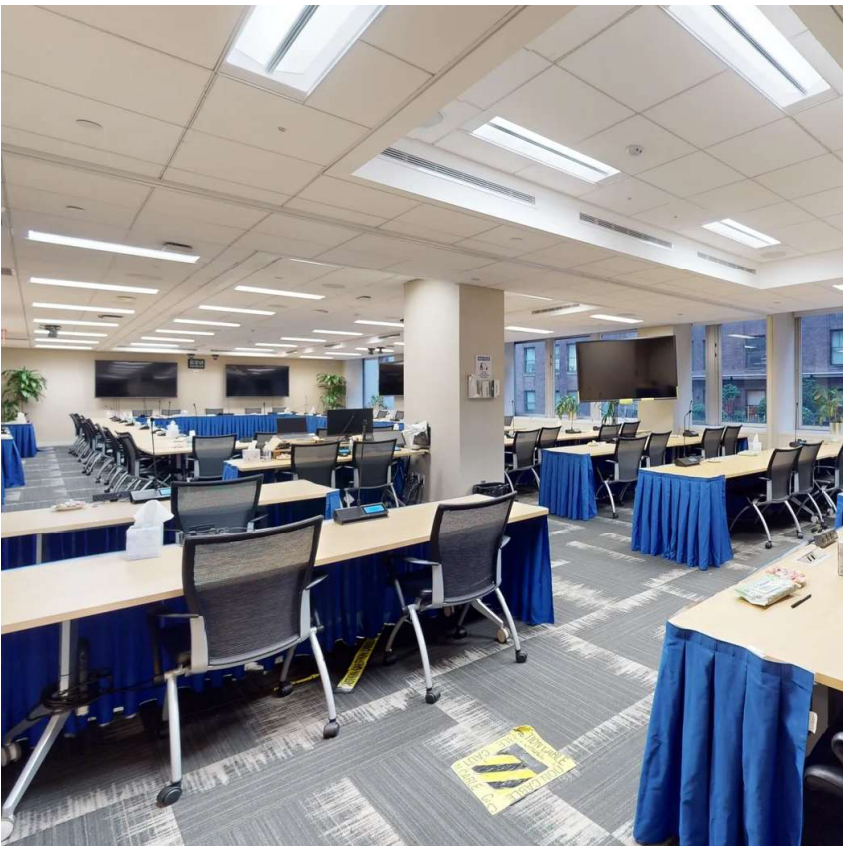
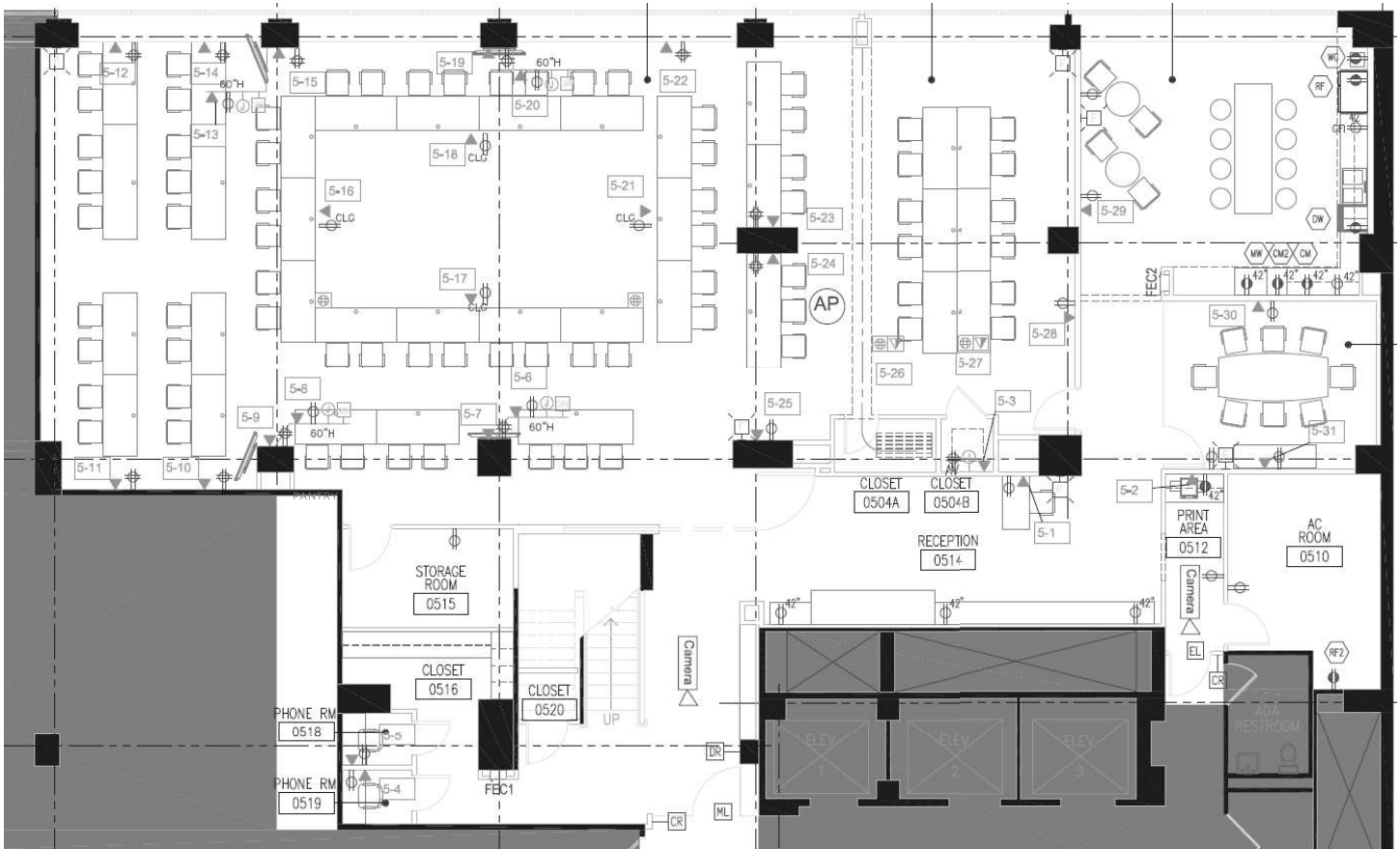
KEY HIGHLIGHTS

- 15 standard sized offices
- 1 executive sized office
- Open area with 64 workstations
- Three 6-8-person conference rooms
- One 12-person conference room
- One 20-person conference room
- 1 pantry
- 1 reception area





PARTIAL 5TH 7,041 SF



KEY HIGHLIGHTS

- Multi-purpose event space for 60+ people
 - Includes pantry and an additional 10-person conference room