



# 29 | W-38<sup>TH</sup> STREET

Move-In Ready

Full and Partial Floors

Newly Renovated Lobby

Located in the Transit Triangle

Steps to Bryant Park







Entire 15th Fl

7,150 rsf

Immediate Possession

- 2nd Gen space featuring a 12-person conference room, 8 windowed offices, large open bullpen
- Full wet pantry, private men's and women's restrooms, and ample storage
- 4-sides of windows provide great natural light and views, tenant-controlled A/C
- Landlord will refresh to match building standards

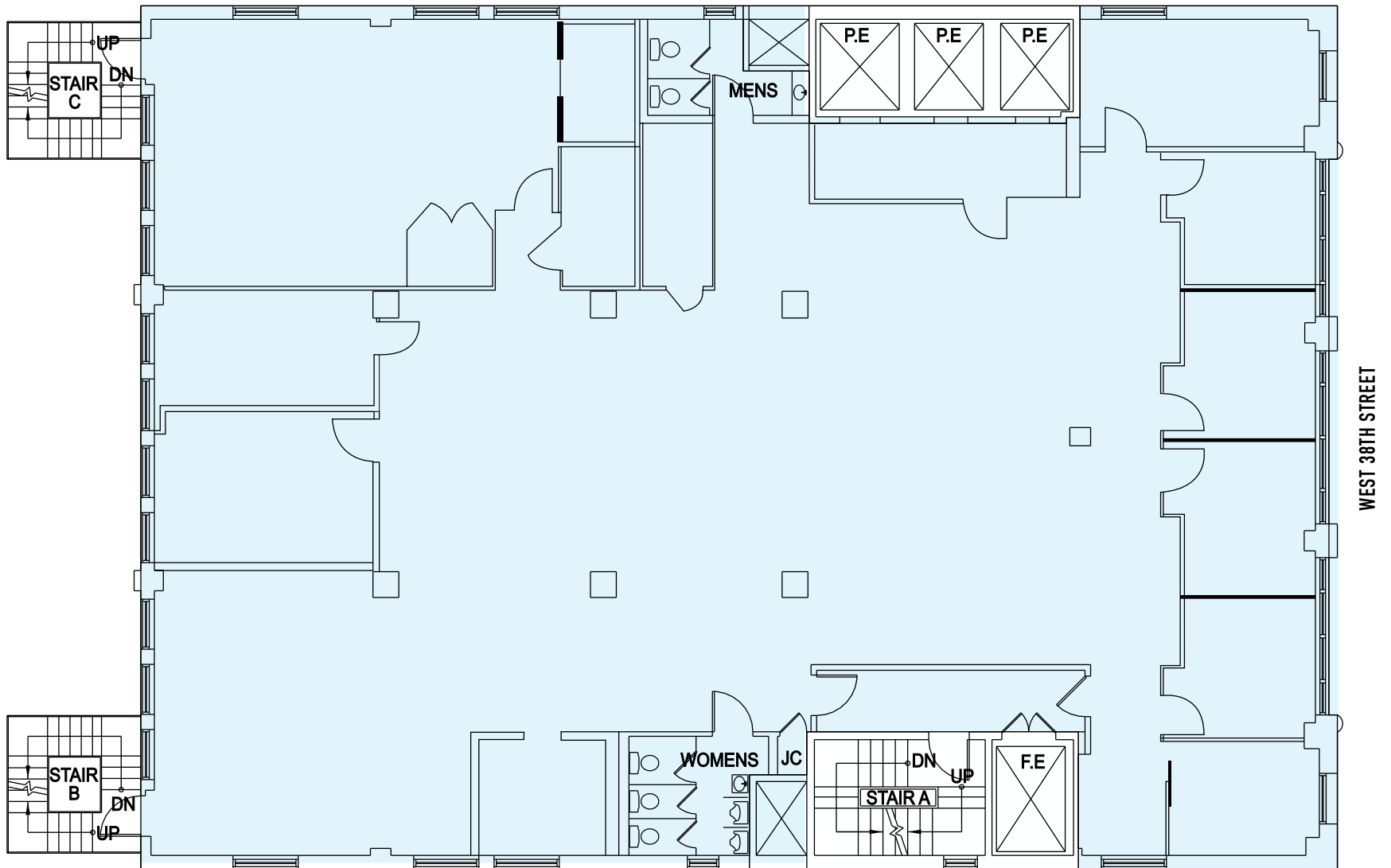
Comments

- Fully attended, newly renovated lobby, 24/7/365 keycard security access
- Oversized operable windows provide great natural light
- Expansion opportunities available

Walk to Bryant Park, Times Square,  
Herald Square, Madison Square Garden,  
and Transportation Hubs at Penn Station/  
Moynihan Train Hall and Grand Central  
Terminal, Access Subways



ENTIRE 15TH FLOOR - 7,150 RSF





**SAMPLE BUILDING STANDARD FINISHES**

# Walk, Bike, Drive, Ride + Live Work & Play

Centrally located in the Transportation Triangle, the surrounding upscale dining and hospitality options are perfect for entertaining clients.

29 West 38th, adjacent to Amazon's new headquarters, is the obvious choice for a convenient location where employees love to be.

