



Entire 2nd Floor - Conference Room

**29** | **W-38<sup>TH</sup>**  
**STREET**

Move-In Ready Full and Partial Floors  
Newly Renovated Lobby  
Located in The Transit Triangle



New Lobby With 24/7/365 Access

Entire 2nd Fl

7,153 rsf

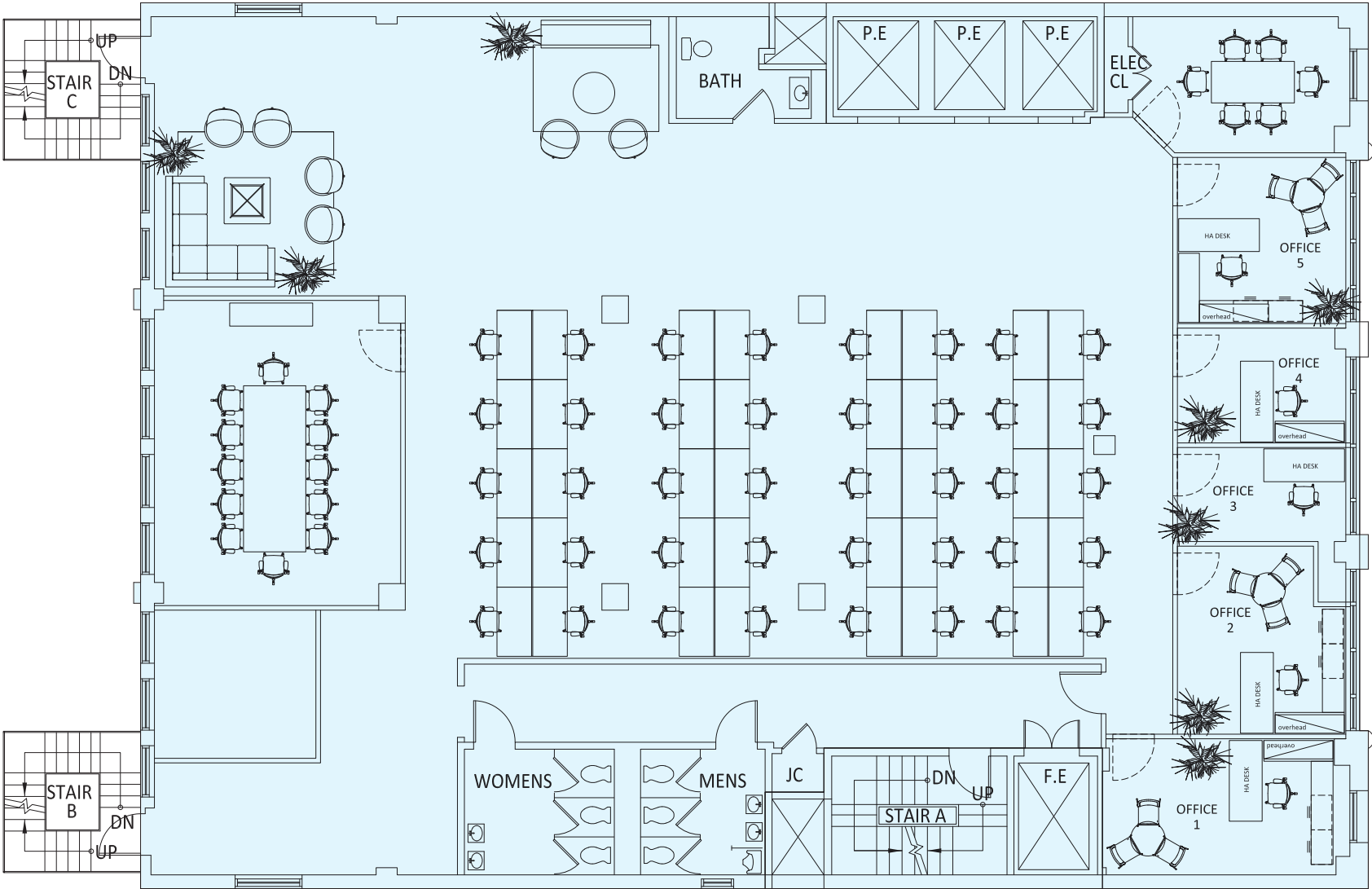
Immediate Possession

- Newly upgraded built space with (6) glass-front windowed offices and conference room, brand new wet pantry, new led lights
- Large open area allows for flexible layout options, refinished hardwood floors throughout, updated private men's and women's restrooms

Walk to Bryant Park, Times Square,  
Herald Square, Madison Square Garden,  
and Transportation Hubs at Penn Station/  
Moynihan Train Hall and Grand Central  
Terminal, Access Subways



ENTIRE 2ND FLOOR - 7,153 SF



WEST 38TH STREET



## ENTIRE 2ND FLOOR - 7,153 SF







## Walk, Bike, Drive, Ride + Live Work & Play

Centrally located in the Transportation Triangle, the surrounding upscale dining and hospitality options are perfect for entertaining clients.

29 West 38th, adjacent to Amazon's new headquarters, is the obvious choice for a convenient location where employees love to be.



## LOCATED WITHIN MIDTOWN'S TRANSIT TRIANGLE

**Port Authority  
Bus Terminal**  
12 Mins Walking

**Moynihhan  
Train Hall**

**Penn  
Station**  
11 Mins Walking

**Bryant Park**  
3 Mins Walking

29 West  
38th Street

amazon

**Grand  
Central  
Station**

10 Mins Walking

4 5 6 7 S

