

200 Park Avenue South

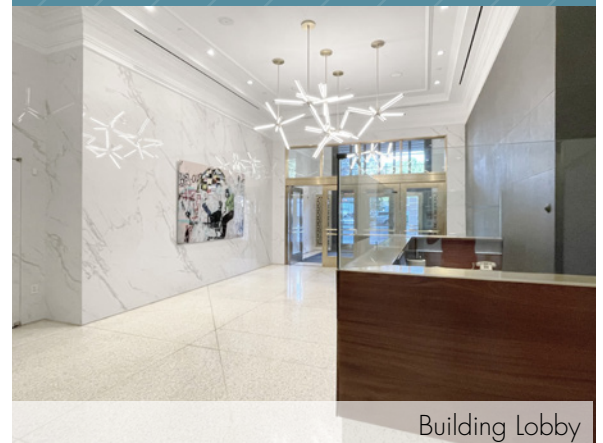
Northeast Corner of East 17th Street @ Union Square Park



**Built Office Suite
7,278 RSF**

**Mix of Private &
Open Work Areas**

**Fantastic
Union Square
Location and
Transportation Access**



Building Lobby



Union Square Transit Hub



Union Square Park Green Market

Anchoring Union Square Park, 200 Park Avenue South offers tenants a burgeoning submarket full of creative tenancy, direct connectivity to Union Square transit hub's multiple express and local trains, the farmers market, a wide variety on convenient eateries, fitness studios, and a myriad of other work/lifestyle benefits

Suite 501 - 7,278 RSF

Second Generation Installation Featuring:

12 ft. Ceiling Height • Tenant-Controlled A/C • Oversized Operable Windows
Unparalleled Transportation Options

Possession: January 1, 2026 or sooner

Rent: Call or email for details

(8) Glass-front Offices

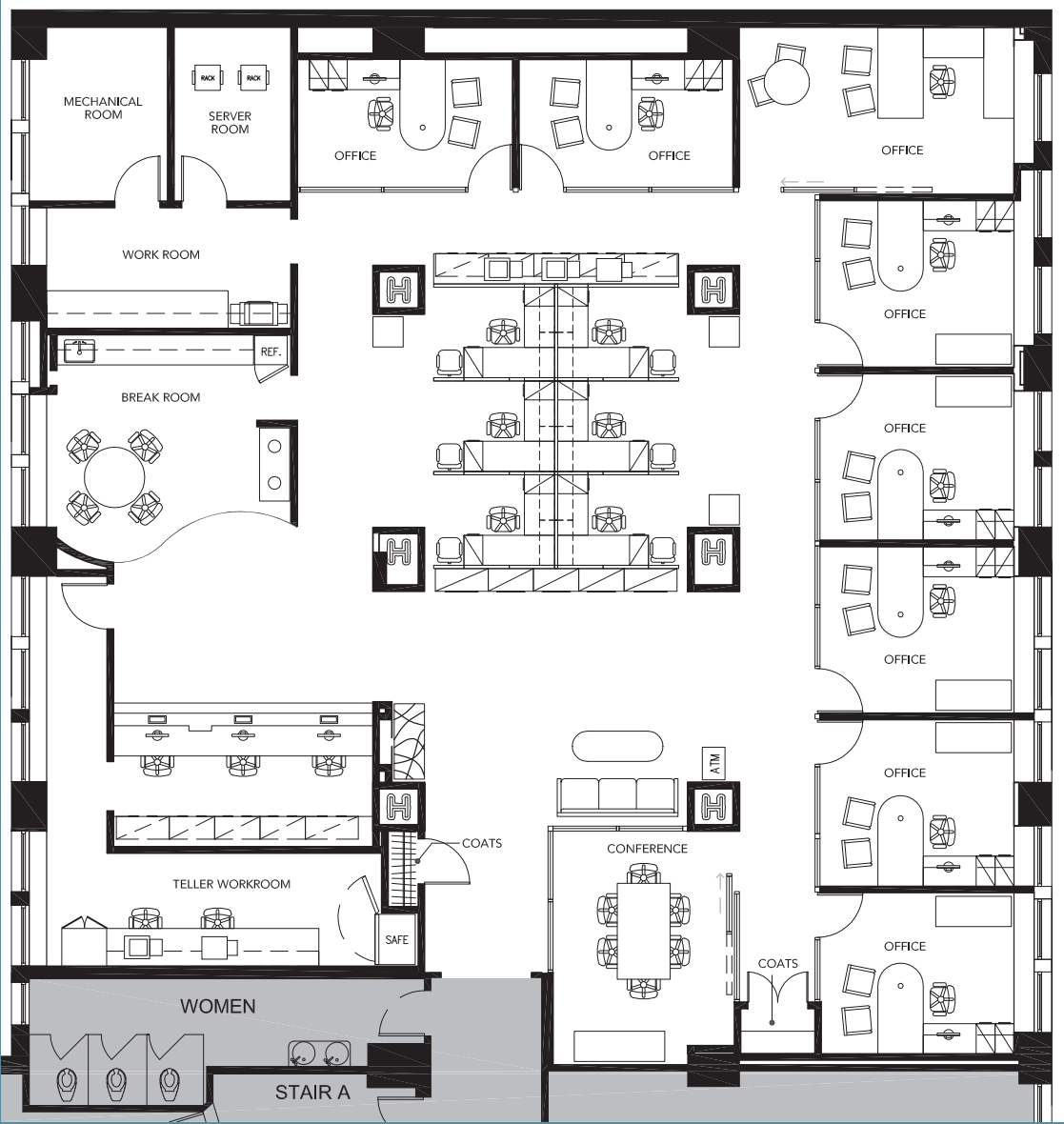
(1) Conference Room

Multi-Staff Room, Open Area

Wet Pantry with Seating Space

East and West Exposure - Good Natural Light

SUITE 501 - 7,278 RSF
(AS-BUILT PLAN)



PARK AVENUE SOUTH

Floor Plan not to scale, for display purposes only
Furniture shown for layout concept only

