

250 West 55th Street

SUBLEASE AVAILABILITY

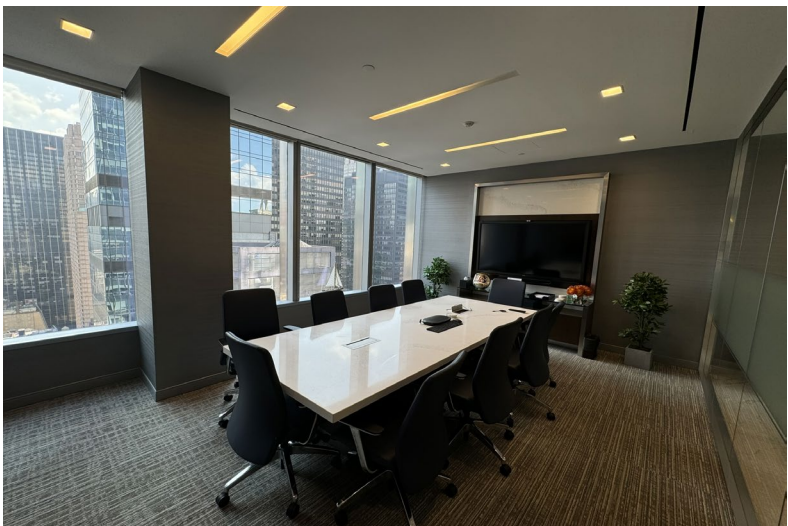
Partial 25th
Floor

7,499 SF
Size

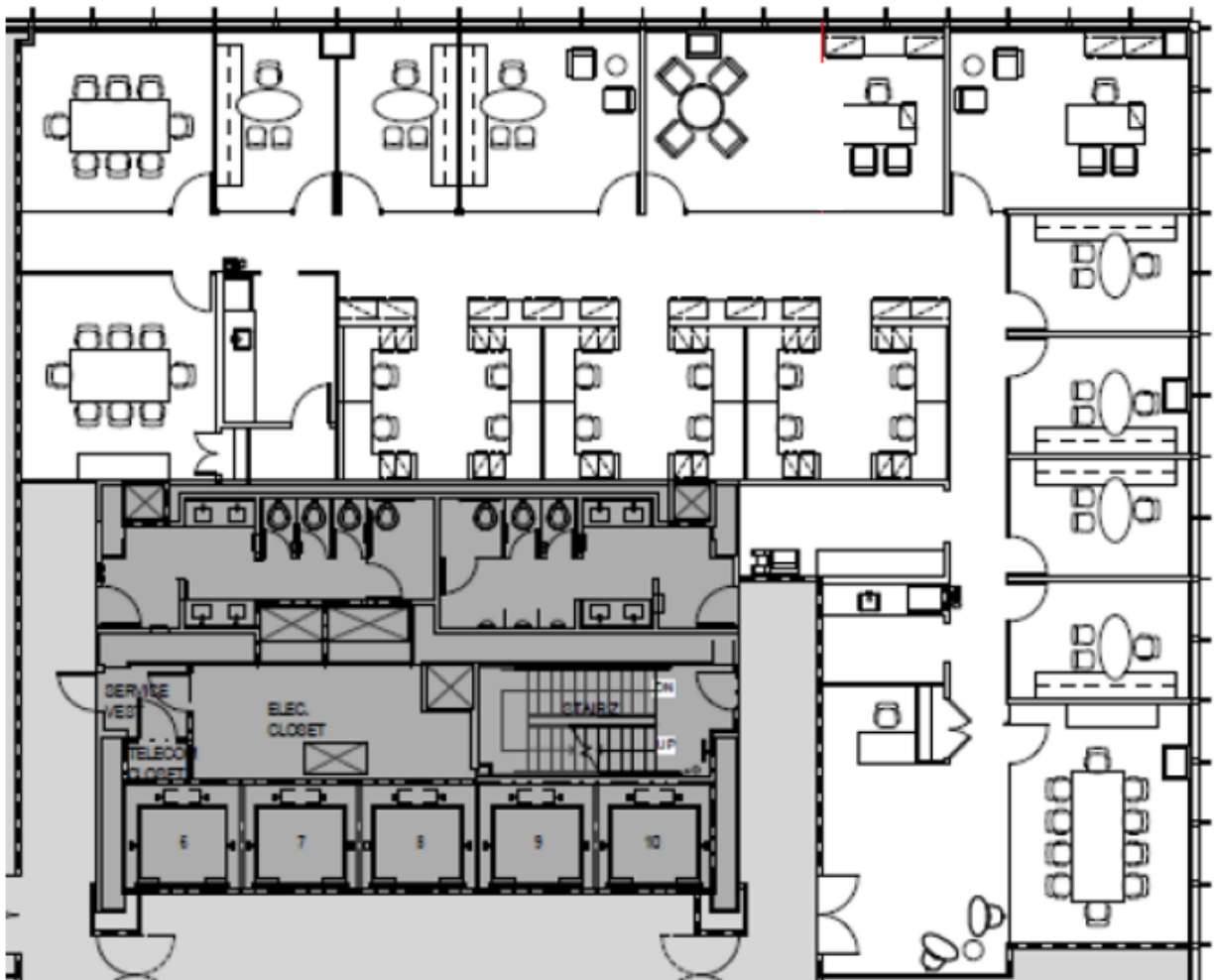
Through Sept 2025
Term

Immediate
Possession

- ❑ Short-term, plug and play opportunity in new construction
- ❑ High-end installation with a mixture of meeting rooms, offices and open area
- ❑ Features glass office fronts and cityscape views
- ❑ Column-free space with oversized windows and high ceilings



Partial 25th Floor | 7,499 RSF

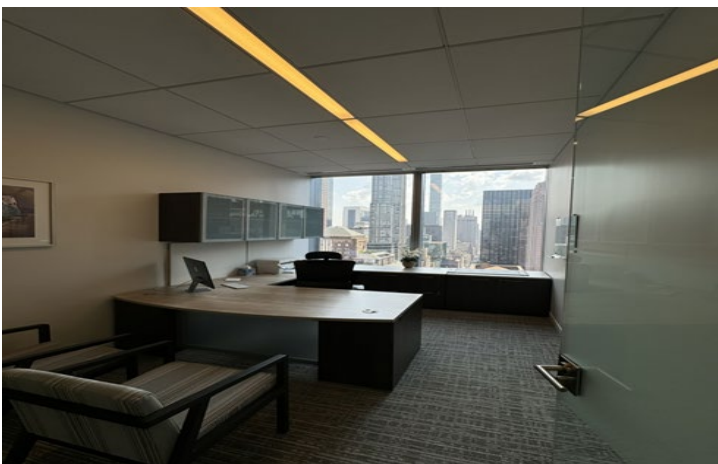


Layout

- One (1) Boardroom
- Two (2) Conference Rooms
- Two (2) Executive Office
- Seven (7) Offices
- **Eighteen (18) Workstations (floor plan incorrect)**
- Two (2) Pantries

250 West 55th Street

Space Photos



250 West 55th Street Sublease