

# Heart of the City

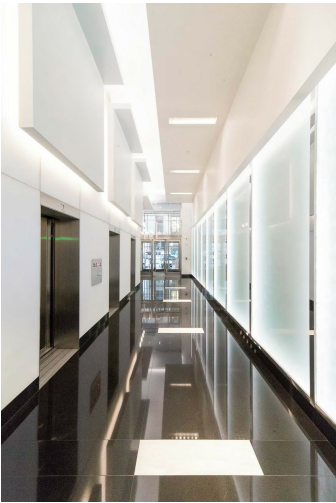
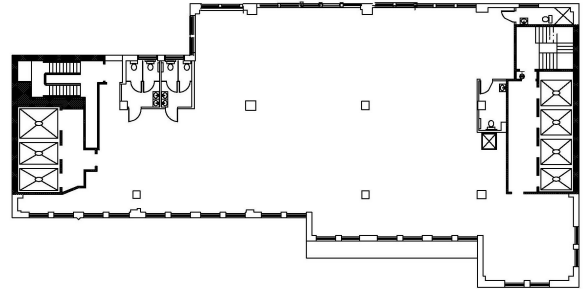
150 West 30th Street (between 6th and 7th Avenues)

## Entire 17th Floor



### Facts

- 8,000 rentable sq ft
- Entire floor lined with windows
- Terrific north and south light and views
- White box with polished concrete floors
- Landlord will build to suit



### About the Property

Gorgeous lobby and upgraded elevators  
24 hour/7day Lobby Attendant  
Full Staff  
6 elevators (4 passenger, 2 freight)  
Great Tenant Roster  
Just off Seventh Avenue, steps from Penn Station, close to Herald Square Subways and Path

### Terms

- Possession: Immediate
- Rent: Negotiable
- Landlord will modify/upgrade
- Electric submetered
- Tenant controlled air cooled a/c