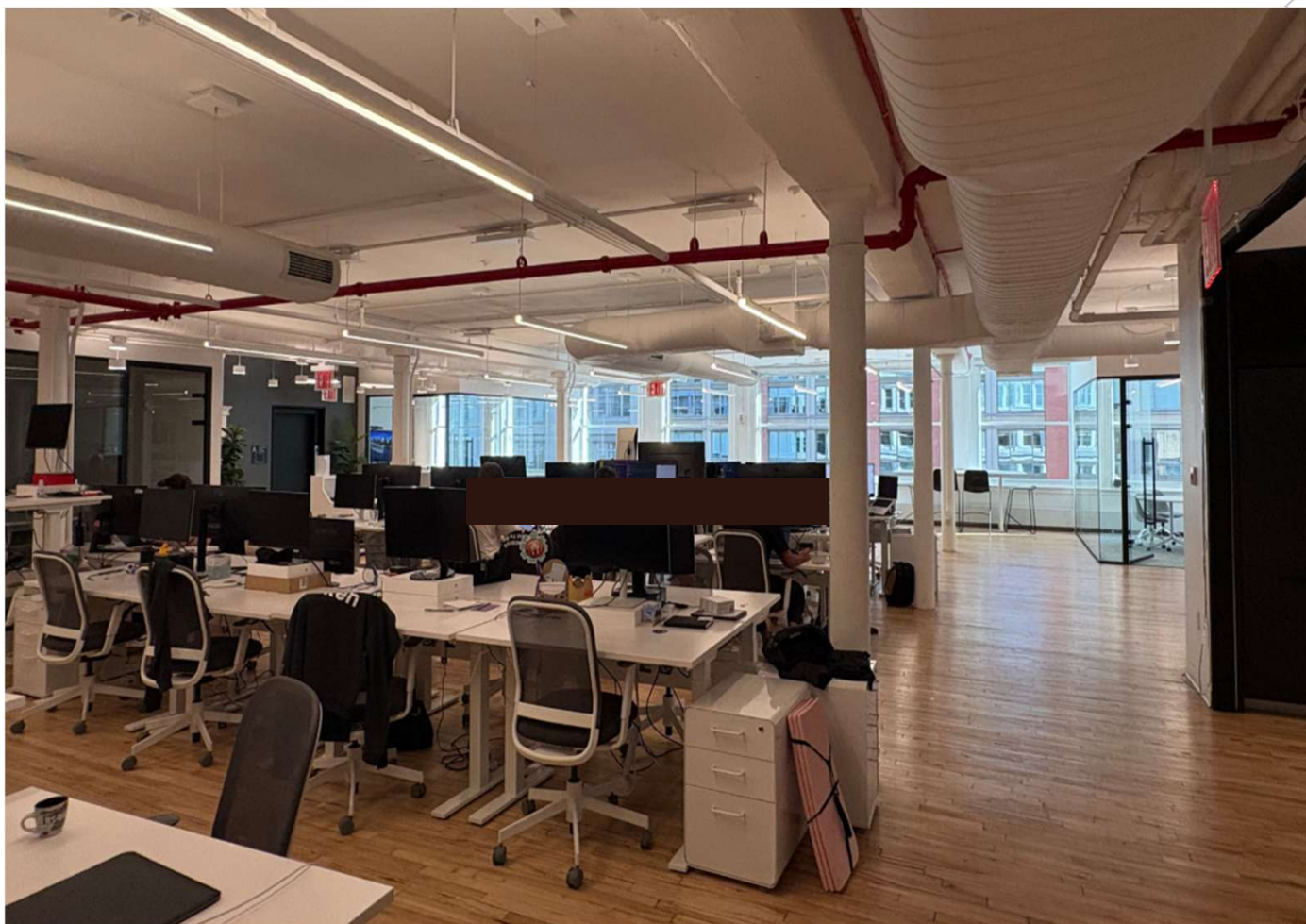


61 West 23rd STREET NEW YORK CITY, NY
8,367 RSF AVAILABLE

61 West 23rd Street



PLUG & PLAY SUBLEASE OPPORTUNITY



Fully furnished and wired creative space with hardwood floors and exposed ceilings



Located in the heart of Flatiron only half a block away from Madison Square Park



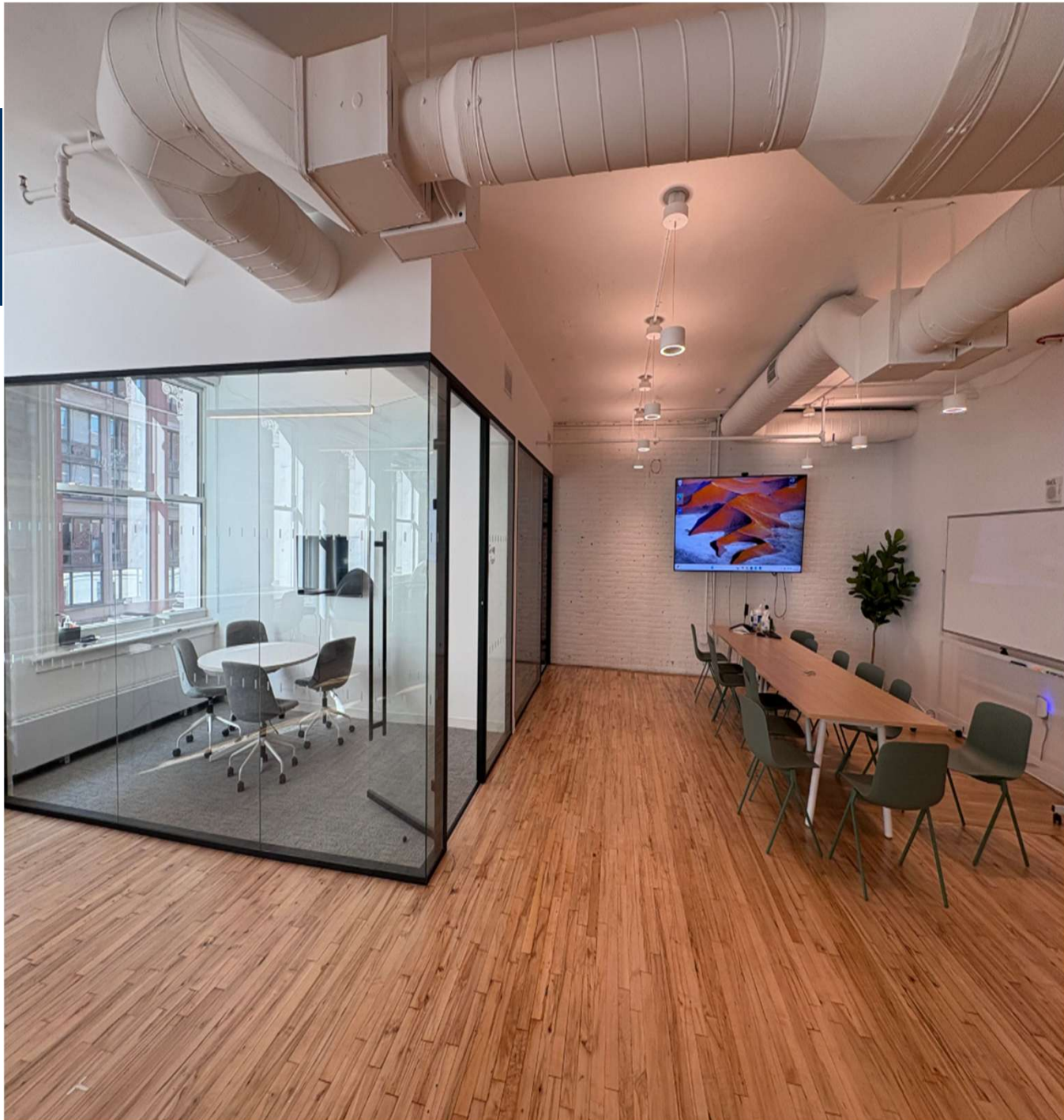
Unparalleled access to transportation with multiple subway lines within blocks PATH, F / M, R / W, 1, 6, & C / E Lines



Term Through July 2026



Possession: December 2025



Entire 5th Floor – 8,367 RSF

2

Conference Rooms

5

Breakout Rooms /
Offices

1

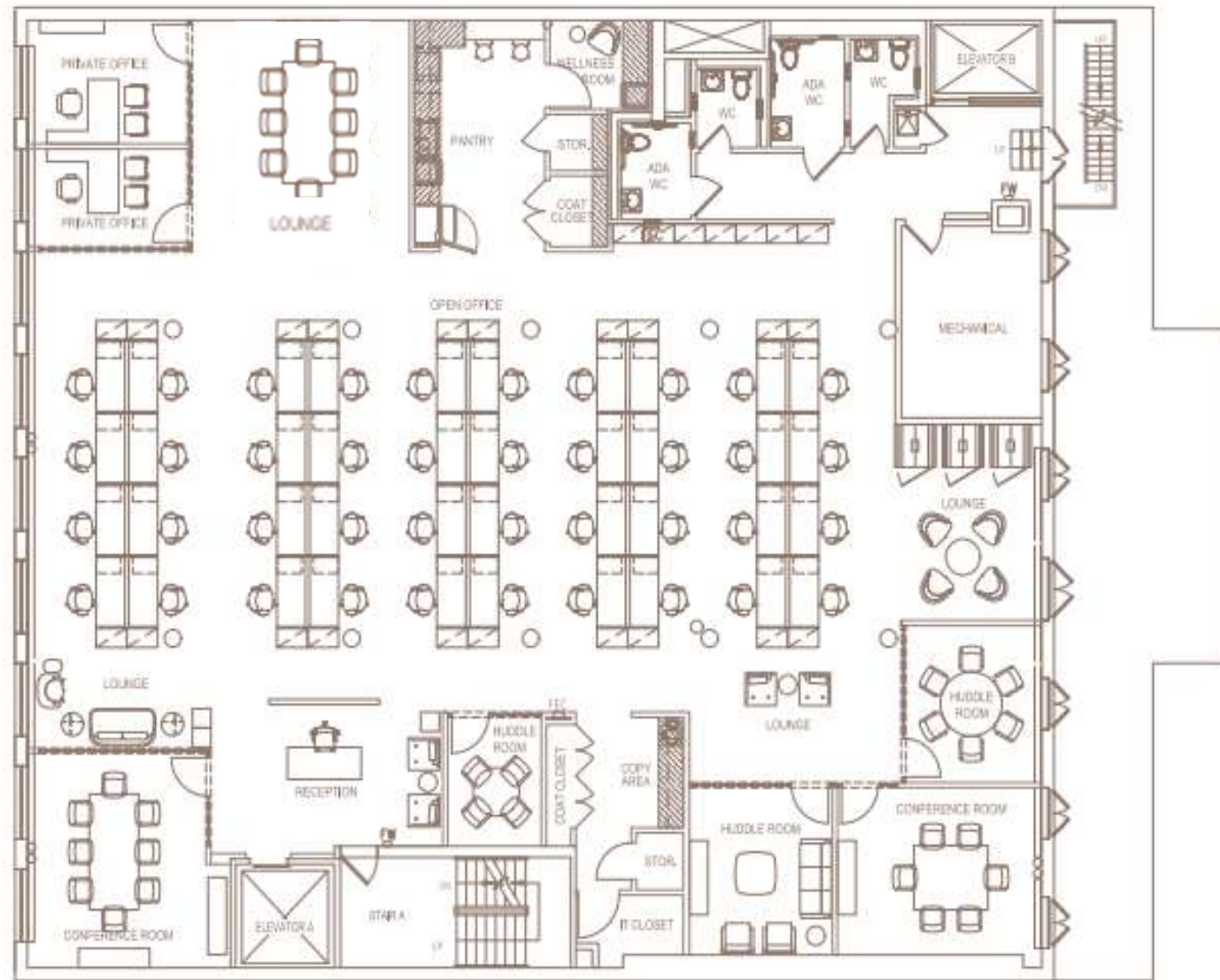
Kitchen / Pantry
areas

50

Workstations

6

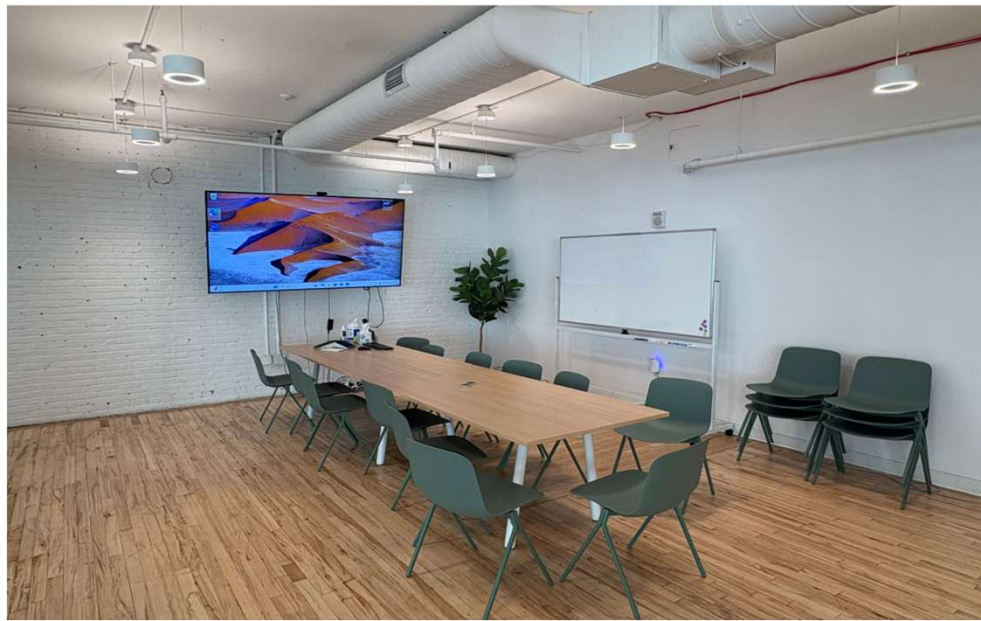
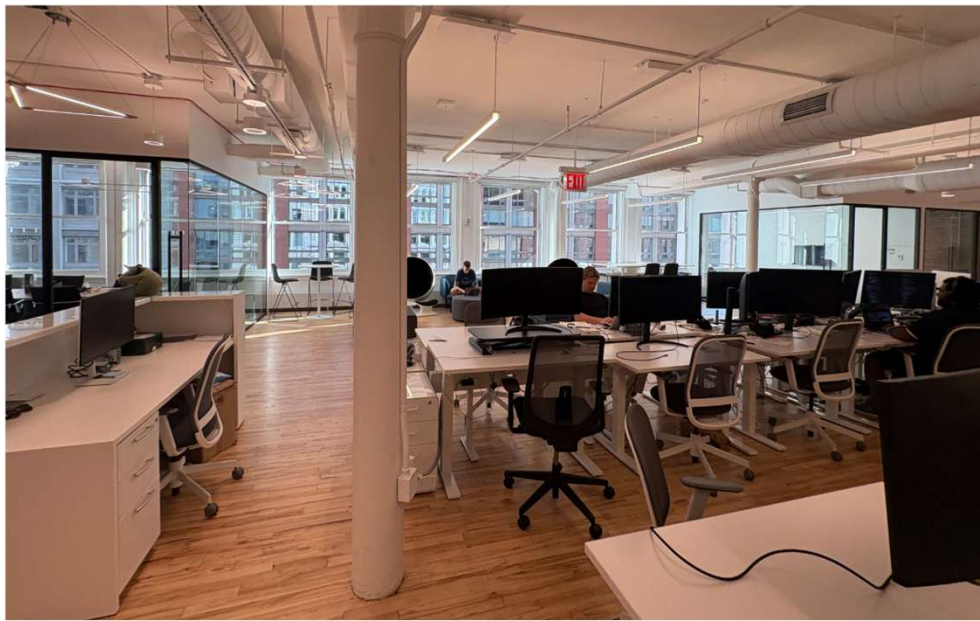
Phone Booths



Term Through
July 2026

*Exact furniture layout is slightly altered but desk count is accurate

61 West 23rd Street



61 West 23rd Street

