



ONE HIGH LINE

· OFFICES ·

5-story newly constructed
boutique office asset

14' high ceilings, minimal columns,
and a floor-to-ceiling window line

Situated in the Heart of the Meatpacking
District and directly adjacent to The High Line



Availabilities

FLOOR	RSF	OCCUPANCY	NOTES
ENTIRE 5	8,620	IMMEDIATE	ACCESS TO PRIVATE ROOF TERRACE
ENTIRE 4	9,155	IMMEDIATE	FEATURES A UNIQUE DOUBLE-HEIGHT AREA WITH A 20’ HIGH GLASS CURTAIN WALL, CREATING A SPECIAL TOWN HALL/PRESENTATION SPACE
ENTIRE 3	12,459	IMMEDIATE	INCLUDES A DOUBLE-HEIGHT EXTENSION WITH 22’ CEILINGS
ENTIRE 2	9,056	IMMEDIATE	HIGH CEILINGS, MINIMAL COLUMNS, FLOOR TO CEILING WINDOWS, OFFERING A BRIGHT AND OPEN WORKSPACE
ENTIRE 1	7,254	IMMEDIATE	IDEAL MEETING OR EVENT SPACE WITH HIGH CEILINGS & ACCESS OFF THE MAIN LOBBY

Amenities

EXCLUSIVE RATES AND SERVICES AT **FAENA NEW YORK** & MIAMI BEACH, INCLUDING THE FITNESS CENTER, SPA, MICHELIN-RATED DINING, CONCIERGE, AND CURATED FAENA ROSE MEMBERSHIP ACCESS FOR SELECT TENANTS.



Offices

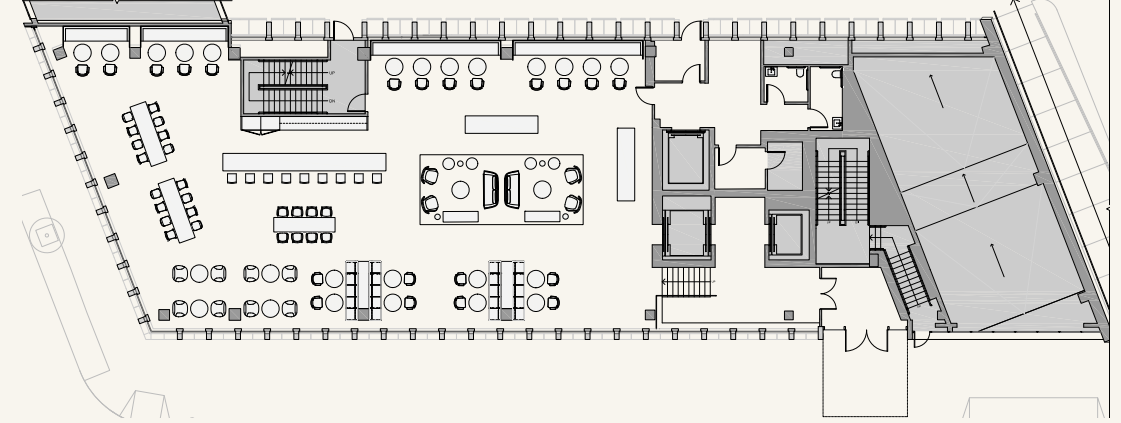
Floors range from 8,600 SF to 12,000 SF with average ceiling heights of 14 feet. Expansive floor-to-ceiling windows with expansive western facing views overlooking the Hudson River.



FLOOR PLAN

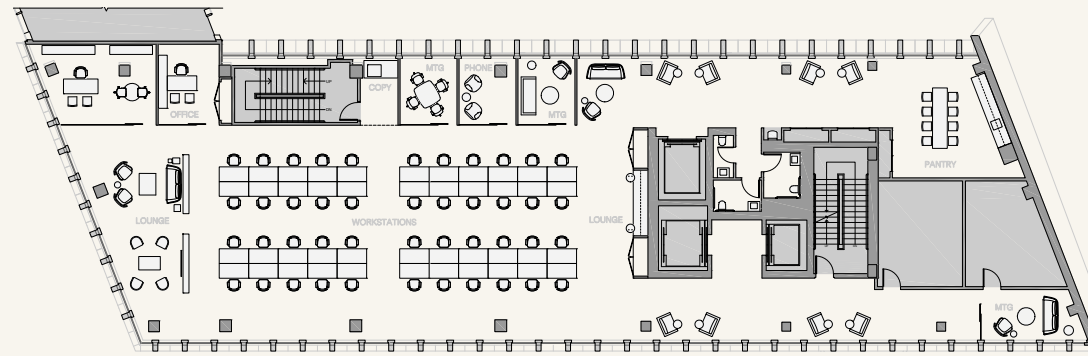
1st Floor 7,254 RSF

A bright and sophisticated meeting and event space available for lease, featuring high-end materials and a contemporary design, off the main lobby.

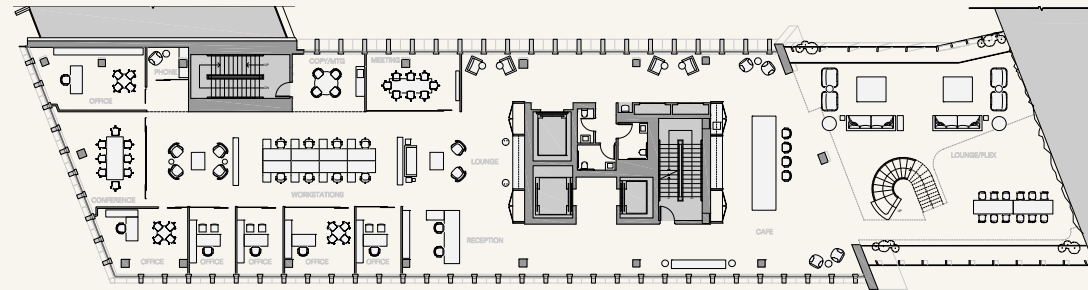


FLOOR PLANS

2nd Floor
9,056 RSF



3rd Floor
12,459 RSF

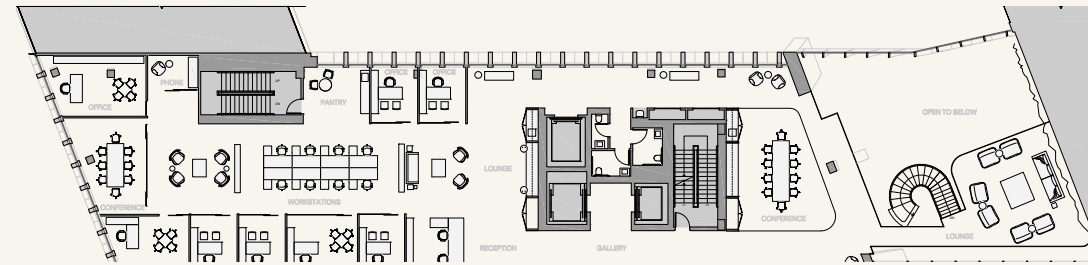


The third floor bridge provides a dramatic, light-filled gather space with a show-stopping 22-foot-high ceiling and an expressive, torqued glass façade – ideal for internal meetings and for guests.

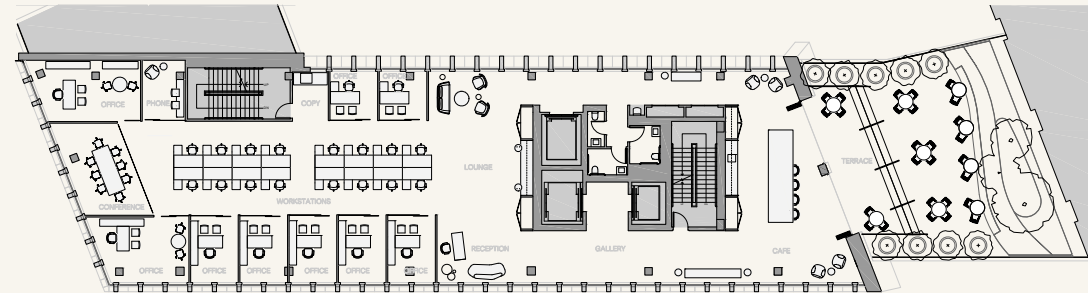


FLOOR PLANS

4th Floor
9,155 RSF



5th Floor
9,155 RSF



On top of the fifth floor, a private terrace offers a lifestyle-driven extension of your workspace. Seamless indoor-outdoor access, complete with covered entry via accordion glass wall system



Location

Situated in the heart of the Meatpacking submarket, One High Line's surrounding neighborhood is the definition of Lifestyle. Adjacent to the site is direct access to Highline Park, which stretches from the heart of Meatpacking to Hudson Yards. World class food can be found on both sides of the Building with Chelsea Market to our east and the newly opened Pier 57 Food Hall to our west. Hudson River Park along with Little Island rounds out the Building's surroundings.

