

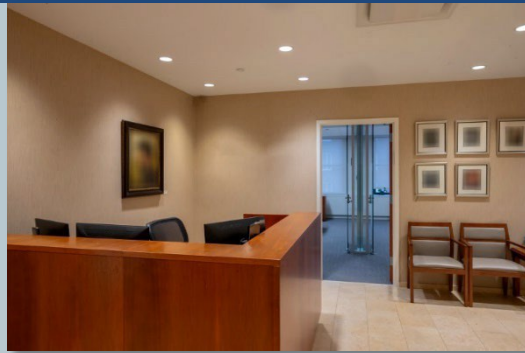
501 MADISON AVENUE

Sublease Through: 11/30/31

Northeast Corner of 52nd
Street and Madison Avenue



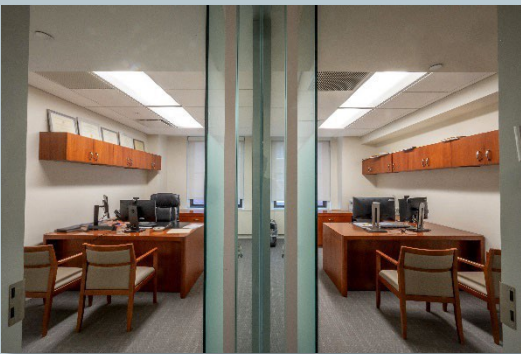
501 MADISON AVENUE



NINTH FLOOR OVERVIEW

8,938 RSF

- Twelve perimeter offices with 11 interior support stations
- One 26-seat perimeter conference room with 24 additional perimeter seats
- One six-seat perimeter conference room, six-seat interior conference room, pantry, reception, copy room, men's and women's bathrooms *Note: Existing installation slightly different than floor plans*



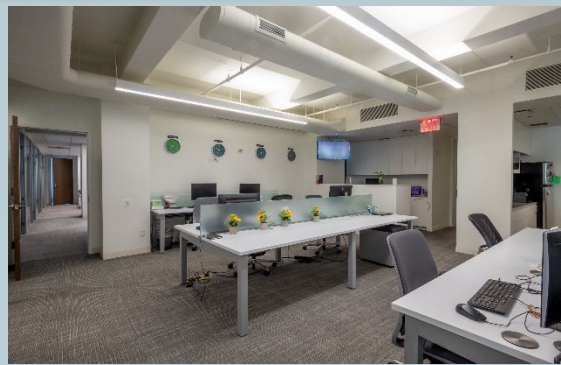
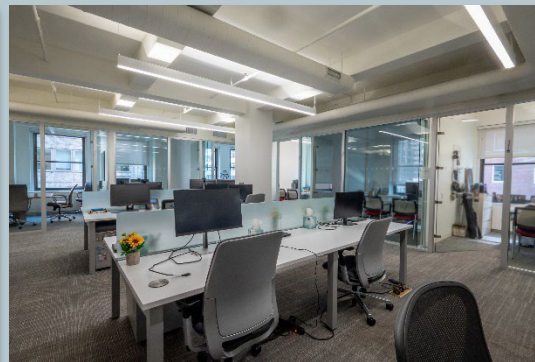
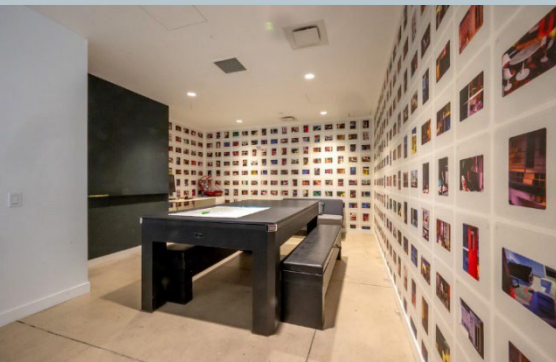
501 MADISON AVENUE



TWELFTH FLOOR OVERVIEW

8,938 RSF

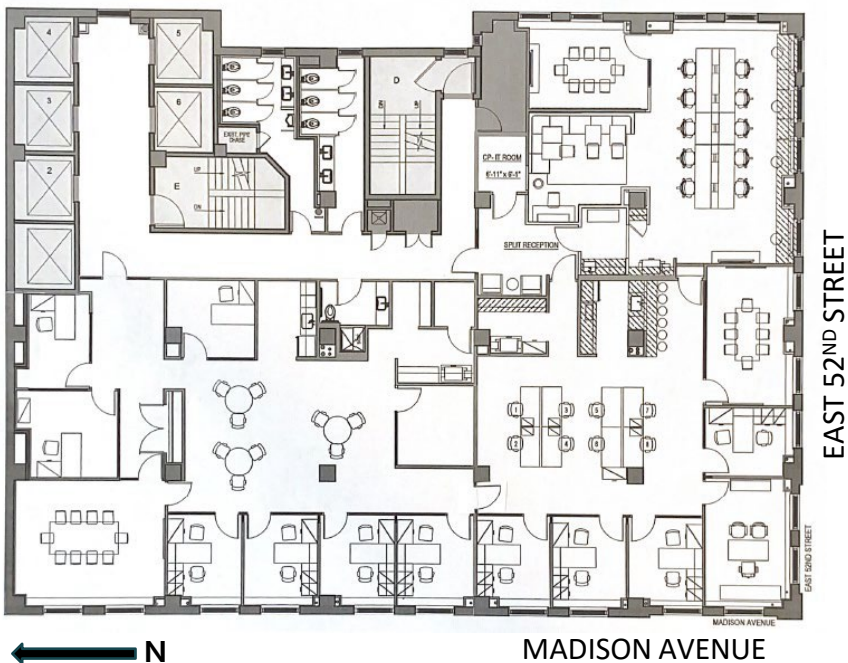
- Eight perimeter offices, two interior offices, one ten-person conference room, one eight-person conference room, two six-person conference rooms, one 20-person conference room, one open area with 10 desk positions
- One open area with four tables and seating for 12, one lounge room with pool table
- One ADA bathroom, men's and women's bathrooms, and reception *Note: Existing installation slightly different than floor plans*



501 MADISON AVENUE



9th Floor



12th Floor

TRANSPORTATION

- E, M trains on 53rd Street between Madison and Fifth Avenues
- 6 train at 51st Street and Lexington Avenue
- Grand Central North Entrance (Metro North and LIRR) at 48th Street and Madison Avenue

