

## 333 West 39<sup>th</sup> Street, Suite 800

### Pre-Built space, 825 RSF- Move-In Condition

As exclusive agents, we are pleased to offer the following space for lease:

#### Suite 800 (see attached floor plan)

**Area:** 825 RSF

**Reduced Rental Rate:** ~~\$46.00~~ **\$39.00 per RSF**

**Possession:** Immediate

**Term:** 3–5–7 Years

**Description:** Move-in condition. Pre-built, plug & play. One glass-fronted windowed office. Finished open area with 4 workstations and pantry. **Fully furnished.**

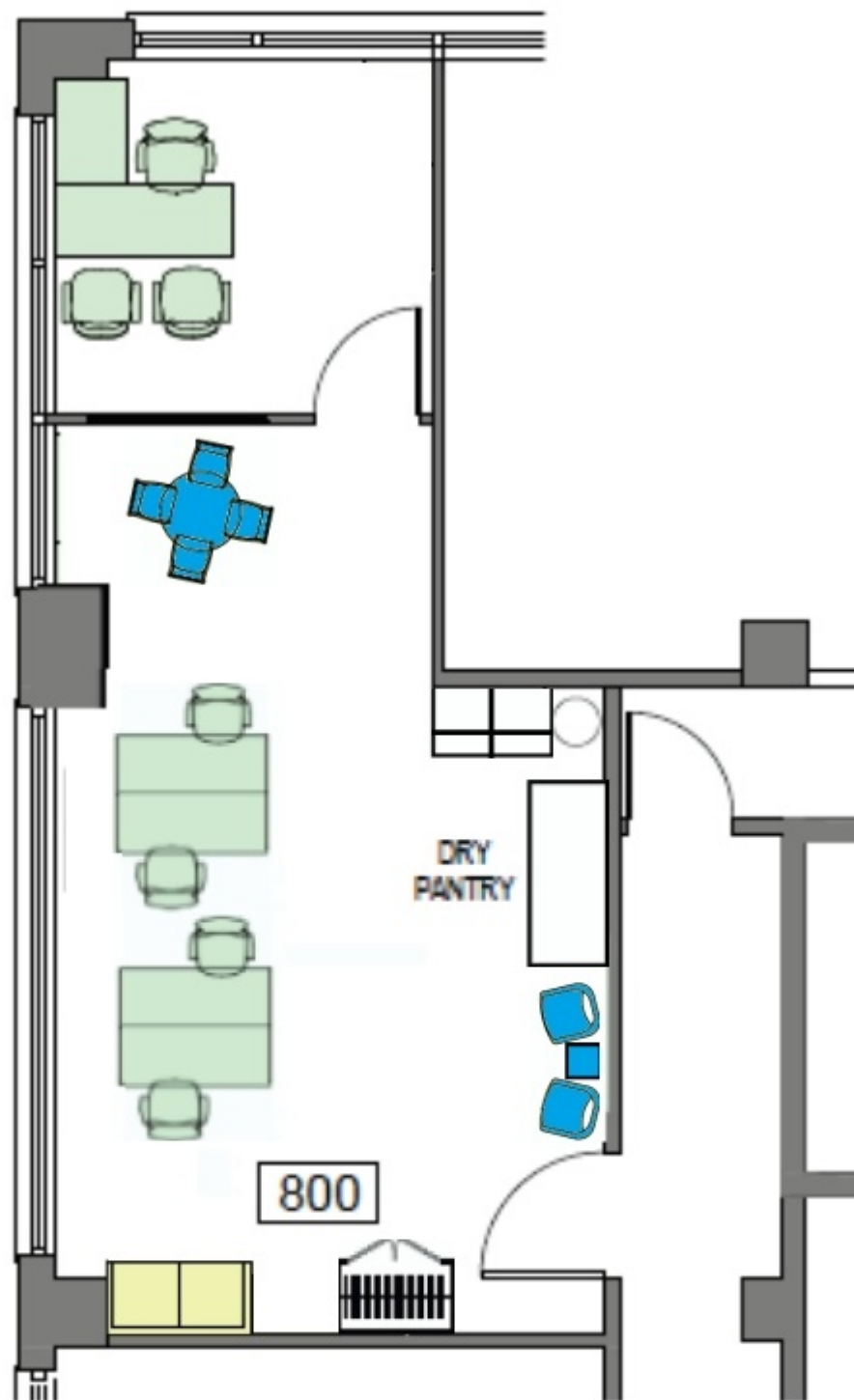
**COMMENTS:** Perfect for media, technology, any administrative use, design, sales, etc.

#### SPACE FEATURES:

- ◆ High open ceilings
- ◆ Polished concrete floors in open area and black stallion carpet in the office
- ◆ Tenant-controlled central A/C
- ◆ Large windows with solar shade window treatments
- ◆ Sub-metered electric
- ◆ Verizon FIOS, Spectrum Fiber, Pilot Fiber, and Century Link Fiber: Fully pre-wired w/CAT 6 high-speed Internet, tele & data

#### BUILDING FEATURES:

- ◆ Restored Art Deco lobby, attended 7 days a week
- ◆ 2 state-of-the-art modernized passenger elevators
- ◆ 24-hour / 7-day access
- ◆ Close to all public transportation including Penn Station and Port Authority, Lincoln Tunnel, West Side Highway, Shuttle to Grand Central, and A-C-E-N-Q-R-W-1-2-3-7 Subway lines



KEY PLAN

8TH FLOOR - SUITE 800  
333 WEST 39TH STREET