

PRIME SUBLEASE OPPORTUNITY

675 THIRD AVENUE



ENTIRE 4TH FLOOR 9,162 RSF



SPACE HIGHLIGHTS

- 1 Conference room
- 4 Private offices
- 3 Meeting rooms
- 1 Phone room
- Open area for 82
- Open Pantry

BUILDING HIGHLIGHTS

- Located one block from Grand Central Terminal along Midtown's highly desirable Third Avenue commercial corridor
- Sweeping city and river views through newly replaced energy-efficient windows
- Recent capital improvements include a landscaped entry plaza with zinc-green wall, renovated lobby, and redesigned elevator cabs



ENTIRE 4TH FLOOR



TERM
Flexible

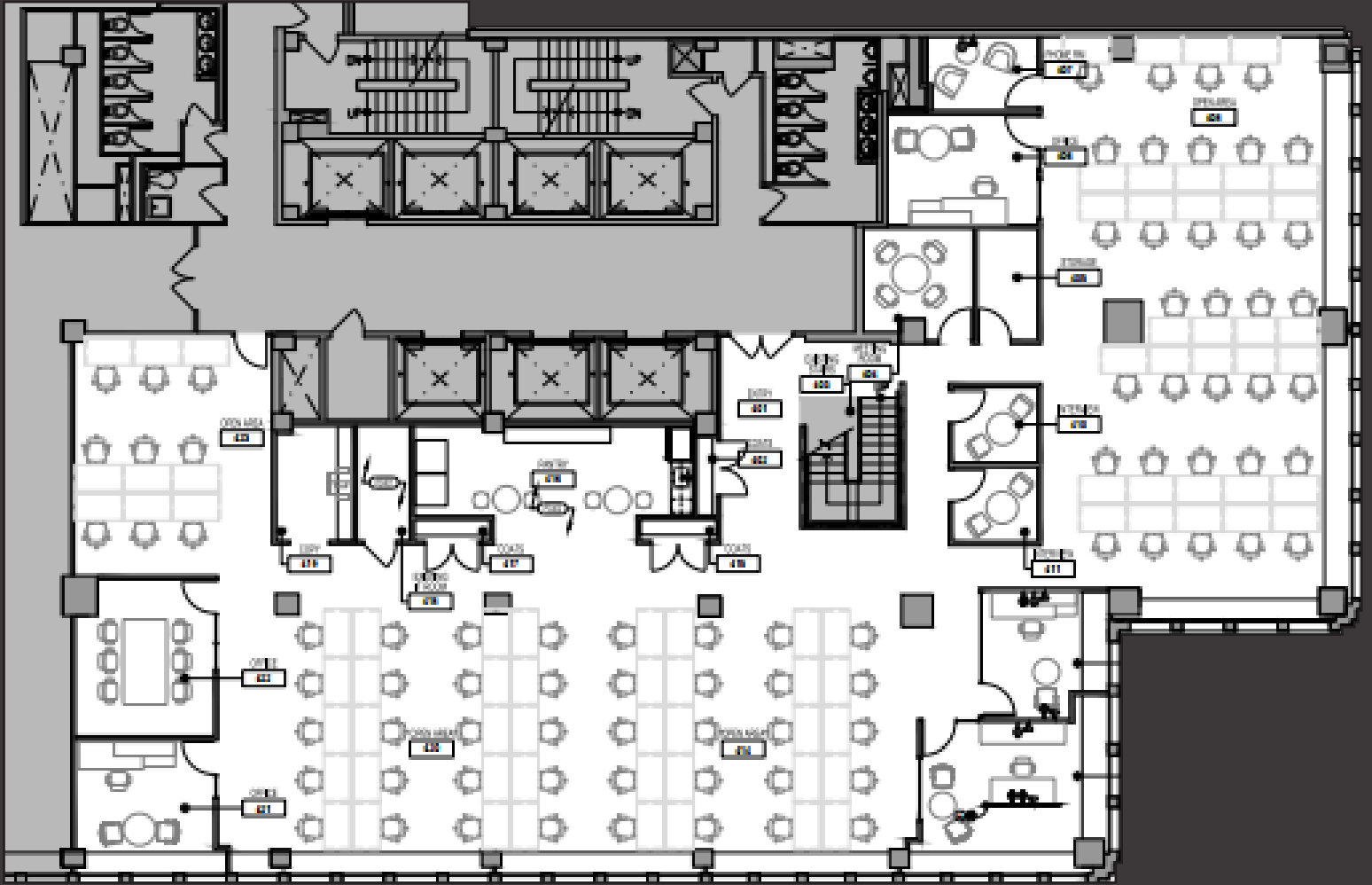


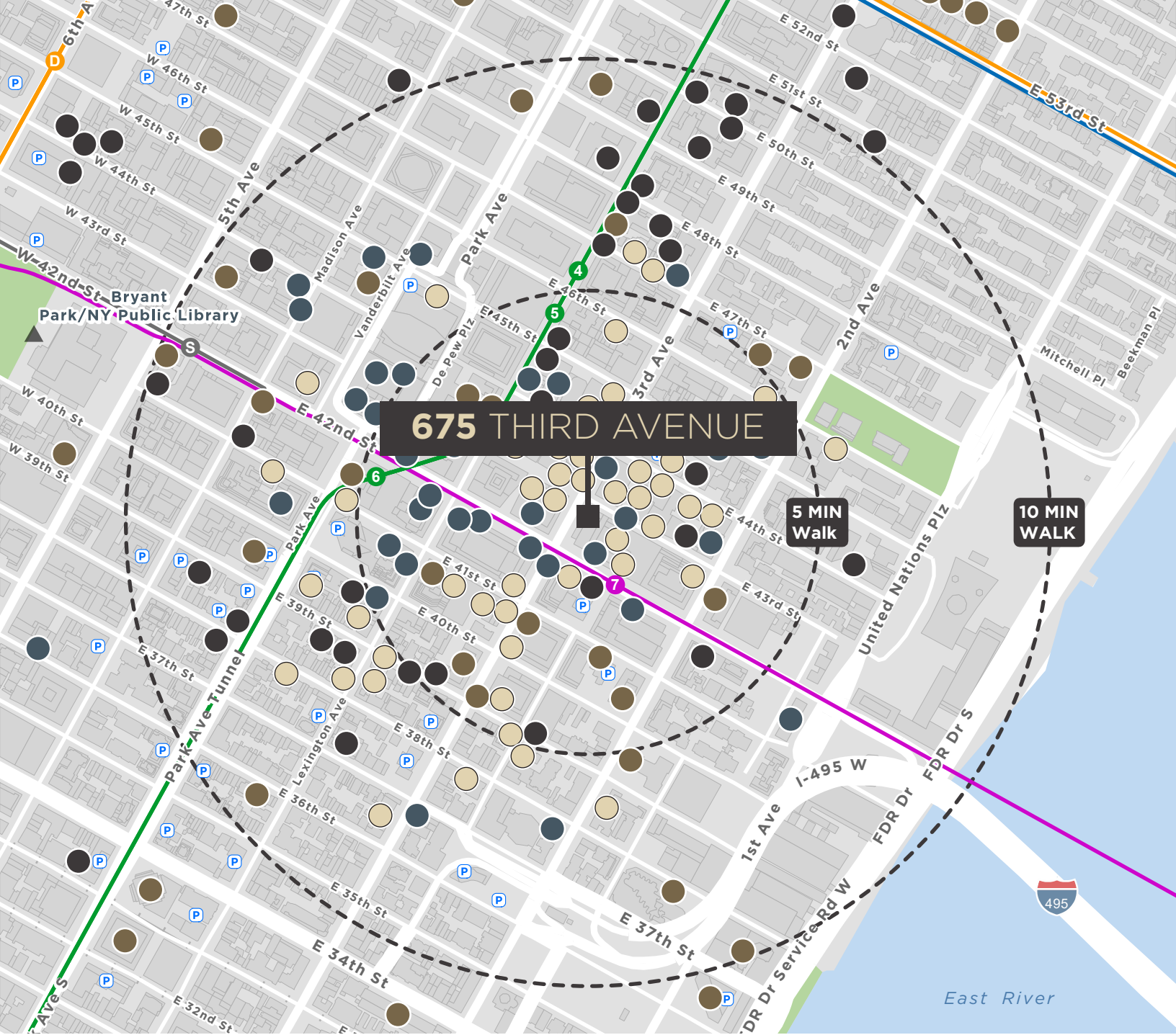
POSSESSION
60-90 Days



ASKING RENT
Upon Request

9,162 RSF





675 THIRD AVENUE

5 MIN Walk

10 MIN WALK

-  **50+**
RESTAURANTS
-  **43+**
HOTELS
-  **42+**
RETAIL
-  **40+**
FITNESS/GYMS