

565

F I F T H

BUILT SPACES



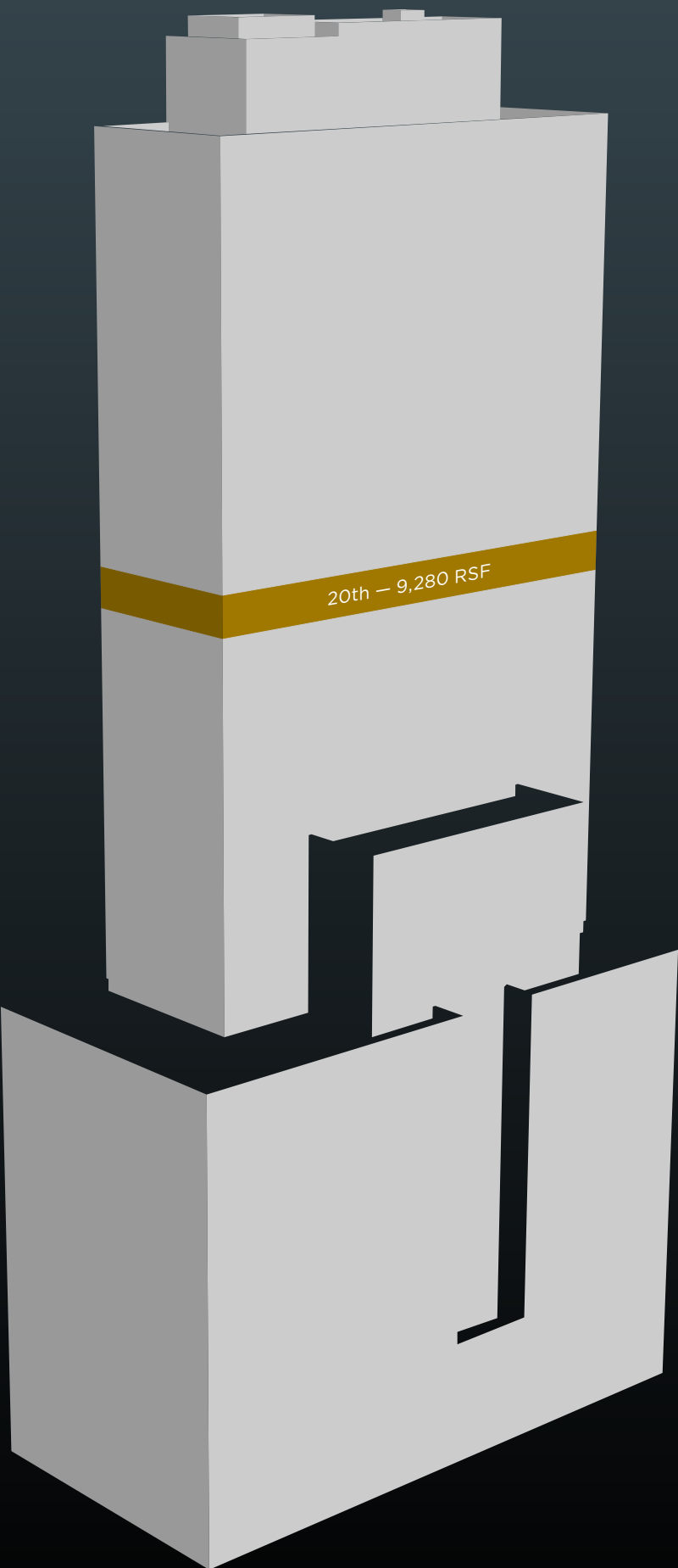


# THE GRAND ENTRANCE

## MAKE A STATEMENT

Located midway between Grand Central Terminal and Rockefeller Center, **565 Fifth Avenue** is an architectural icon, designed by **Emery Roth & Sons** in collaboration with **Norman Jaffe**. Its graduated glass façade rises 30 stories above one of Manhattan's most prestigious blocks, revealing expansive views of Fifth Avenue and Midtown. A 24-foot high lobby with ornate stainless steel detailing and Italian marble walls provides an impressive transition into the building's spacious upper floors.





# AVAILABILITIES

FLOOR	RSF	POSSESSION	COMMENTS
20th	9,280	5/2024	Existing office-intensive installation built with 10 offices, 2 conference rooms, and open space.





16th Floor Photos





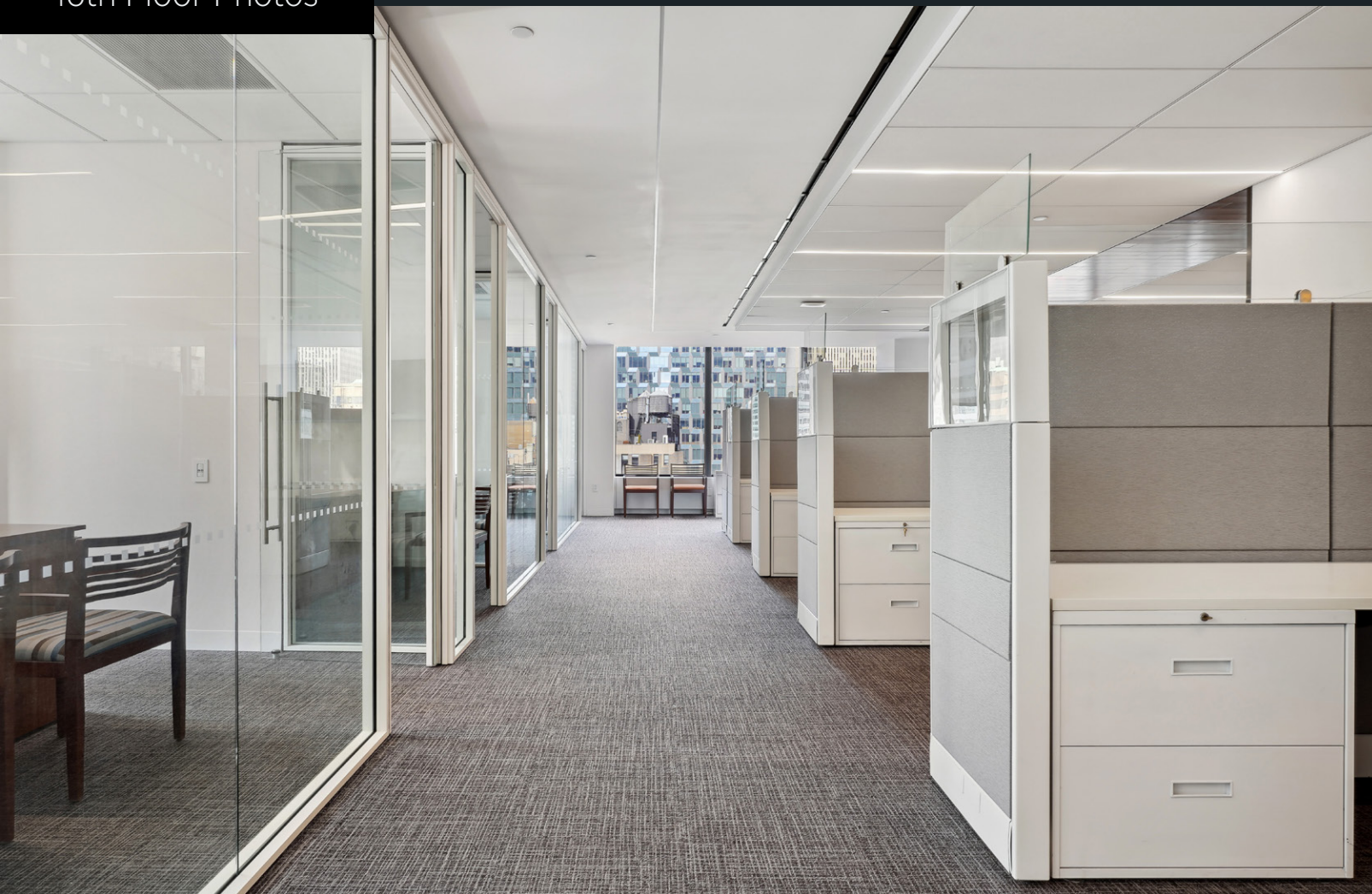


15th Floor Terrace





16th Floor Photos







5th Floor Photos

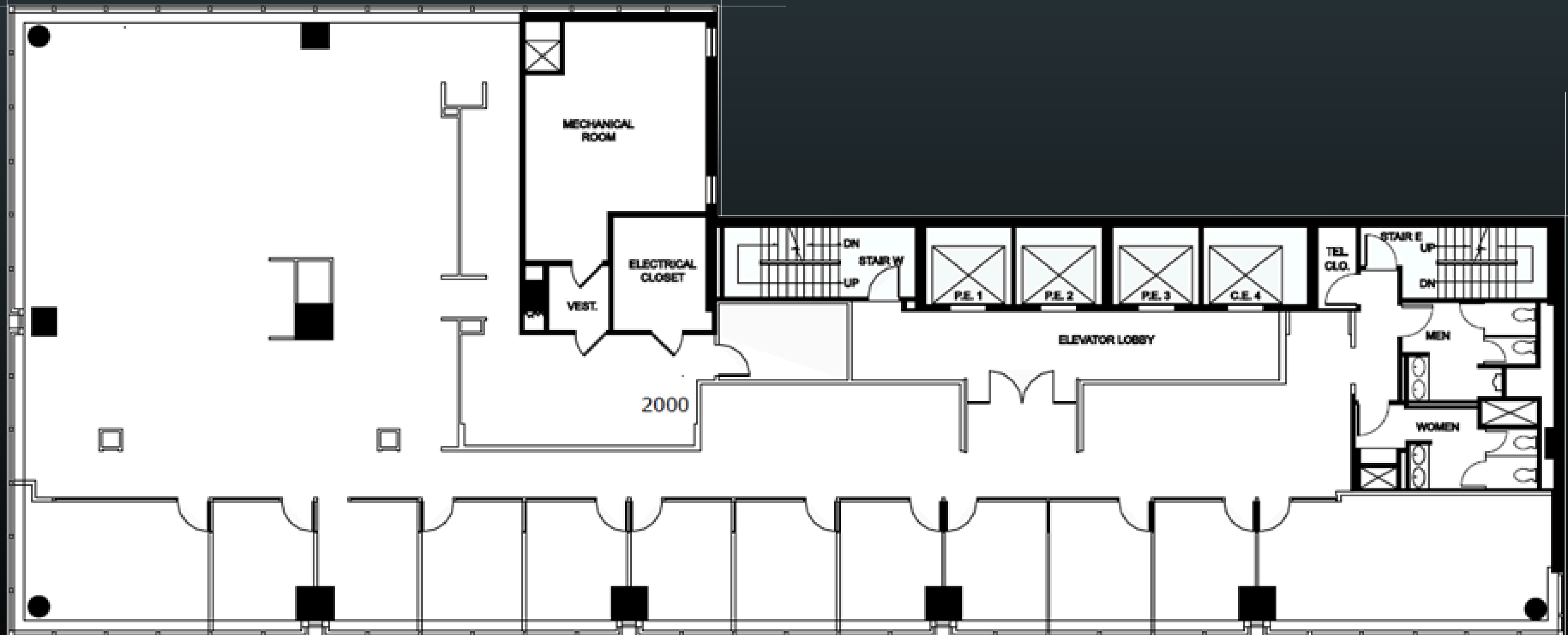




# 20th FLOOR

9,280 RSF

FIFTH AVENUE



EAST 46th STREET



# AMAZING ACCESS

## A CONVENIENT COMMUTE FROM ALL LOCATIONS

With its prime location between Grand Central Station & Rockefeller Center, **565 Fifth Avenue** enjoys unparalleled access to New York City's vast public transit network. Here, commuters and visitors can catch the 4, 5, 6, 7, B, D, F, M, and S, as well as the new LIRR lines that now run service to and from the new **Grand Central Madison** terminal. Several other subway lines are easily accessed via nearby **Times Square** and **Penn Station**.

The building's extreme proximity to these major transit hubs provides a distinct advantage in connectivity and commute time savings.

