

# 30 IRVING PLACE

*S/E/C of East 16<sup>th</sup> Street*

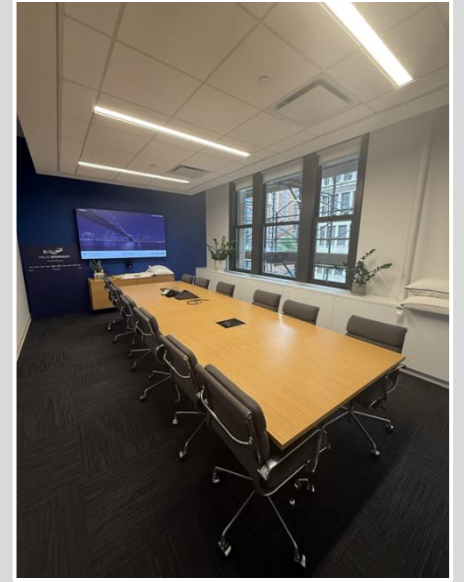
## SUBLEASE

### SPACE HIGHLIGHTS

- Natural light from large perimeter windows with unobstructed southeast exposure
- Creative layout with (4) perimeter offices, (3) conference rooms, and (57) workstations
- Brand new restrooms featuring modern finishes
- Plug-and-play, move-in ready space—fully wired, furnished, and available for immediate occupancy
- Above-standard, full-floor installation
- Efficient side-core layout maximizing usable space
- Prime location just blocks from Union Square and Gramercy Park



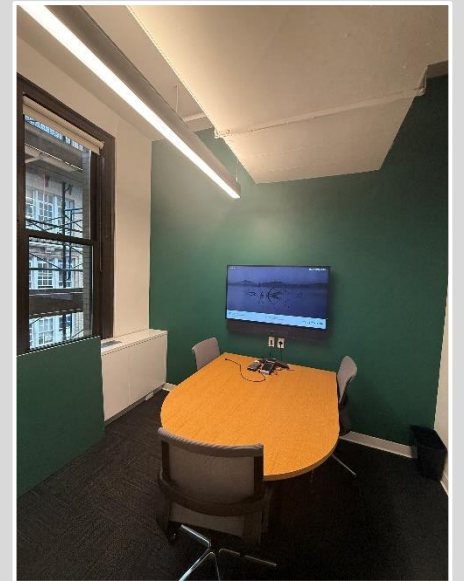


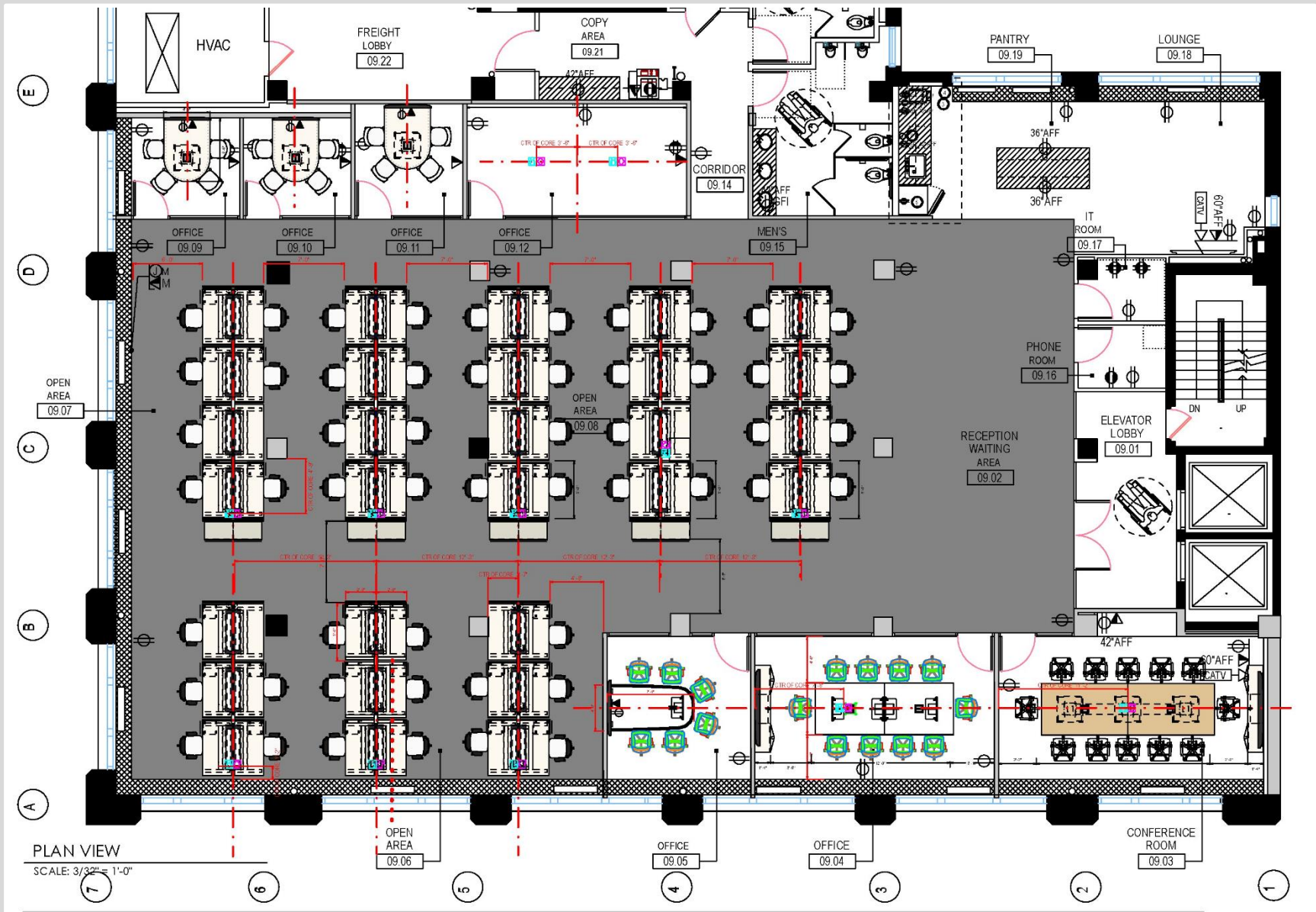


**PREMISES:** Entire 9<sup>th</sup> Floor: 9,353 RSF

**POSSESSION:** Arranged

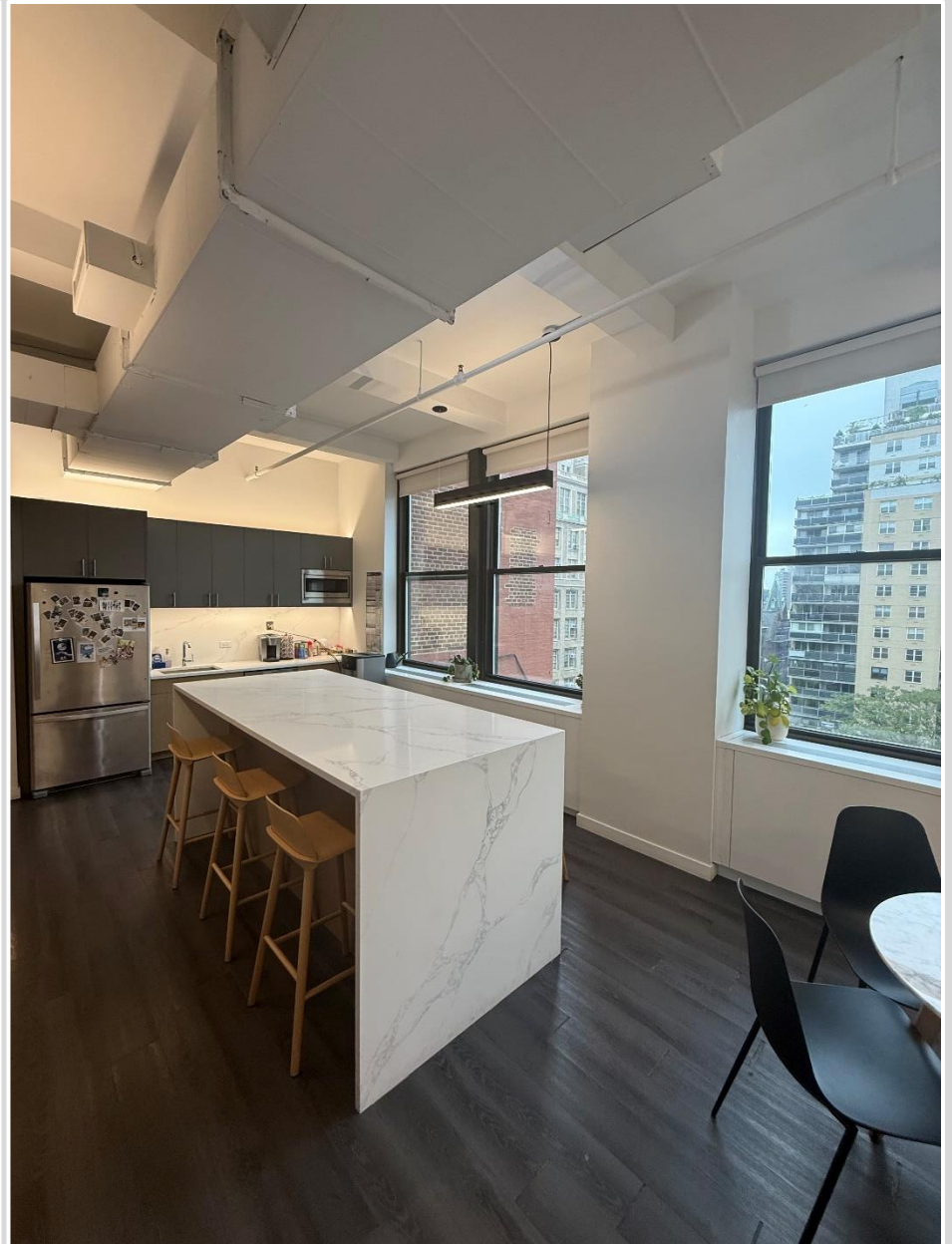
**TERMS:** February 27, 2029



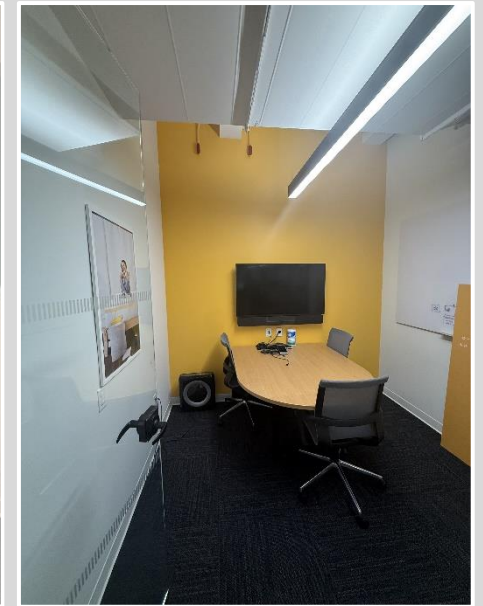
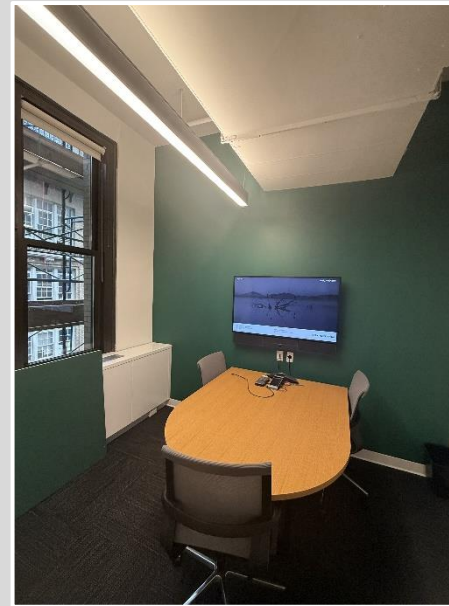
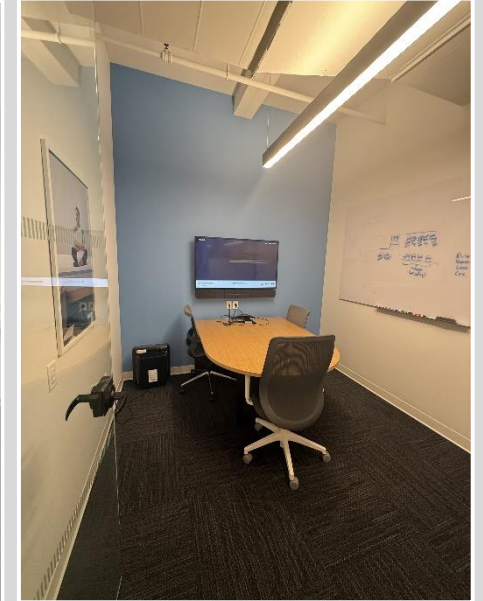


## FLOOR PLAN 9,353 RSF









# 30 IRVING PLACE

---

**SUBLEASE**

