

CHELSEA OFFICE CO-OP FOR SALE

127  
W 24

Between Sixth and Seventh Avenues  
New York, NY





## CHELSEA OFFICE CO-OP FOR SALE

# 127 W 24

**Available:**

Entire 2nd Floor:

**Size:**

6,096 RSF

**Asking Price:**

\$4,114,800 (\$675/RSF)

**Maintenance Charges:**

\$80,250 (\$13.16/RSF)

(inclusive of Real Estate Taxes)

**Unit Features:**

- Attractively renovated with exposed brick, beam ceilings, hardwood floors and an efficient layout.
- Creative loft-like office space with large windows, high ceilings and efficient cooperative management .
- Full floor opportunity with renovated lobby in a the most desirable office submarket
- Located in the heart of the thriving Chelsea submarket in close proximity to the FIT campus and Madison Square Park.
- Up to 90% financing is readily available for qualified purchasers.
- Prime Chelsea location within close proximity to public transportation including the A, C, E, 1, 2, F, M, N & R trains.
- Ideal for showrooms, artists and creative users.





High ceilings and large windows provide great natural light



Attractive exposed brick

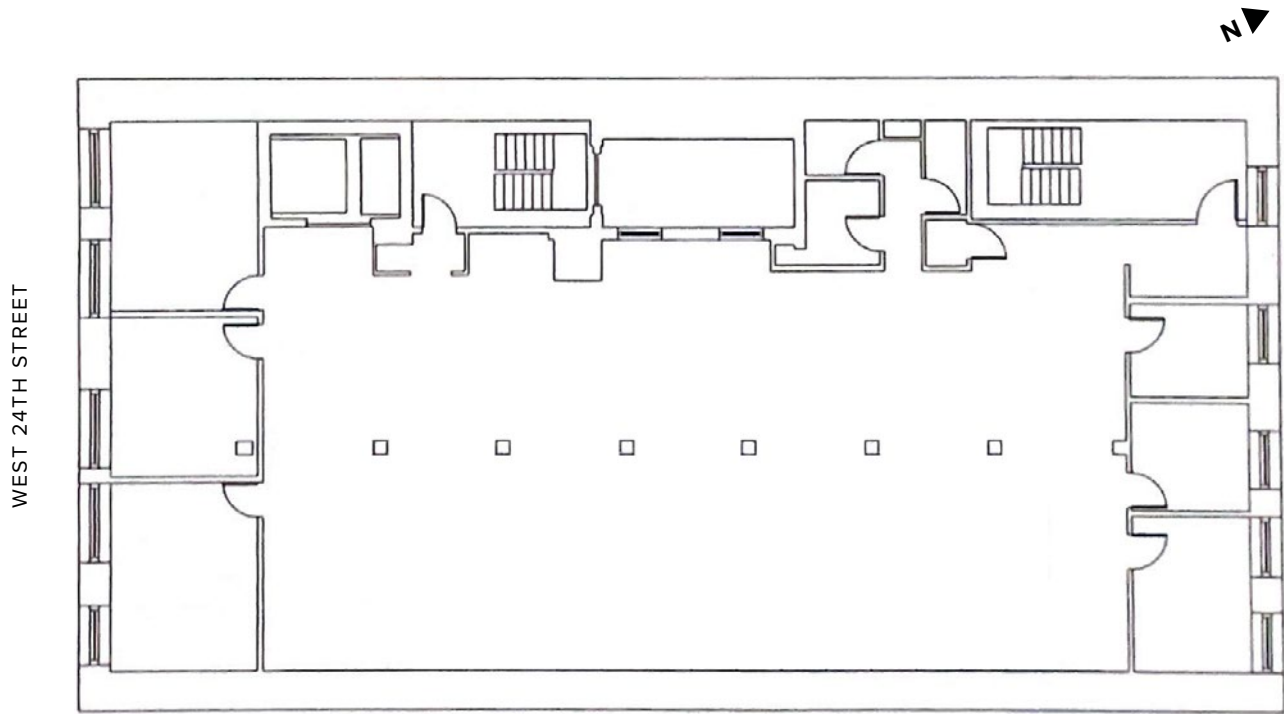




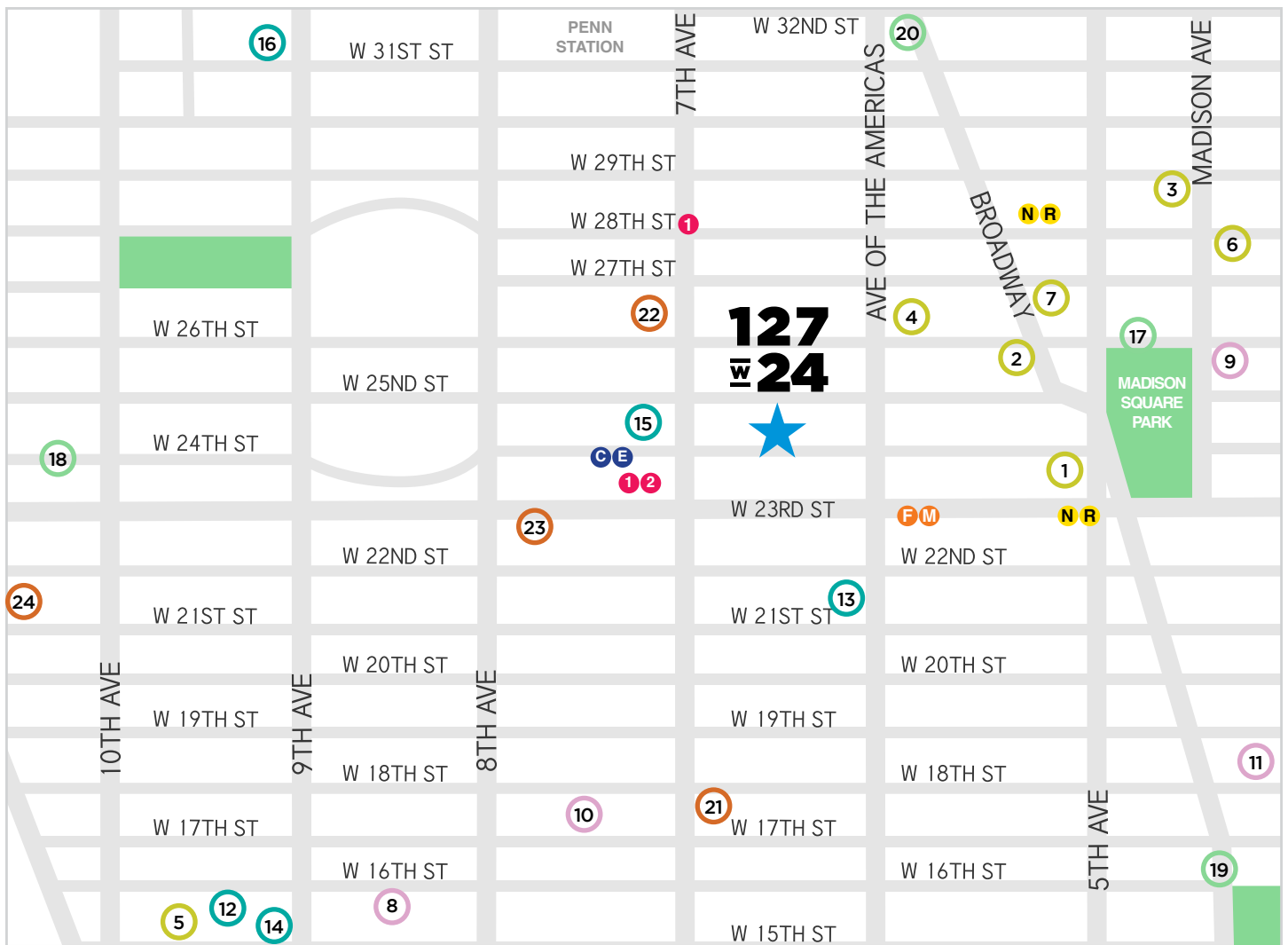
Building Lobby

CHELSEA OFFICE CO-OP FOR SALE

127  
W 24



Entire 2nd Floor  
6,096 RSF



127 West 24th Street is situated in a variety of dining, retail, office tenants, parks, and cultural landmarks including:

### Restaurants & Cafés

- 1 Eataly NYC Flatiron
- 2 La Pecora Bianca
- 3 Scarpetta
- 4 The Grey Dog
- 5 Miznon
- 6 Café Grumpy
- 7 The Smith

### Office Tenants

- 8 Google NYC Headquarters
- 9 Yelp NYC
- 10 X NYC
- 11 Warner Bros. Discovery

### Retailers

- 12 Chelsea Market
- 13 Trader Joe's
- 14 Anthropologie
- 15 Whole Foods Market
- 16 Peloton Showroom

### Parks & Outdoor Spaces

- 17 Madison Square Park
- 18 The High Line
- 19 Union Square Park
- 20 Greeley Square Park

### Cultural Landmarks

- 21 The Rubin Museum of Art
- 22 The Museum at FIT
- 23 Cinepolis Chelsea
- 24 Chelsea Art Galleries