

SEVENTH FLOOR **MEDICAL CO-OP**

PRICE	\$900,000
APPROX SIZE	1,250 SQ FT
MAINTENANCE	\$5,744 PER MONTH
FLIP TAX	NONE
FINANCING	75% MAXIMUM



115 EAST 61ST STREET, SUITE 7E
BETWEEN PARK AND LEXINGTON AVENUE

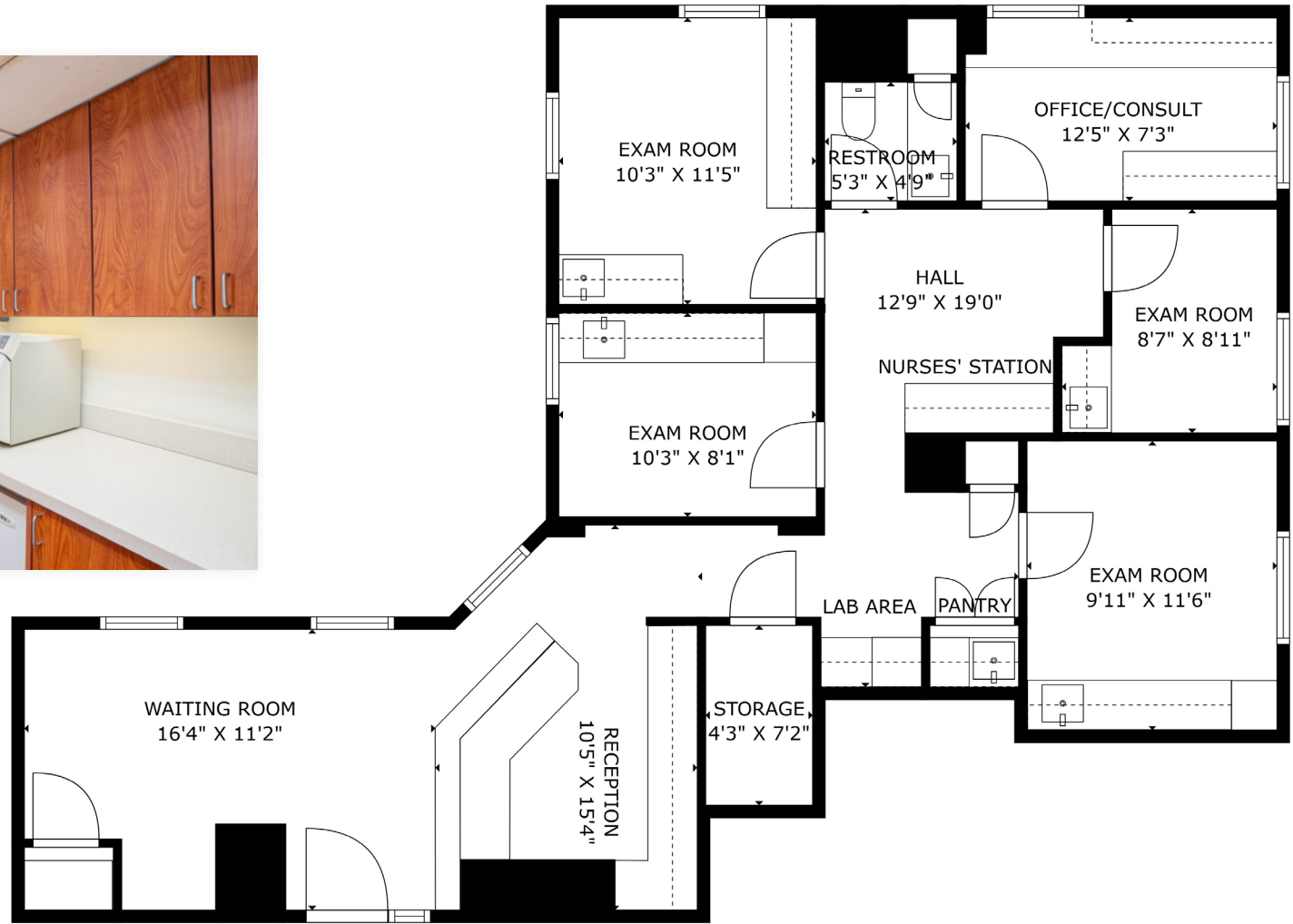
LAYOUT

- WAITING AREA
- RECEPTION
- FOUR EXAM ROOMS
- OFFICE/CONSULT
- NURSES' STATION
- STORAGE CLOSET
- RESTROOM

ADDITIONAL FEATURES

- CENTRAL AIR CONDITIONING
- TEN WINDOWS
- SPEAKER SYSTEM
- RECESSED AND OVERHEAD LIGHTING
- ADAPTABLE TO ANY MEDICAL SPECIALTY





FLOOR PLAN FOR ILLUSTRATIVE PURPOSES ONLY