

FOURTH FLOOR
MEDICAL CONDO
FOR SALE OR LEASE

PRICE (SALE) \$1,675,000
APPROX SIZE 1,000 SQ FT
APPROX MAINT \$1,500 PER MONTH
APPROX TAXES \$11,000 PER YEAR
FINANCING 50% MAXIMUM

PRICE (LEASE) \$12,750/MONTH



30 CENTRAL PARK SOUTH, 4A
CENTRAL PARK SOUTH, MANHATTAN, NY 10019

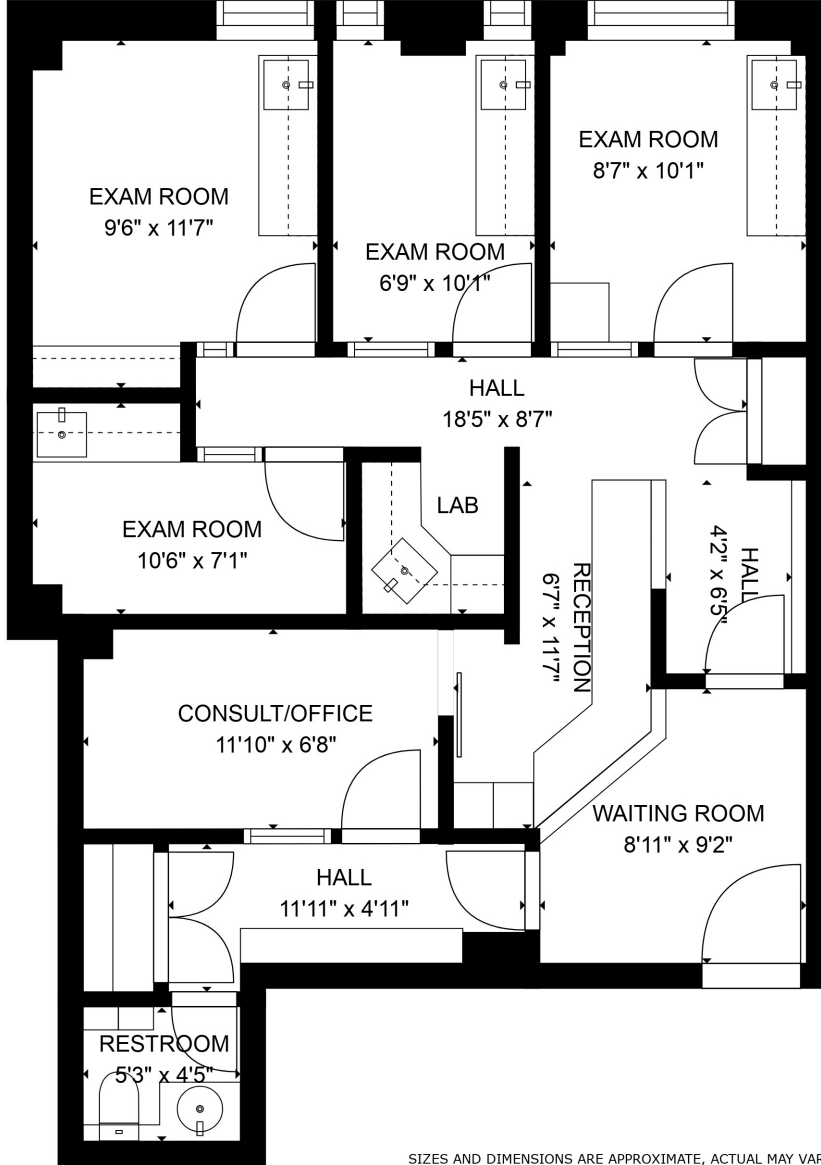
LAYOUT

- WAITING ROOM
- RECEPTION AND ADMINISTRATIVE AREA
- FOUR EXAM ROOMS
- CONSULT/OFFICE
- UTILITY ROOM
- RESTROOM

ADDITIONAL FEATURES

- FOUR WINDOWS FACING CENTRAL PARK
- CENTRAL AIR CONDITIONING
- PRISTINE, MOVE-IN READY DENTAL SUITE
- ADAPTABLE TO MANY MEDICAL SPECIALTIES





SIZES AND DIMENSIONS ARE APPROXIMATE, ACTUAL MAY VARY.

