

EXCLUSIVE LISTING
159 BOWERY



159 BOWERY

LOCATION

Between Kenmare and Broome Streets

AREA

Ground Floor +
Cellar 1,750 SF
1,500 SF

Second Floor +
Outdoor Patio 1,300 SF
300 SF

Third Floor +
Private Roof Deck 1,300 SF
1,100 SF

FRONTAGE

23'-25'

CEILING HEIGHTS

Ground Floor 11'2"
Second Floor 8'6"
Third Floor 12'6"

POSSESSION

Immediate

COMMENTS

- Brand new modern development with high end finishes.
- Rare opportunity to lease an entire building totaling up to 5,840 SF.
- Building can be leased separately or together.
- All glass storefront promoting large amounts of natural light on Bowery's hottest stretch.
- Steps from the Grand Street subway station servicing over 7 million annual riders and the Bowery subway station.
- Average household income of over \$100,000.
- In close proximity to Essex Crossing with 1.8 million SF of mixed-use retail, residential and commercial space.
- Neighborhood tenants include, Supreme, Sel Rose, Wayan, The Moxy Hotel, Citizen M, et al.
- All uses considered.

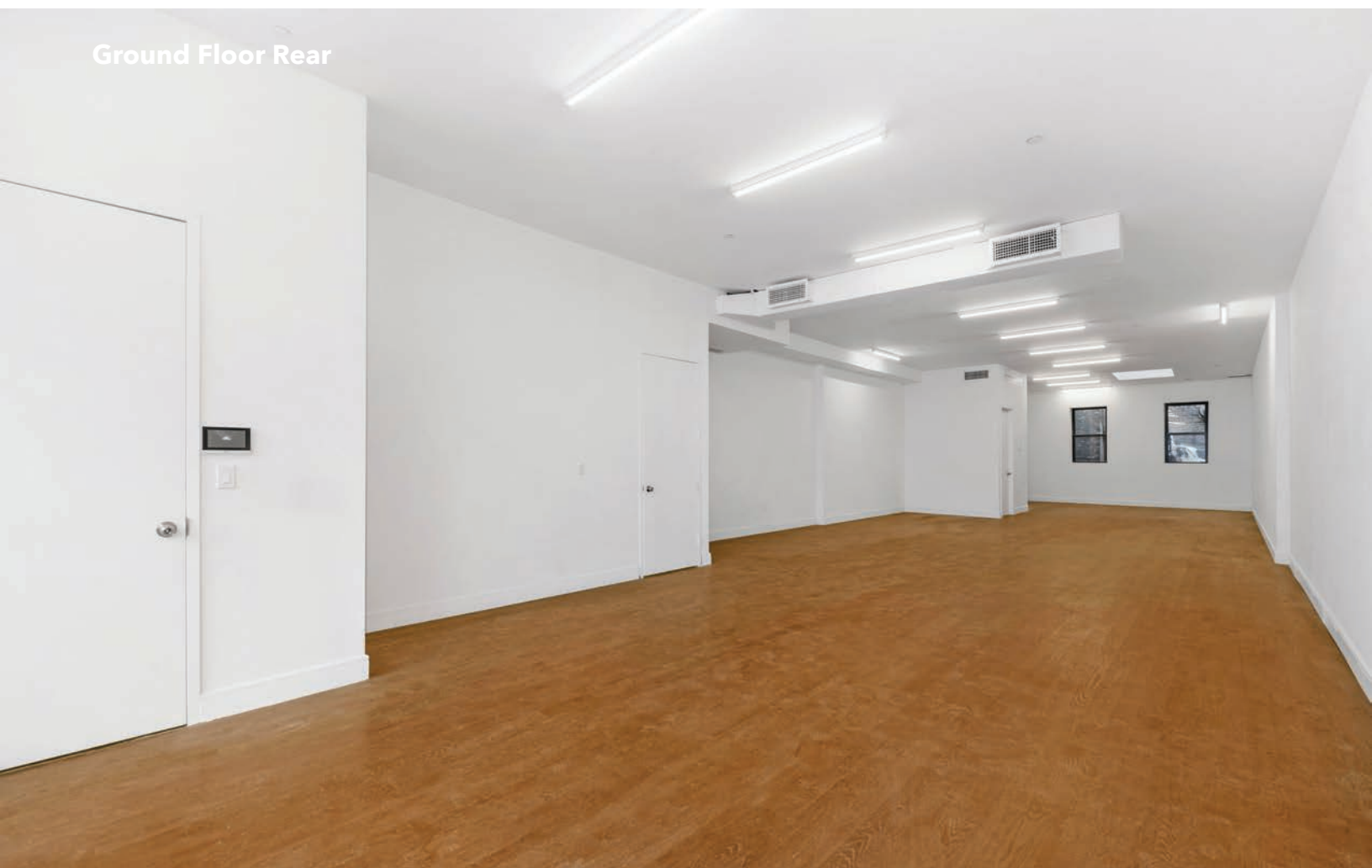


159 BOWERY

Ground Floor Front



Ground Floor Rear



159 BOWERY

Second Floor Front



159 BOWERY

Second Floor Outdoor Patio



159 BOWERY

Private Roof Deck



Third Floor Front



159 BOWERY

