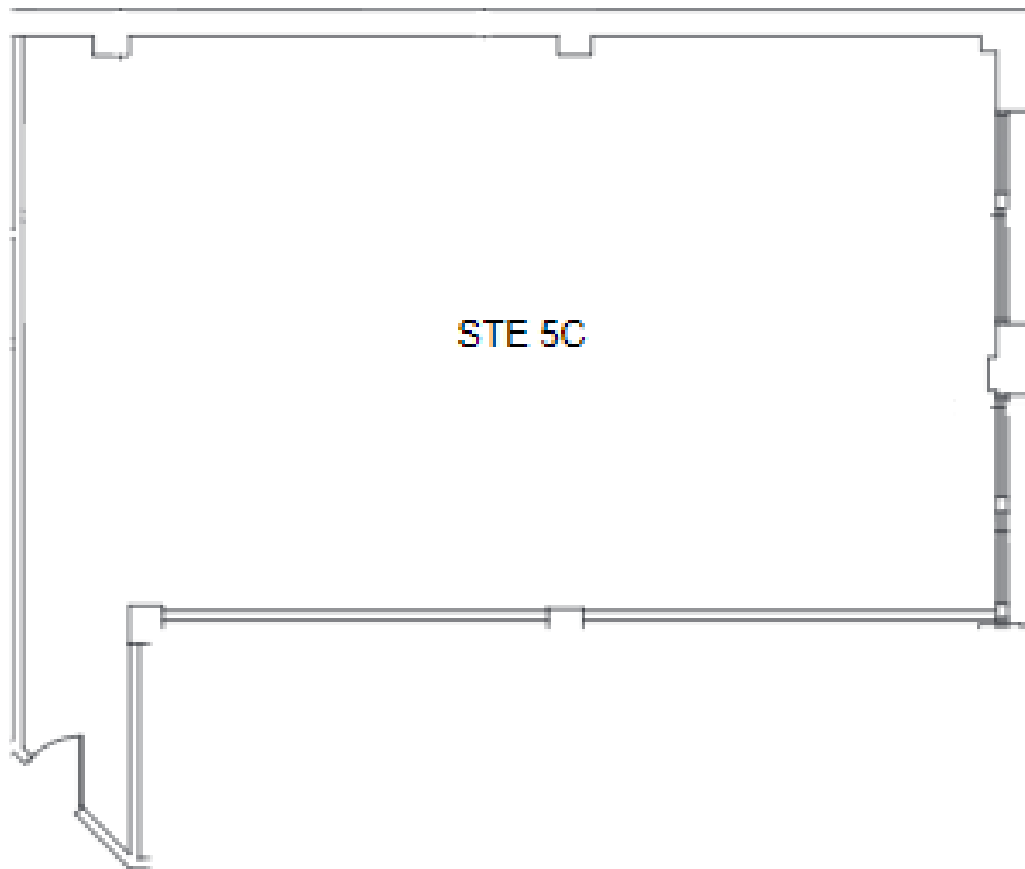


130 West 25 Street - Suite 5C - 1325 RSF

•Newly re-finished space •Well-maintained building •Front facing •Hardwood floors •High ceilings •Move-in ready •Sub-metered electric •Water/sprinkler \$40/\$30 per month •Term 3-5 years •Annual escalations 3% •Trash extra •Prop. Share of RE Taxes over Base Year

Floor Plan



Photos





