

125 Fifth Avenue



125 Fifth Avenue

SUBLET

Leasing
Type

1,500 SF

Available
Office/Medical Use

PARTIAL 2ND FL

Floor

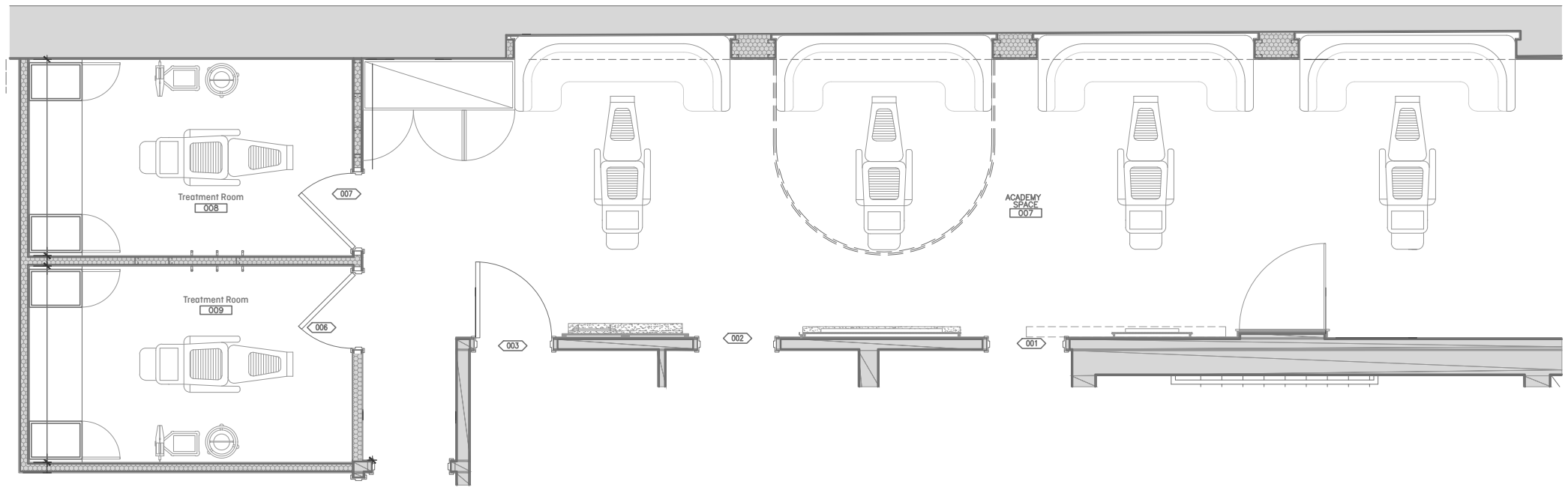
KEY NOTES

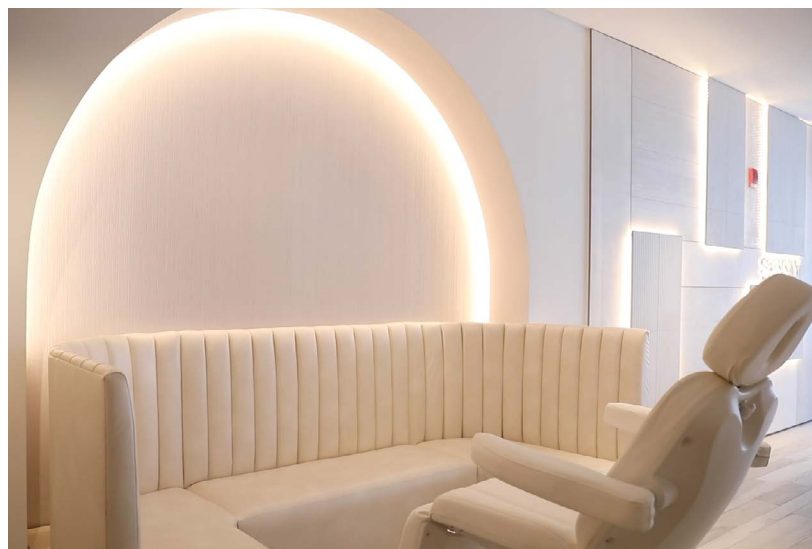
- Between East 19th & East 20th Street
- Located in the heart of Flatiron District
- 3 blocks from the iconic Flatiron Building
- Co-tenant: Skinney Medspa + Wellness
- Full build out in excellent condition
- 1-2 private rooms available
- Includes kitchen and storage
- Largely newly renovated space
- Column free space
- Floor to ceiling windows

TRANSPORTATION

- Near by subways & buses







EXCELLENT SUBLEASE OPPORTUNITY SUMMARY



HIGH END FINISHES
& FURNITURES



FULL HEIGHT GLASS &
AMPLE NATURAL LIGHT



AVAILABLE KITCHEN
& STORAGE



BEAUTIFUL MARBLE TILE
RESTROOMS

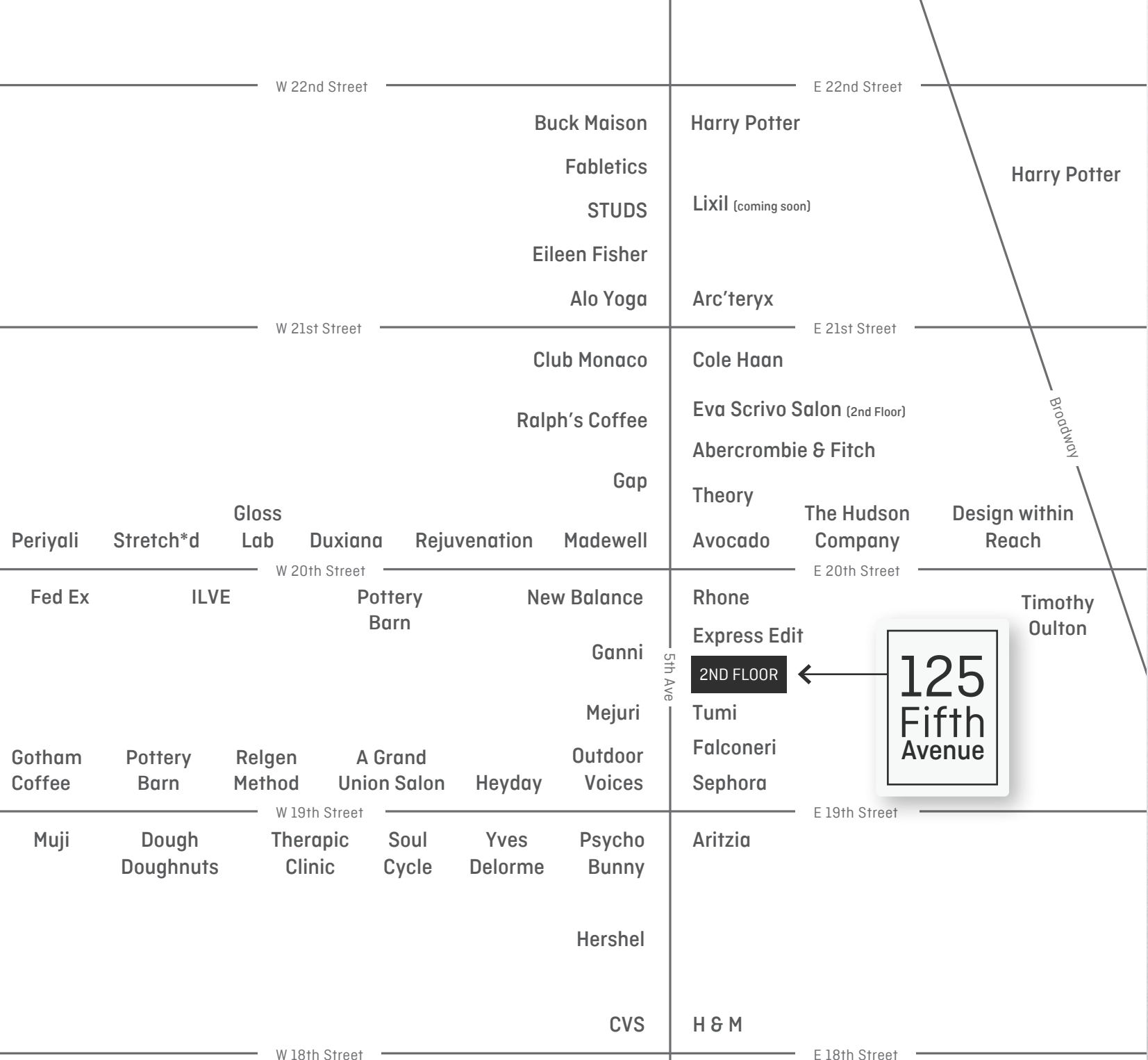
IDEAL LOCATION FOR ANY BEAUTY/CARE USE



CONCENTRATED BEAUTY
& WELLNESS HOTSPOTS



BUSINESS SUPPORT FROM
HOTEL & HOSPITALITY SECTOR



125 Fifth Avenue