

461 Park Avenue South

MIDTOWN SOUTH - PART 8TH FL

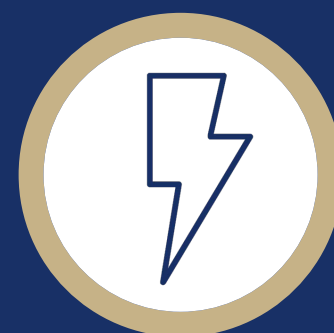
HIGHEST END PREBUILT ON PARK AVE SOUTH



RENT:
Upon request



POSSESSION:
October 2022



ELECTRIC:
Direct



TERM:
Flexible

IDEAL FOR:

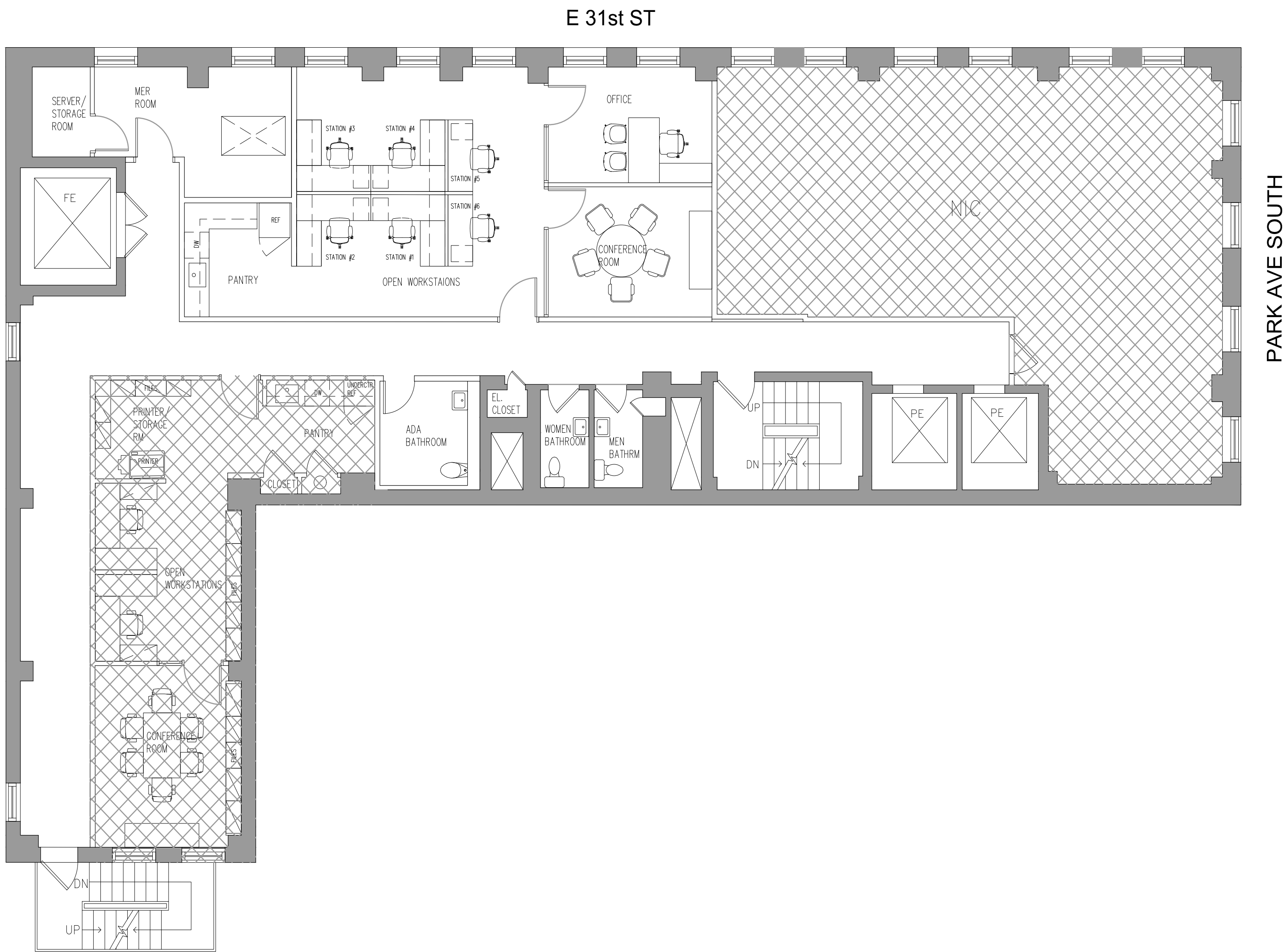
- LAW AND SALES OFFICES
- ACCOUNTING
- FINANCIAL SERVICES
- MARKETING AND ADVERTISING
- TECH AND DESIGN

- BOUTIQUE OFFICE BUILDING STRADDLING MIDTOWN & MIDTOWN SOUTH
- CONVENIENTLY LOCATED BY THE LEXINGTON IRT #6 SUBWAY LINE AT 32ND STREET
- WALKING DISTANCE TO BOTH GRAND CENTRAL AND PENN STATION
- RENOVATED LOBBY AND ELEVATORS
- CONTROLLED VISITOR ACCESS + EGRESS

HIGHLIGHTS:

- High end finishes
- 11' Exposed ceilings
- Pendant light fixtures
- Oval ducts
- Glass steel partition system
- Renovated ADA compliant private restrooms
- New thermal pane windows

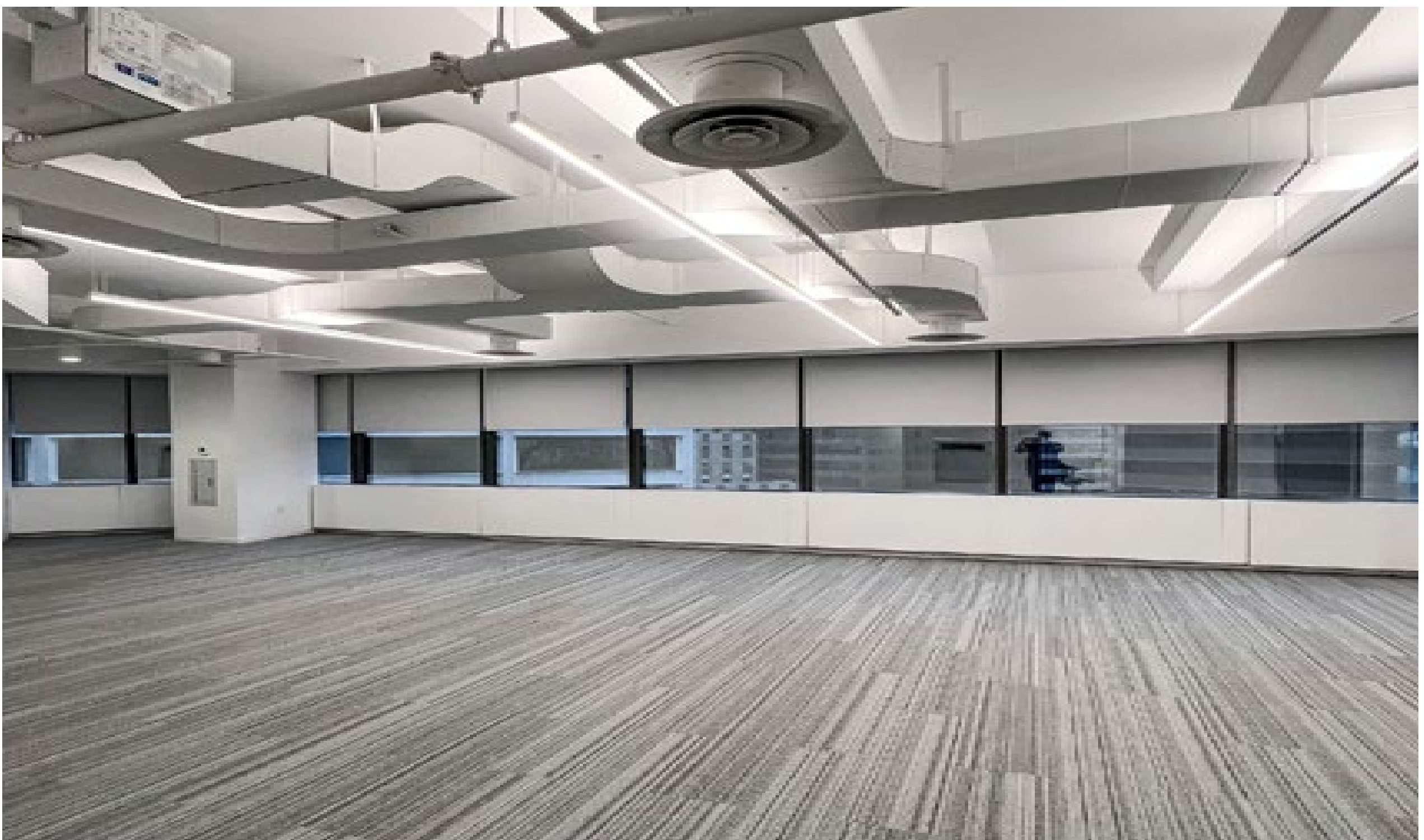
461 Park Ave South



PREBUILT LAYOUT
Part 8th Floor

1,500rsf

461 Park Ave South



TYPICAL PREBUILT FINISHES
Part 8th Floor

1,500rsf

461 Park Ave South



TYPICAL PREBUILT FINISHES
Part 8th Floor

1,500rsf

461 Park Ave South

