

450

SEVENTH
AVENUE

SEE THE VIRTUAL TOUR

HIGH-END SUITE ON FASHION AVENUE

SPACE
SUITE 705

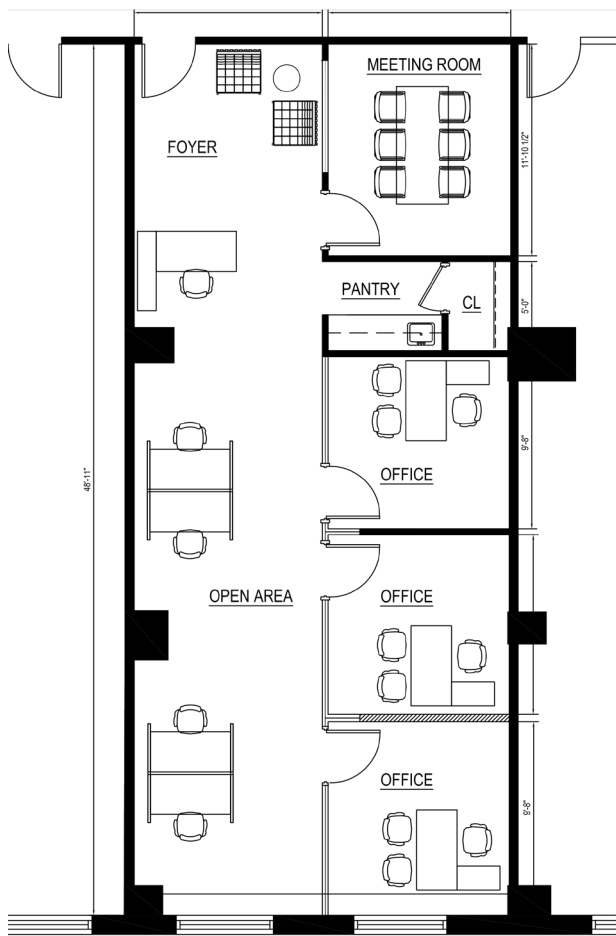
RENT
INQUIRE

SIZE
1,598 SF

TERM
NEGOTIABLE

SPACE DETAILS

- BRIGHT, OPEN WORK SPACE
- GLASS-FINISHED OFFICES & MEETING ROOM
- PANTRY
- 24/7 BUILDING ACCESS
- TENANT CONTROLLED A/C





ABOUT THE BUILDING

Nelson Tower is at the crossroads of transportation, technology and history — standing 46-stories high in the heart of the Garment District.

With 24/7 building access and available conference center for extra conferencing needs, Nelson Tower offers flexibility to a variety of tenants.

Settled between West 34th and West 35th, 450 Seventh Avenue is highly connected to major subway and bus lines, Penn Station, Port Authority, and Grand Central.

Nelson Tower is established in a lively location on Fashion Avenue between Penn Station and Herald Square. There's certainly no shortage of restaurants, entertainment, hotels, shopping, and more in the neighborhood.

