

# 159 Bowery

Between Broome & Kenmare | Nolita



Full Building Branding Opportunity

# 159 Bowery

Between Broome & Kenmare | Nolita

**SIZE:**

- Ground Floor - 1,740 SF
- Second Floor - 1,300 SF
- Third Floor - 1,300 SF
- Cellar - 1,500 SF

**FRONTAGE:** 23'

**CEILING HEIGHT:** 10'

**POSSESSION:** Immediate

**ASKING RENT:** Upon Request

**TRANSPORTATION:** J Z B D

## PROPERTY HIGHLIGHTS:

- Full Building Branding Opportunity
- New Construction with brand new HVAC in place
- Rare flagship opportunity in the heart of Nolita/Bowery
- High volume street traffic / visibility
- First time available
- Two separate roof deck opportunities
- Two leasing options available:
  - 1: Full building
  - 2: Retail + Ground Floor leased separate from Upstairs

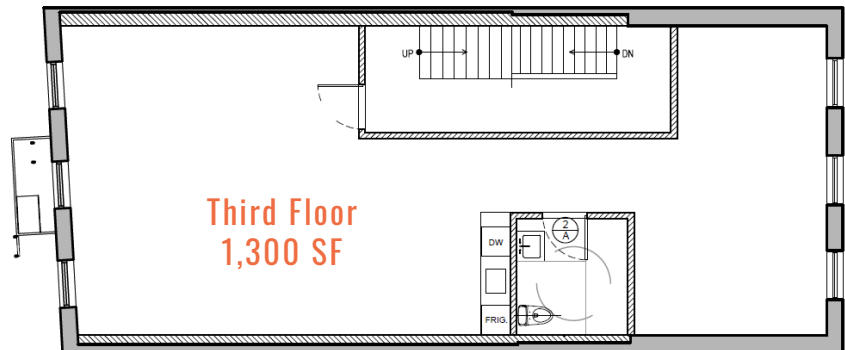
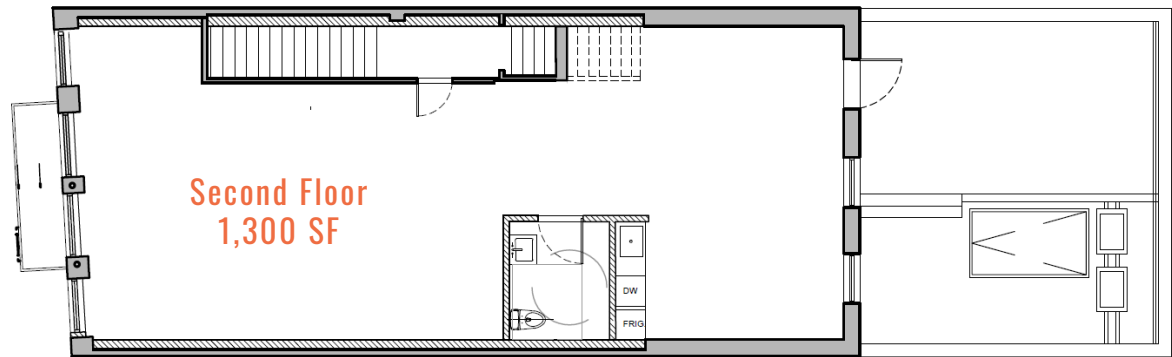
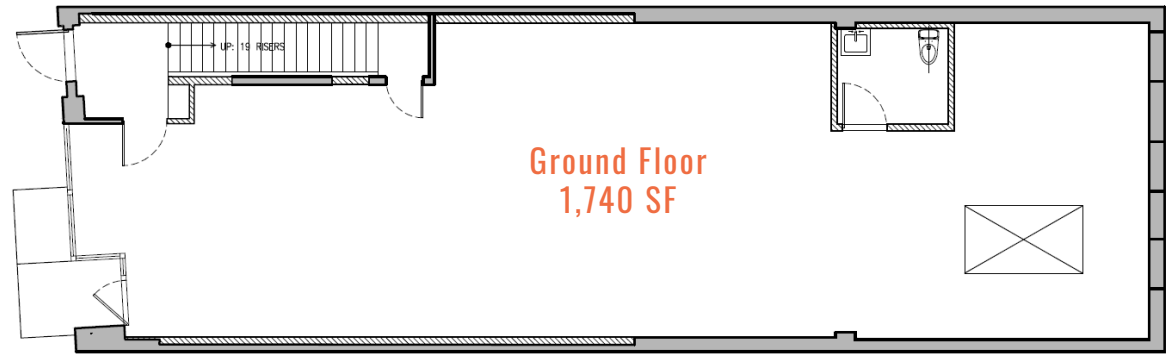
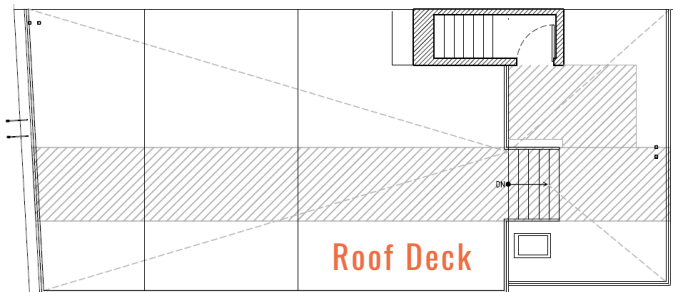
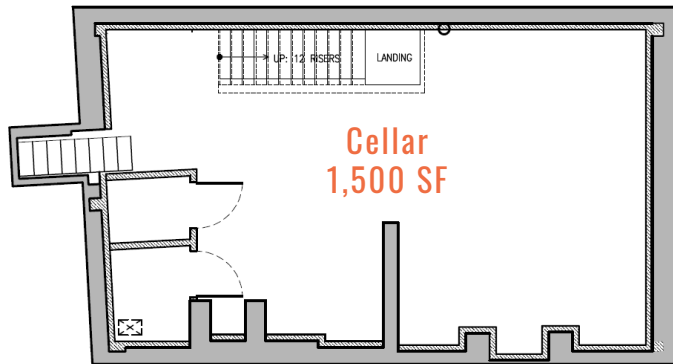
Join **Supreme** & **moxy** HOTELS



# 159 Bowery

Between Broome & Kenmare | Nolita

Floor Plans - Division Scenario 1  
Full Building: 5,840 SF Total



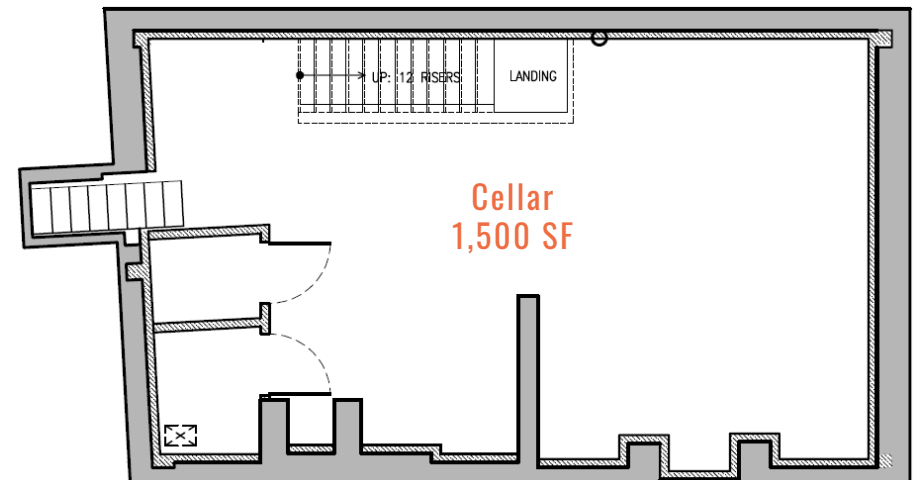
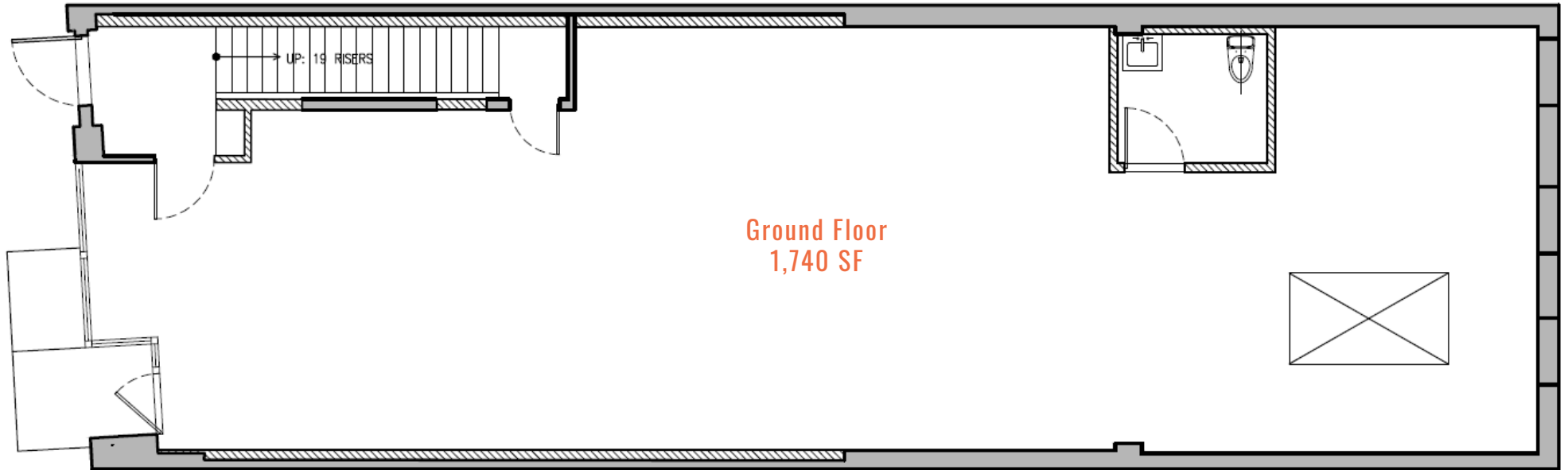


# 159 Bowery

Between Broome & Kenmare | Nolita

Floor Plans - Division Scenario 2

Retail + Ground Floor: 3,240 SF Total





# 159 Bowery

Between Broome & Kenmare | Nolita

Interiors - Ground Floor





# 159 Bowery

Between Broome & Kenmare | Nolita

## Interiors - Second Floor





# 159 Bowery

Between Broome & Kenmare | Nolita

## Interiors - Third Floor





# 159 Bowery

Between Broome & Kenmare | Nolita

Interiors - Rooftop

