



1270 AVENUE OF
THE AMERICAS



Unit Details

Size: 1,976 square feet

Location: Suite 1820 at 1270 6th Ave, Rockefeller Center

Sublease: 3-Year Term

Turnkey: Move-in ready with all furniture included in the space

Description

Access to Rockefeller Center's amenities

24,000 square feet of private outdoor space at Radio Park

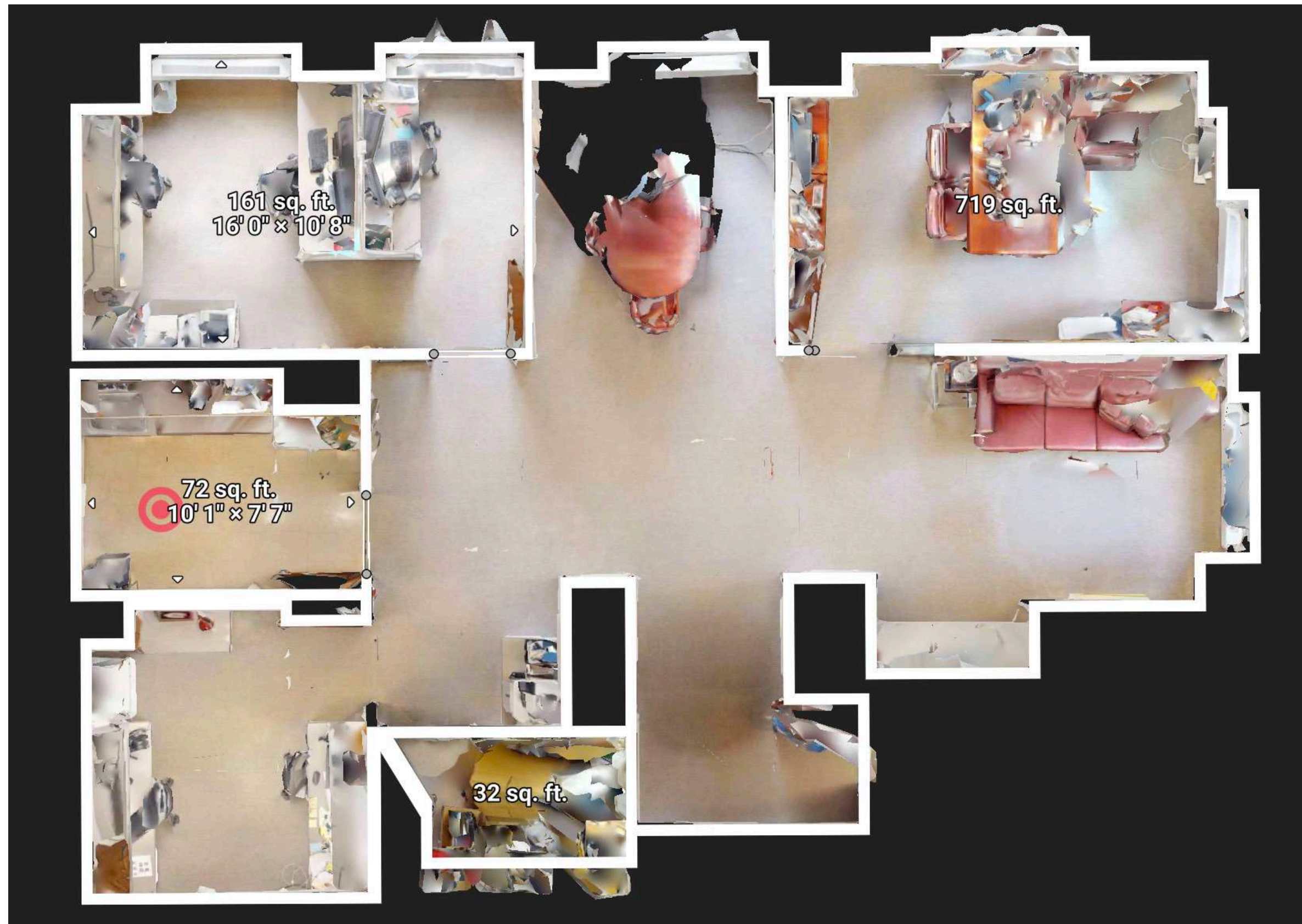
Amenities

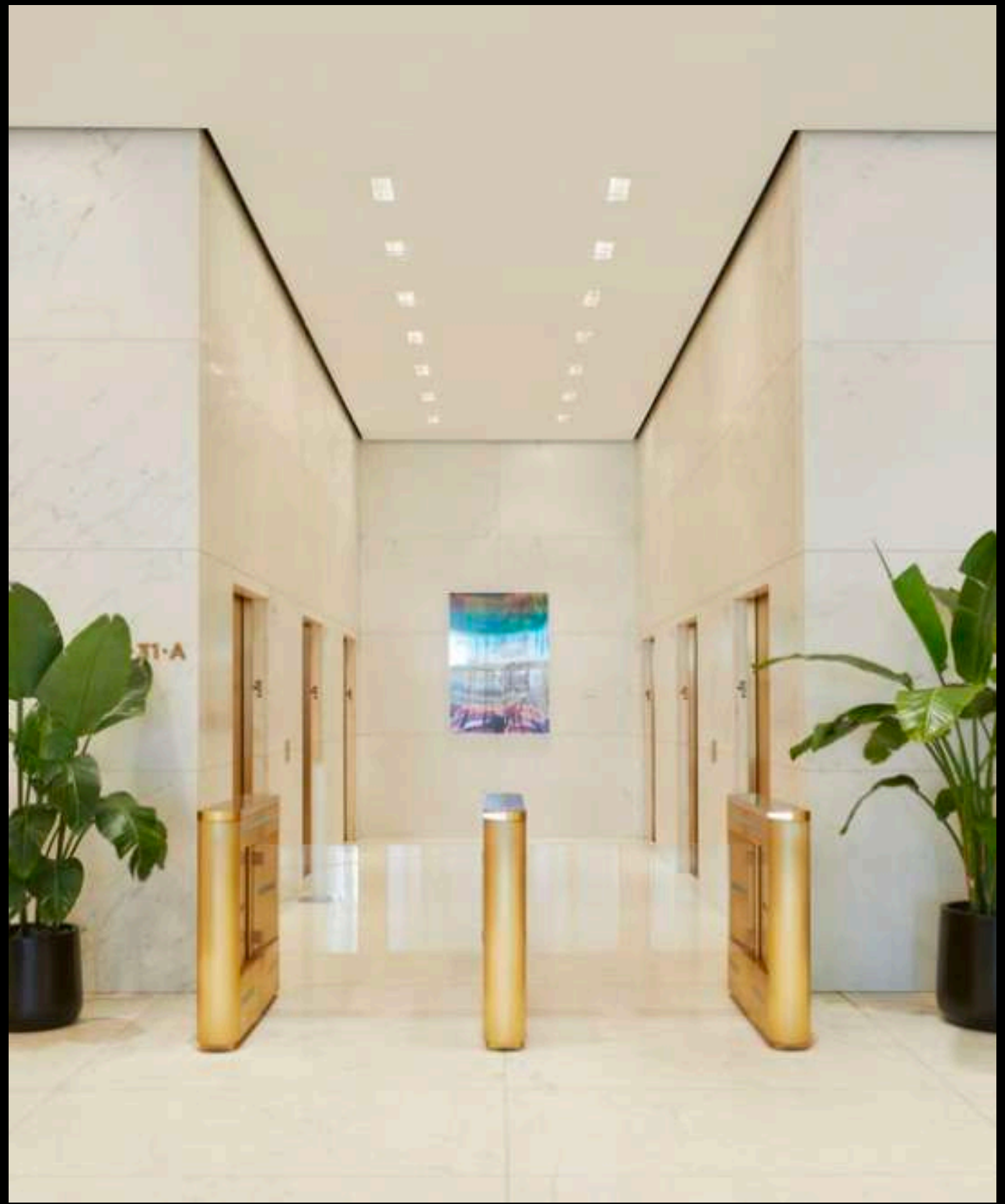
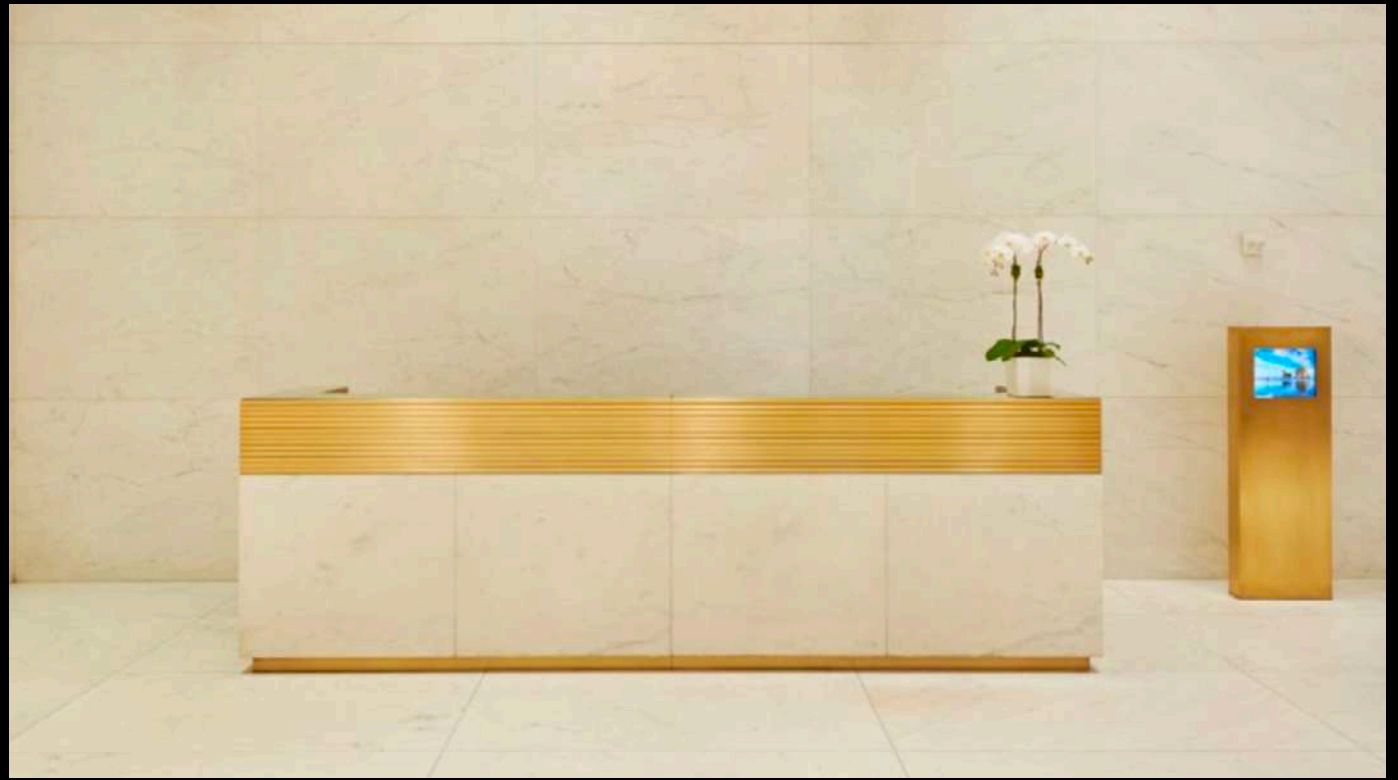
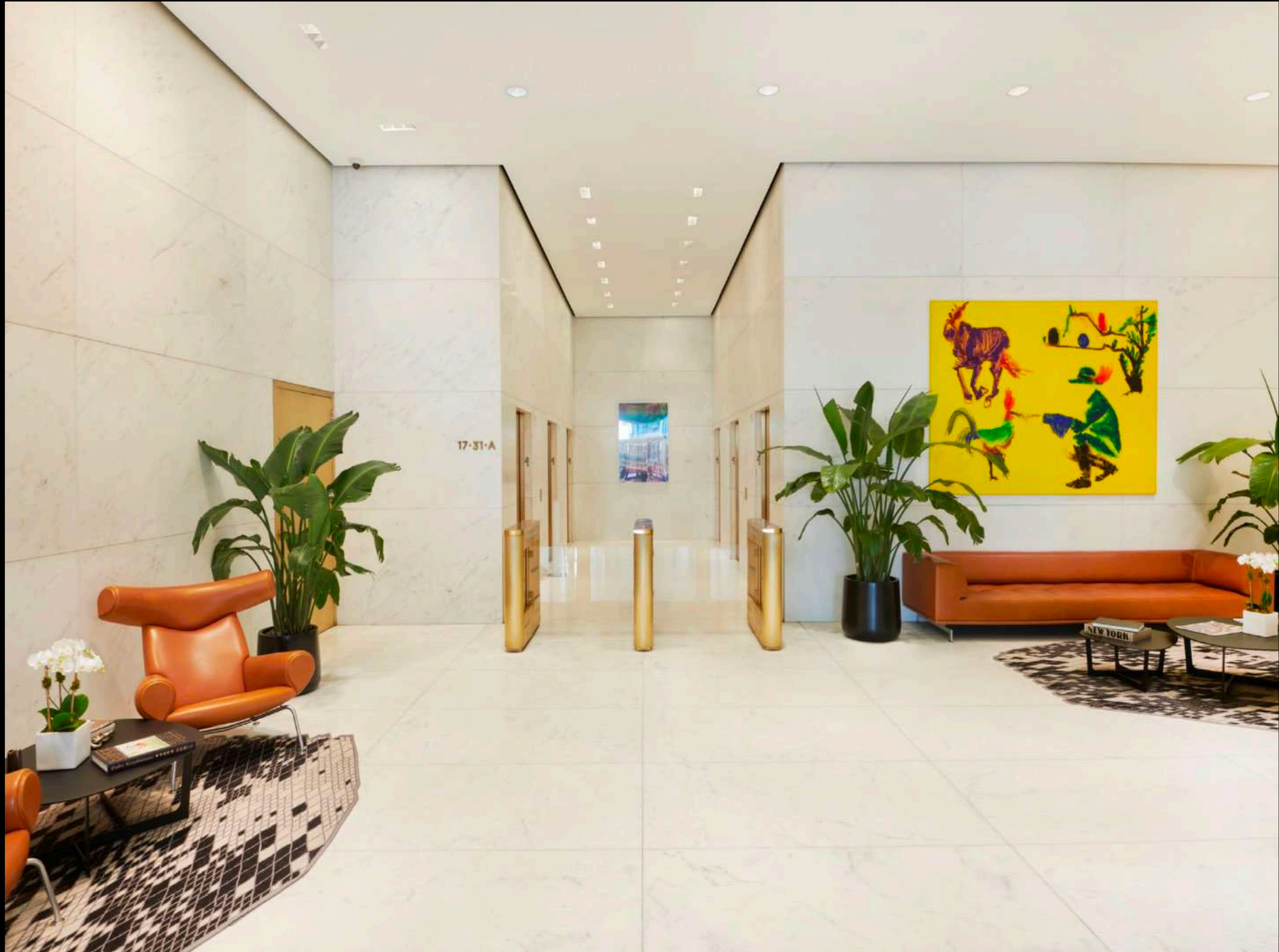
Sky ridge deck

Dining options, grab & go spots,
and entertainment programming available



FLOOR PLAN











EXIT







