

MEDICAL SPACE AVAILABLE

645 MADISON AVENUE



Space Profile

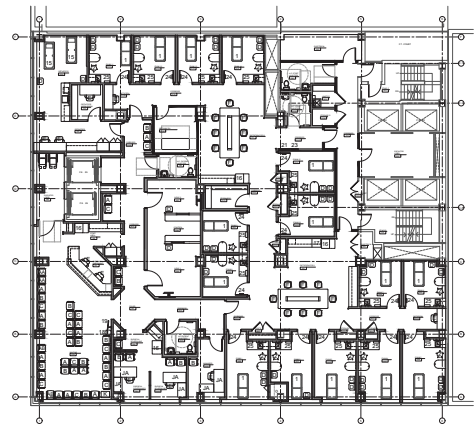
Premises 3rd Floor: 10,715 SF
4th Floor: 10,746 SF
Total: 21,461 SF

Possession Immediate

Asking Rent Upon Request

Term Through 8/31/2032

Private entrance and lobby



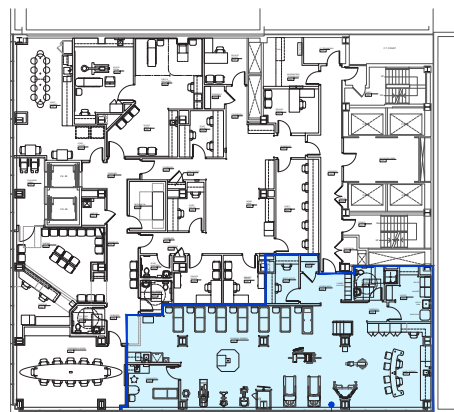
3rd Floor

Features 3rd Floor

- 40 seat reception area
- Surgical scheduling
- Office Manager Office
- Orthotics
- 2 X-Ray
- 4 Bathrooms
- 15 Exam Rooms

Features 4th Floor

- Large Physical therapy area w/ lockers
- Block Suite
- 4 Bathrooms
- Multiple offices
- Staff Lounge + Kitchen
- Conference Room



4th Floor