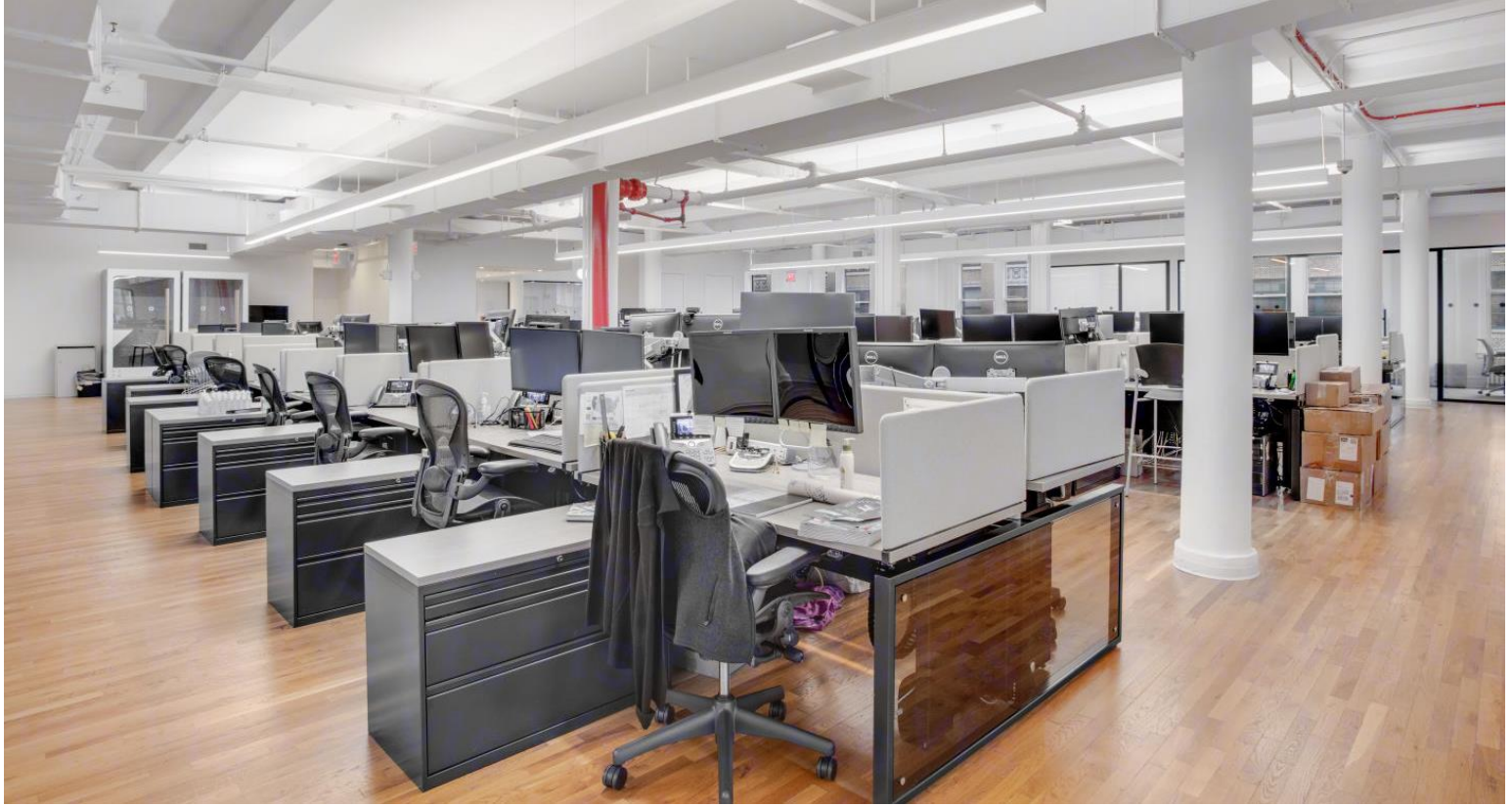


# 45 WEST 25<sup>TH</sup> STREET

10K SF – BUILT, FURNISHED, PLUG-AND-PLAY



ENTIRE 9<sup>TH</sup> FLOOR – 10,912 RSF

# 45 WEST 25<sup>TH</sup> STREET

10K SF – BUILT, FURNISHED, PLUG-AND-PLAY



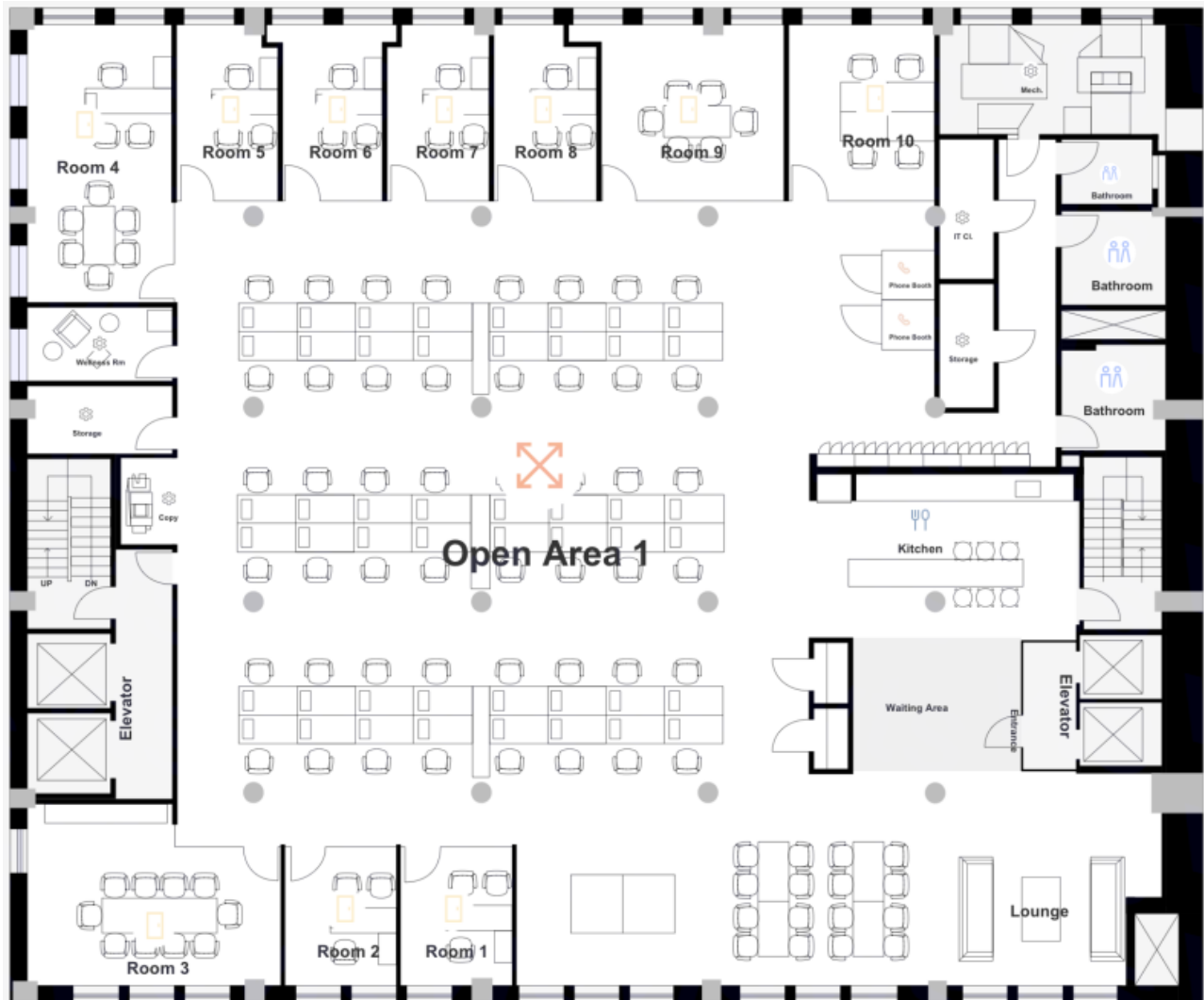
- Located steps away from Madison Square Park
- Full-floor opportunity
- High-end, existing installation
- Virtually brand-new space
- Term through September 2029
- Three (3) sides of light
- Delivered furnished and wired
- Attended lobby
- Numerous subway lines nearby including **F M R W 6 C E 1**





# 45 WEST 25<sup>TH</sup> STREET

10K SF – BUILT, FURNISHED, PLUG-AND-PLAY



- |                    |    |                 |   |
|--------------------|----|-----------------|---|
| ▪ Offices          | 6  |                 |   |
| ▪ Executive Office | 1  |                 |   |
| ▪ Workstations     | 52 | ▪ Phone Booths  | 2 |
| ▪ Conference Room  | 1  | ▪ Large Pantry  | 1 |
| ▪ Meeting Rooms    | 2  | ▪ Breakout Area | 1 |