

THE  
C-SUITE

400  
PARK  
AVENUE



- High-end built suites ready for immediate occupancy
- Diversity of private office options and lease terms considered
- Prestigious Park Avenue address
- Conference room availability
- Ownership and management on-site
- Building fully renovated and modernized

---

POSSESSION      IMMEDIATE

---

TERM              FLEXIBLE

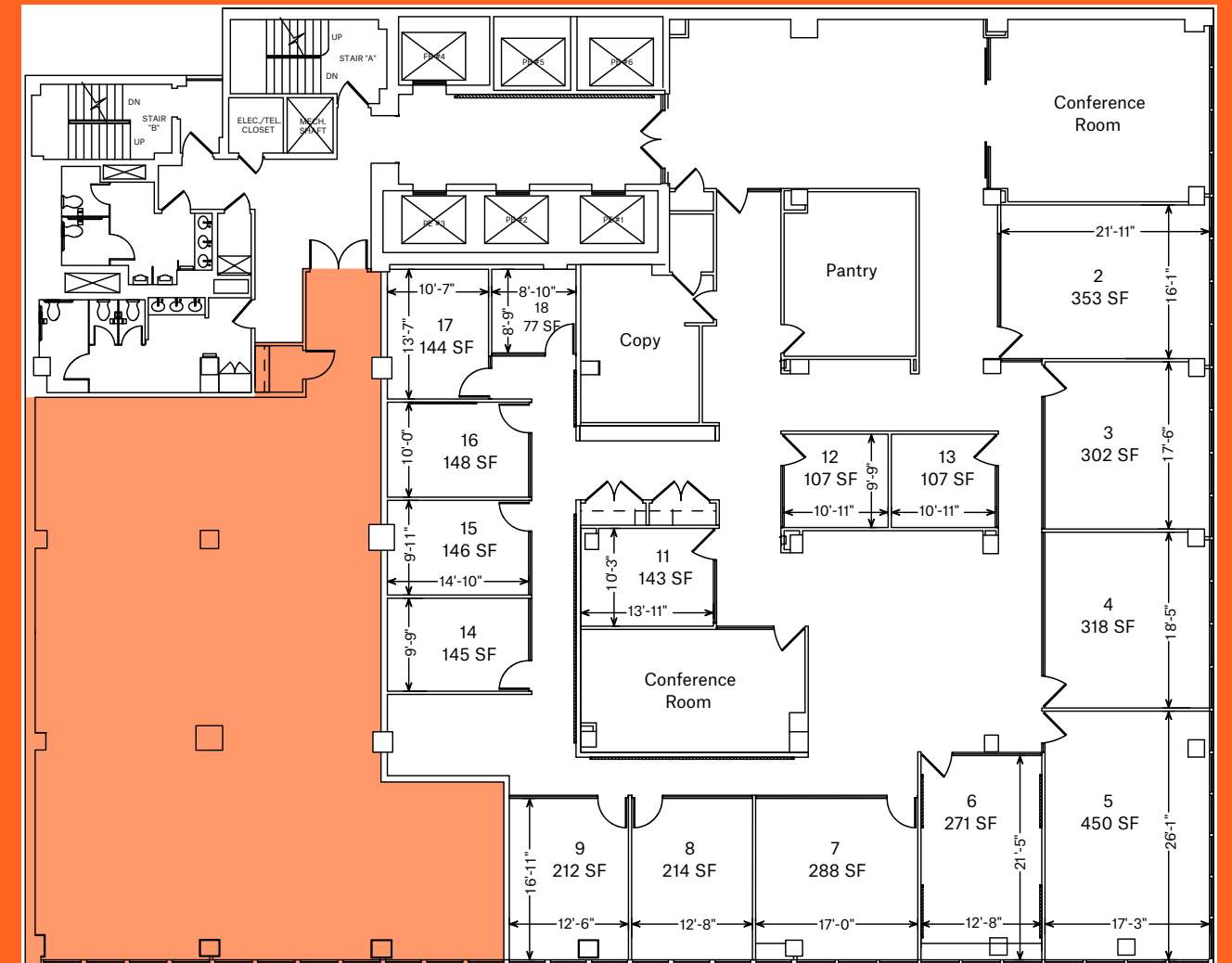
---

CACHET



# CUSTOMIZED

- Direct presence and signage from stunning elevator lobby
- Opulent “trophy” finishes
- Move-in ready installation
- Multiple windowed offices overlooking Park Avenue
- Furniture can be made available upon request



54TH STREET

PARK AVENUE



CENTERPIECE



# CONVENIENT

- Nine minute walk to Grand Central Station
- A vast array of fine dining options, designer boutiques and luxury hotels



CITYSCAPE





- 24/7 Lobby presence
- Manned reception area
- 24/7 keycard entry
- Complimentary food and beverages

COMPREHENSIVE