

1001 Avenue of the Americas

Southwest Corner of West 37th Street



**Full Floor Space
12,017 rsf**

**Great Light
and Views**

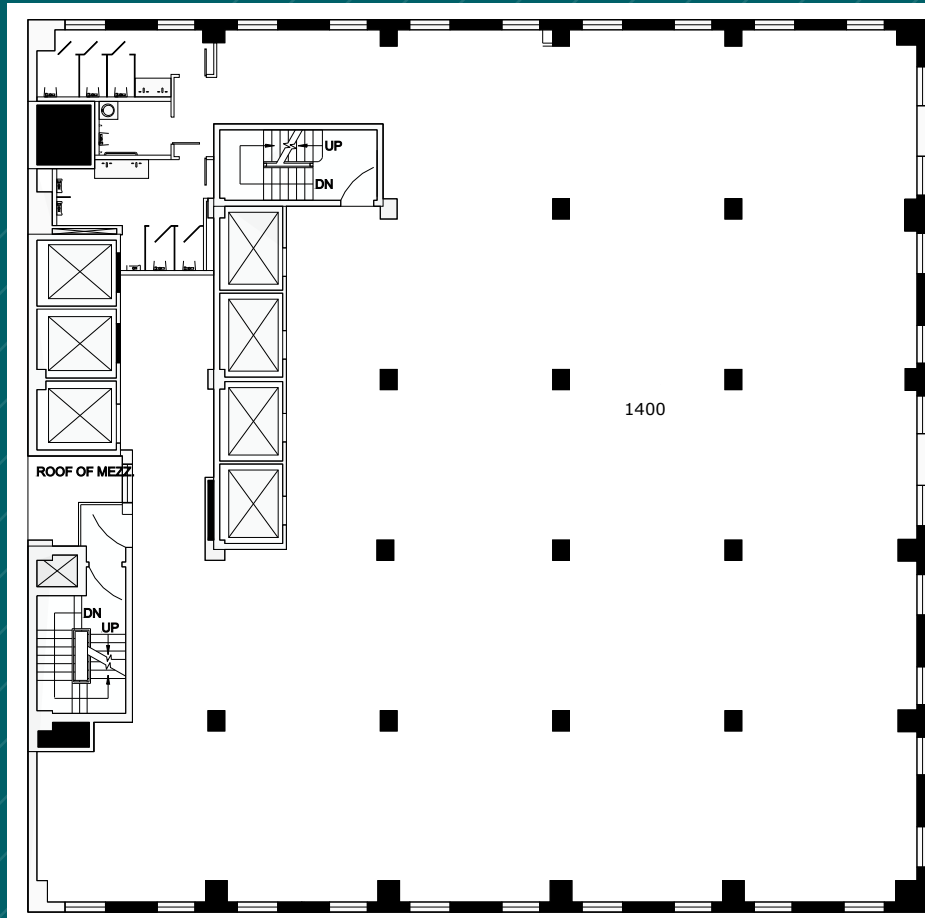
**Fantastic
Bryant Park
Location within
Midtown's
Transit Triangle**



**Short Walk to Times
Square, Penn Station,
Grand Central Terminal
and Bryant Park**

**1 2 3 B D F M
A C E 7 N Q R W
subway lines**

Entire 14th Floor - Base Plan



West 37th Street

Avenue of the Americas

Floor Plan not to scale, for display purposes only

Entire 14th Fl: 12,017 rsf






- Built space featuring 3-Sides of operable oversized windows providing abundant natural light and great views of Madison Square Park, One Vanderbilt, and Empire State Building

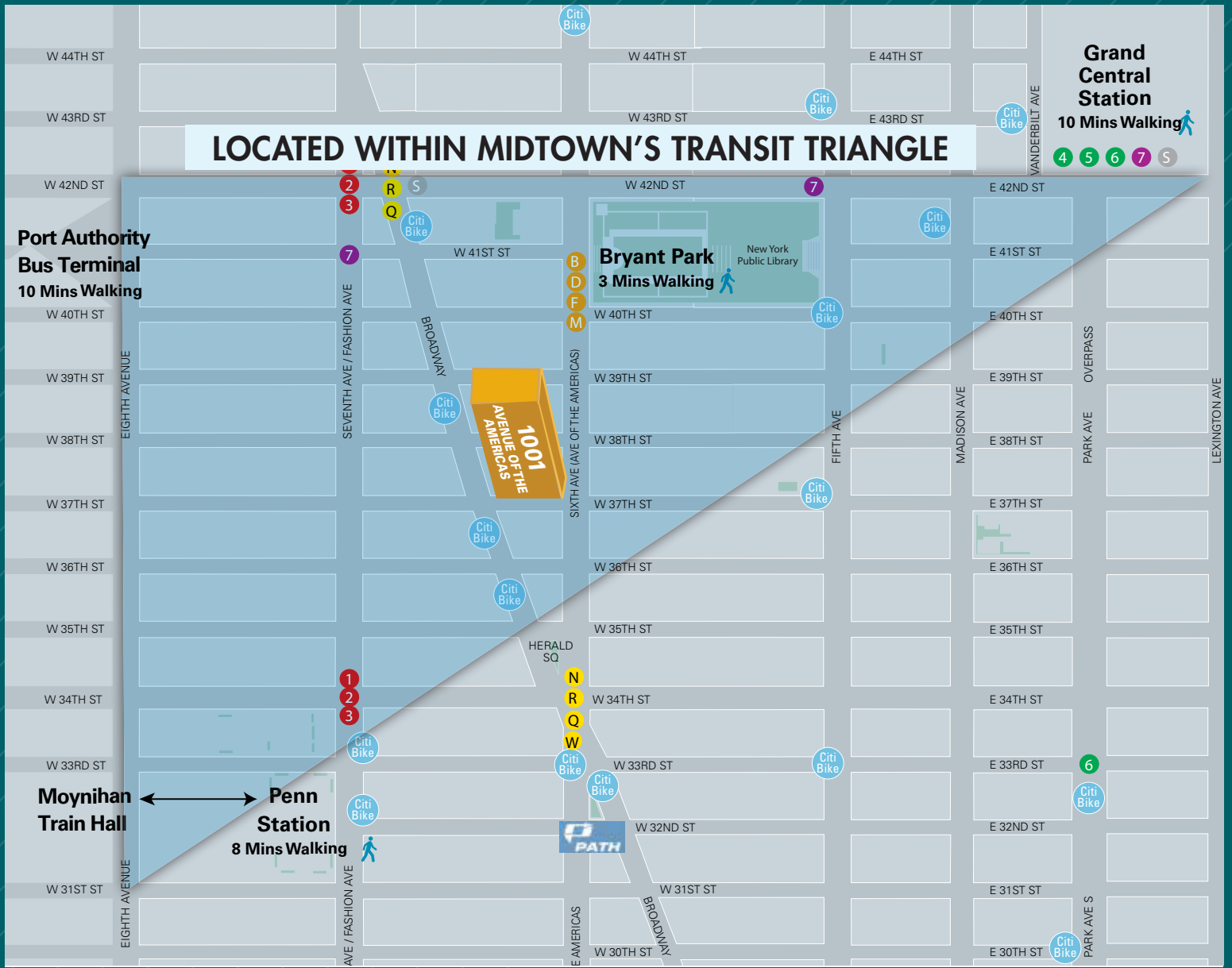
Possession: Immediate

Rent: Call or email for details



Comments:

- Reasonable rents, flexible terms, stable long-term ownership
- Corner building with multiple fiber providers, tenant-controlled A/C, and 24/7/365 access
- Walk to Times Square, Penn Station with seamless connection to the Moynihan Train Hall, Grand Central Terminal, Grand Central Madison LIRR concourse, and Bryant Park transportation hubs providing access to  express and local subway lines and  Metro-North Railroad  NJ TRANSIT  PATH  Long Island Rail Road
- Vicinity of Port Authority Bus Terminal
- Great central location convenient to Times Square and Herald Square services and variety of eateries



Walk to Grand Central Terminal



Blacks from Bryant Park



Moynihan Train Hall



Times Square