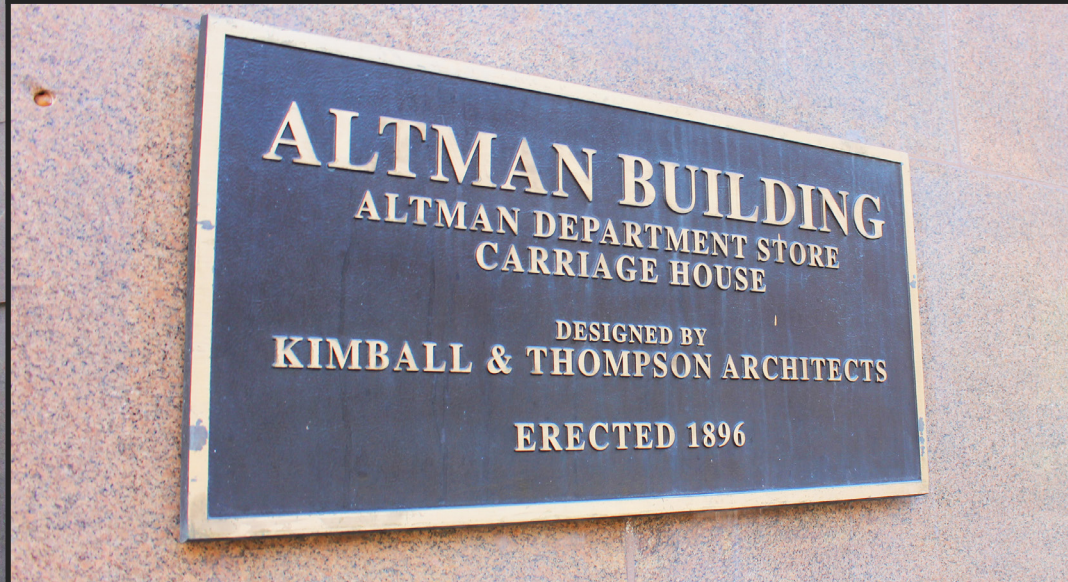


135 WEST 18TH STREET

— THE ALTMAN BUILDING —

ENTIRE 2ND – 5TH FLOORS AVAILABLE
FIRST TIME ON MARKET – RECENTLY RENOVATED ASSET
& GENSLER DESIGNED

12,350 – 50,680 RSF



BUILDING OVERVIEW

Asking Rent: Upon Request

Term: Flexible

Possession: Arranged

Floor Specifics:

- Never Previously Marketed, Renovated and Gensler Designed.
- Prime Chelsea / Flatiron Location.
- Conveniently Located and Accessible.
- Originally Constructed for B. Altman & Company.
- Formerly the Innovation and Collaborative Head Quarters for a Publicly Traded Company.
- State of the Art, Power, Technology, HVAC, and Security.
- Innovation Lab / Collaborative Technology HQ.
- Efficient Side Core.
- ~12,000 + RSF Floor Plates.
- Interconnecting Staircase (ADA Compliant).
- Arched Terracotta Barrel Vaulted Ceilings, Cast Iron & Mushroom Capped Columns, Exposed Brick Throughout.
- Large Windows.
- High Ceilings – 15'+ ft in Penthouse.
- 10,000 SF Additional FAR – for potential Roof Amenity.
- State of the Art Tenant Controlled HVAC.

2ND
FLOOR

12,350
RSF

3RD
FLOOR

12,476
RSF

4TH
FLOOR

12,927
RSF

5TH
FLOOR

12,927
RSF



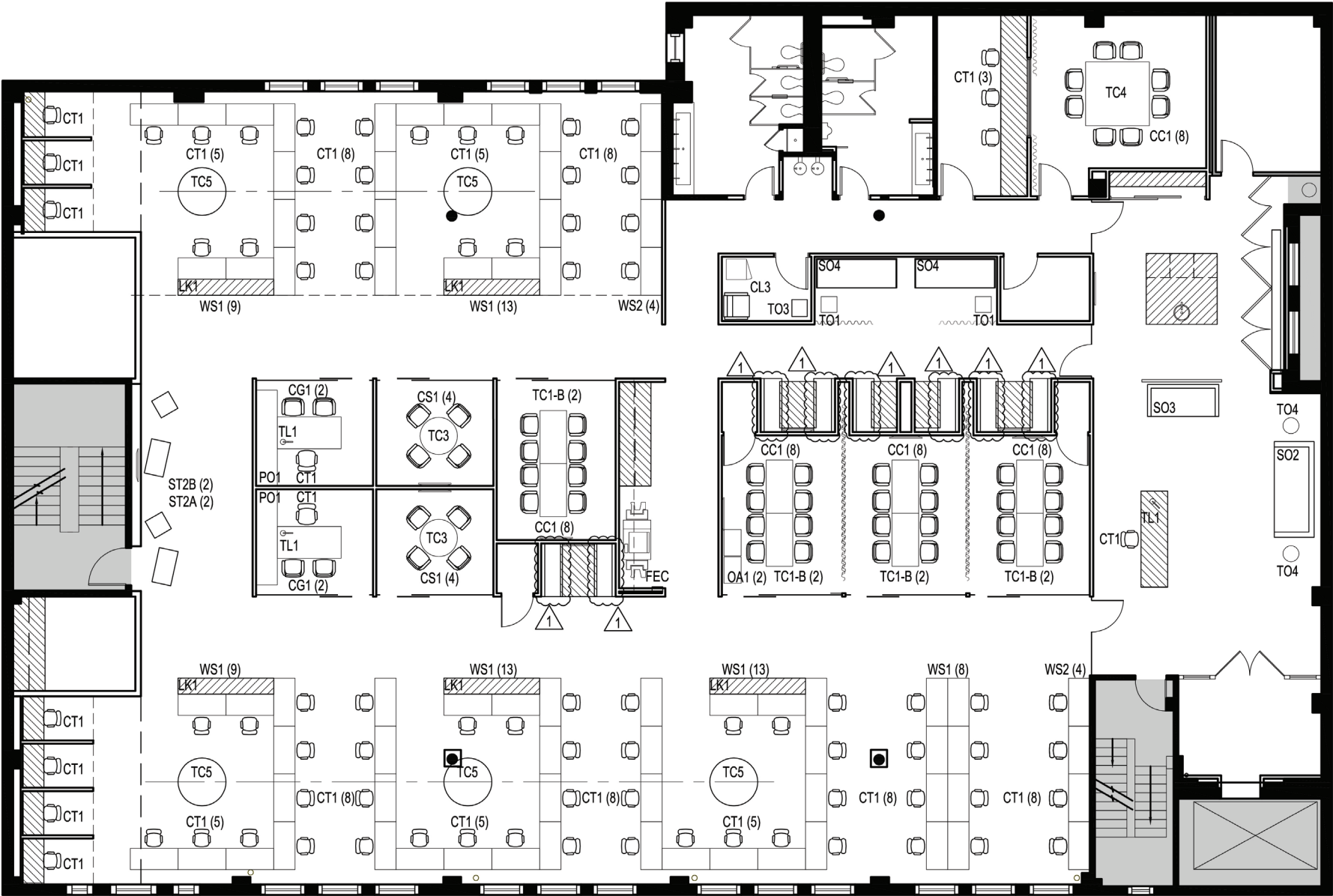


2ND FLOOR | 12,350 RSF

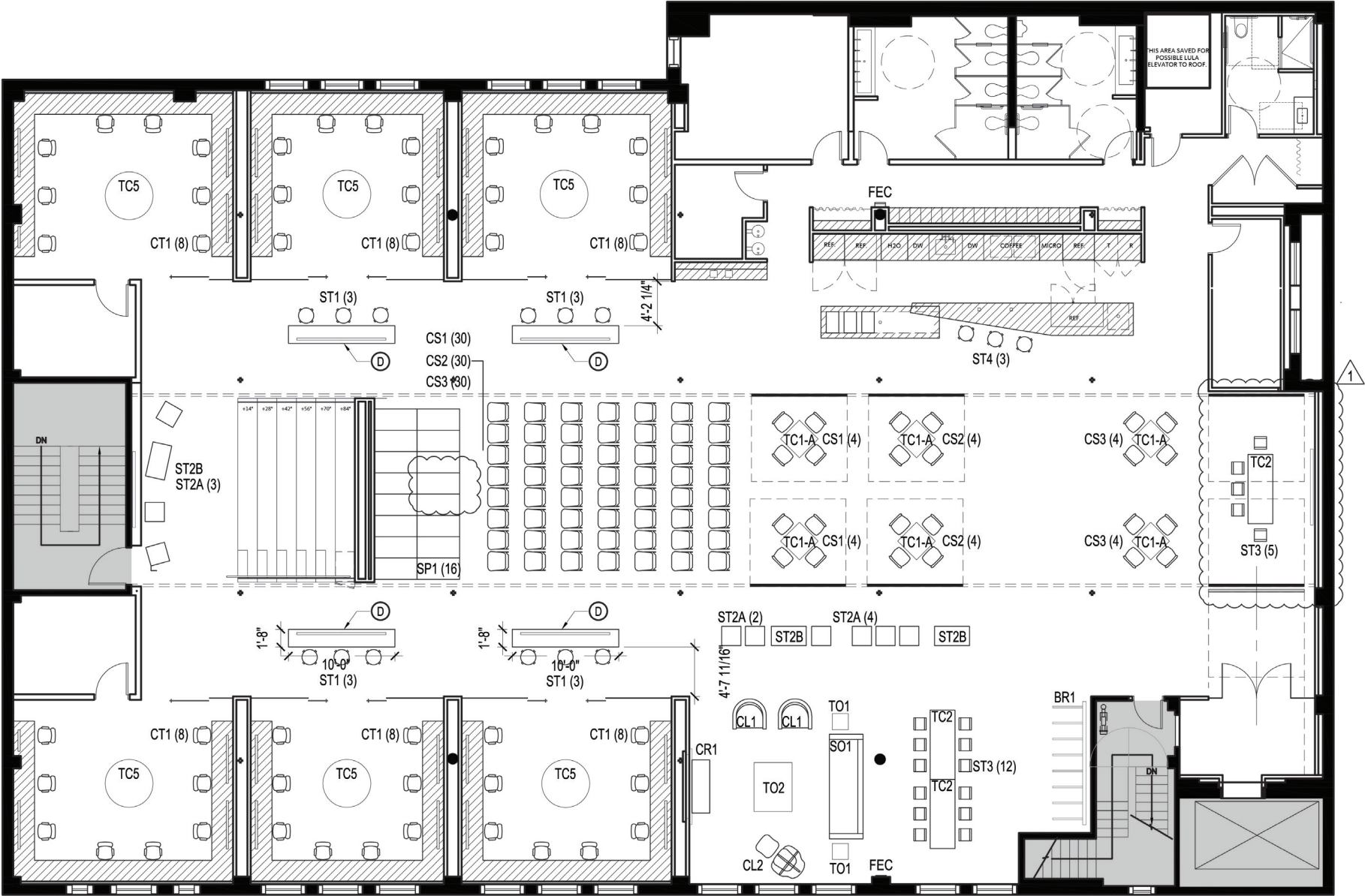


Architectural floor plan of a building floor, showing various rooms, corridors, and furniture. The plan is divided into a grid with columns 1-8 and rows A-G. Rooms include: LAN (3A-3001), MECH (3A-3000), H/VAC UNIT, OPEN COLLABORATION (3C-3000), STAIR B (3E-300-593), STATION (3E-3004, 3E-3003, 3E-3002), TEAM ROOM (3A-3002, 3C-3001, 3C-3002), OPEN AREA (3A-300-302), ENCLOSED WORK AREA (3C-3003, 3C-3004), SMALL CONF./SCRUM (3E-3001, 3E-3000), EXERCISE ROOM (3B-3000), WOMENS (3B-3002), MENS (3B-3003), CONTROL ROOM (3B-3004), UX LAB SMALL ROOM (3B-3006, 3B-3005), ELEC. CLOSET (3B-3008), PANTRY (3C-3008), ELEV. LOBBY (3D-3000), and STAIR A. Furniture includes tables, chairs, bookcases, AV/WRITE CARTS, DISPLAYS, and various equipment. Dimensions are provided for various sections and rooms.

4TH FLOOR: 12,927 RSF



5TH FLOOR: 12,927 RSF



LOCATION OVERVIEW



135 WEST 18TH STREET

