

Executive Office #1
18'-0"x12'-6"

Conference Room #2
17'-7"x13'-8"

Executive Office #2
22'-2"x12'-1"

Open Work Area #1
28'-6"x26'-8"

Private Office #1
9'-0"x12'-2"

Private Office #2
9'-0"x12'-2"

Storage
3'-2"x6'-6"

IT Closet
3'-2"x6'-6"

Meeting Room #1
11'-11"x16'-5"

Reception/
Waiting Area
12'-0"x21'-5"

Conference
Room #1
14'-8"x10'-11"

Lounge Area
13'-5"x12'-5"

Coat Closet
8'-4"x2'-0"

Wellness
Room
7'-5"x6'-4"

Pantry
9'-6"x16'-2"

Open Work Area #3
16'-0"x62'-6"

Open Work Area #2
12'-8"x91'-8"

Phone Booth #1
5'-4"x8'-4"

Private
Office #3
12'-10"x9'-9"

Private
Office #4
12'-10"x9'-9"

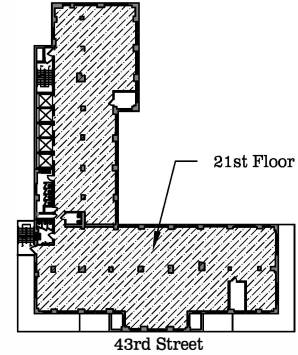
Private
Office #5
12'-10"x9'-9"

Phone Booth #2
5'-4"x8'-4"

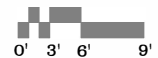
Meeting Room #2
14'-2"x14'-3"

QTY DESCRIPTION

5	Private Office
2	Executive Office
2	Conference Room
2	Meeting Room
1	Reception / Waiting Area
1	Coat Closets
1	Pantry
1	Storage Closet
1	IT Closet
1	Wellness Room
2	Phone Booth
1	Lounge Area
47	Open Work Seats
55	Personnel



KEY PLAN
NTS



28 West 44th Street
21st Floor

12,614 RSF

28w44

CLUB ROW
BUILDING

Test Fit

02/13/2023

NO. 137-01-493