

# 183 Madison Avenue

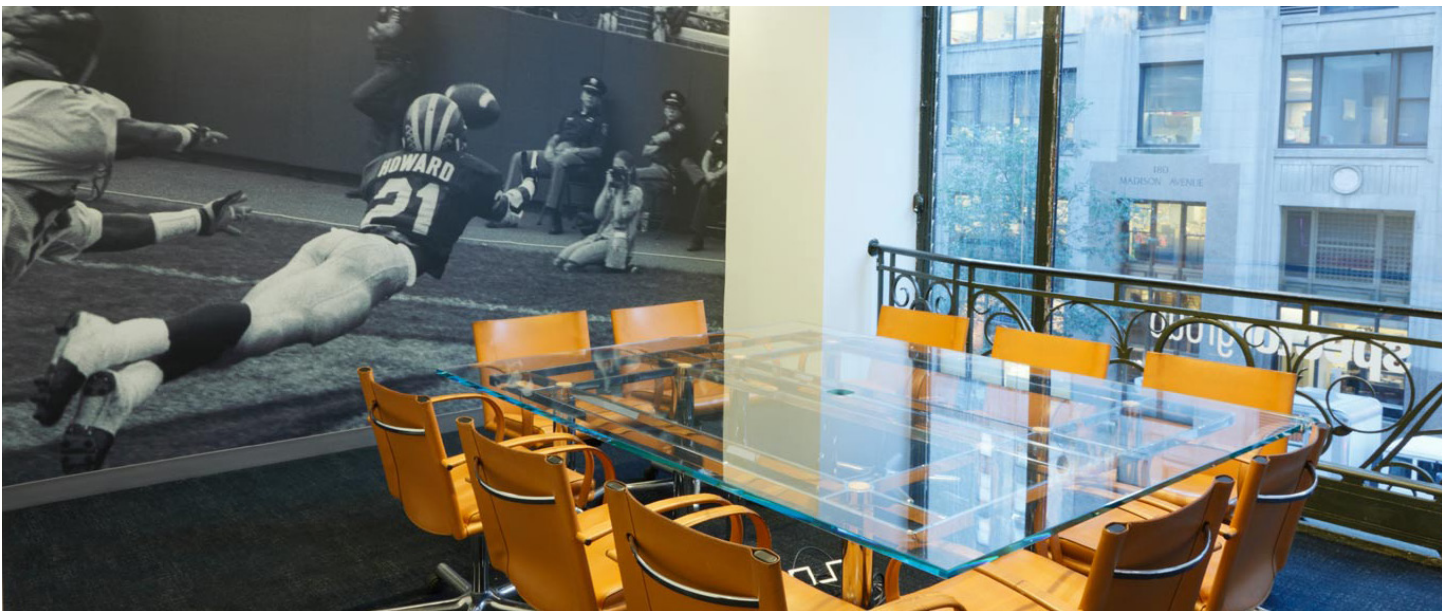


Partial 2<sup>nd</sup> Floor | 12,899 RSF

Type | Direct Lease

Possession | Immediate

Term | Flexible



# Partial 2nd Floor

12,899 RSF

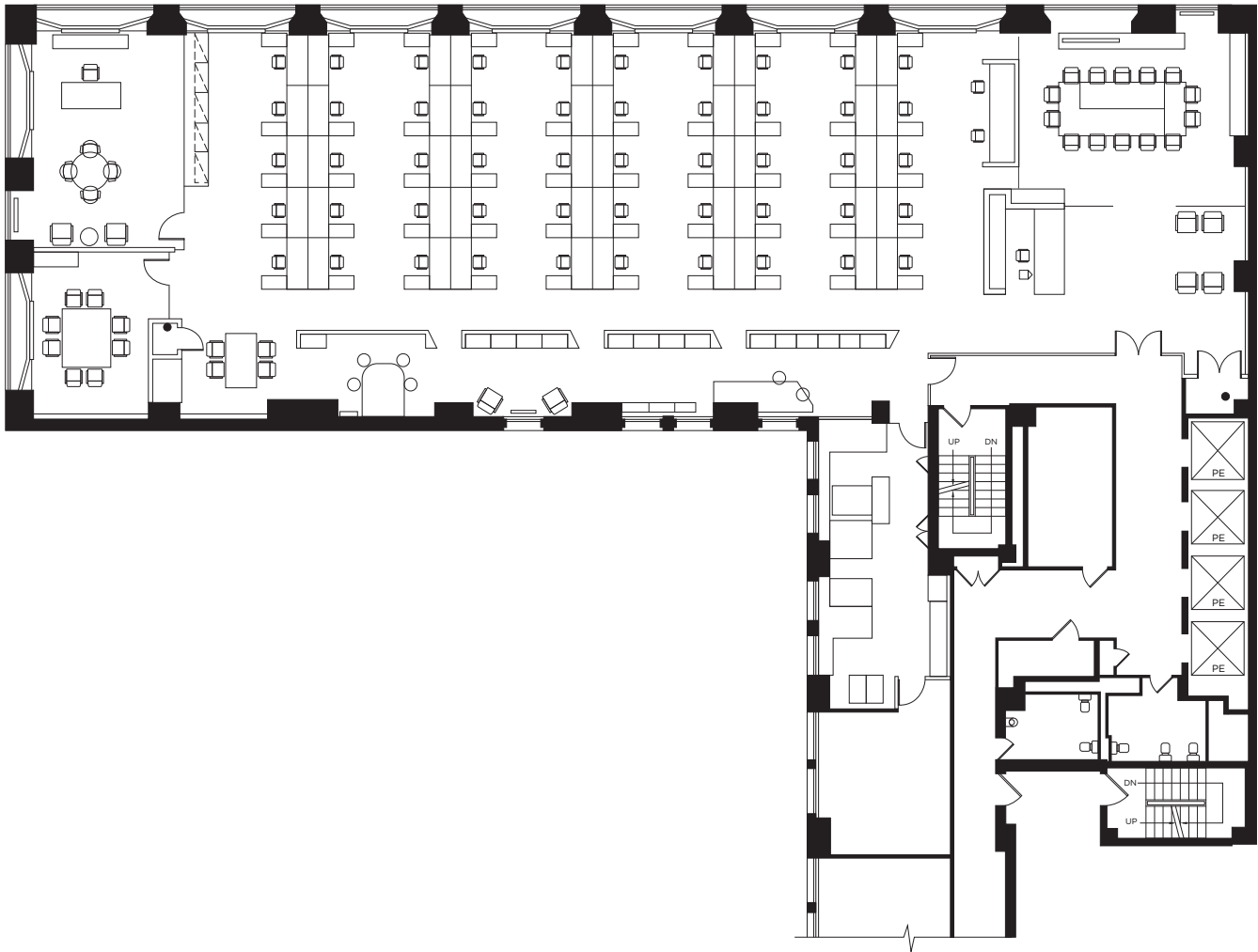
1 Office

55 Person Open Area

Reception

2 Conference Rooms

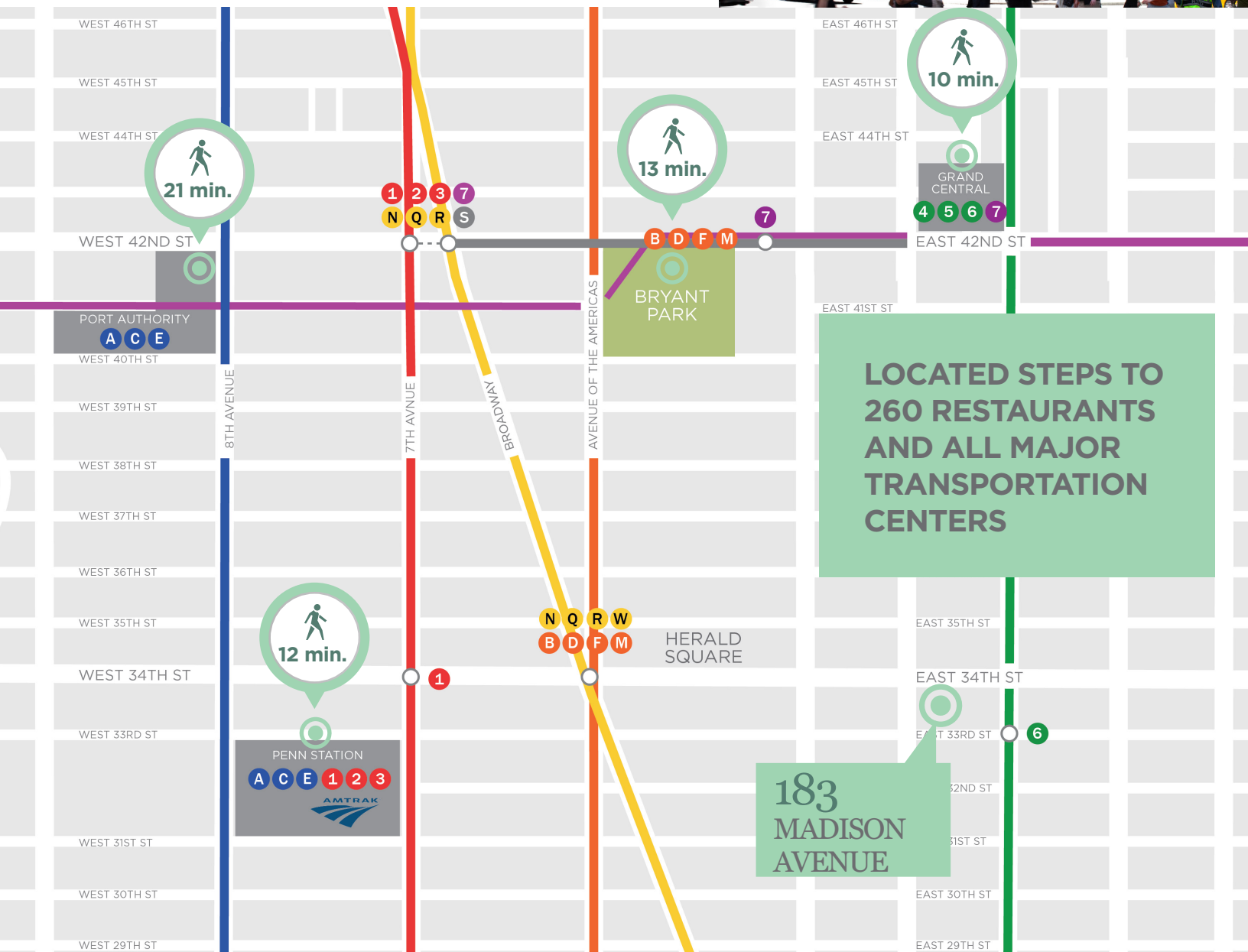
1 Pantry



## Space Features

- High-end plug-and-play creative space
- 12-foot slab height
- Floor to ceiling picture windows
- Walking distance to Madison Square Park
- Conveniently located to Grand Central, Penn Station, and all New York City major subway lines

# Area Map



## Location Details

Conveniently located on the urban oasis of Bryant Park, 500 Fifth Avenue possesses panoramic views of New York City. Major commuter and subway hubs lie in a short walking distance including Grand Central Station, Penn Station and the Port Authority Bus Terminal.



Built in the height of the Art Deco period, 500 Fifth Avenue shares both its designer, Shreve, Lamb & Harmon Associates, and year of construction, 1931, with the Empire State Building. In keeping with modern times, 500 Fifth Avenue is WiredScore platinum rated for its connectivity and Energy Star rated for its commitment to operating efficiently and promoting sustainability.



B D F M N Q R W 6

