



YOUR
SCHOOL
HERE

218
WEST 40TH

You supply the books
We'll supply the bricks

**FOUR FLOORS OF
TURNKEY EDUCATION SPACE
AVAILABLE FOR LEASE**

Direct Access to the 1 2 3 N

Q R W 7 S B D F M

- Zoned and Built for a School
- Private Entrance on 40th Street
- High Ceilings and Abundant Natural Light
- Easily Accessible Midtown South Location between Times Square and Bryant Park
- Close proximity to Port Authority, Grand Central Terminal and Penn Station
- Perfect for a Manhattan or Times Square Satellite Campus



LOCATION

DINING

1. Refinery Rooftop
2. CAVA
3. Shake Shack
4. Mexicue
5. Bryant Park Grill
6. Bryant Park Cafe
7. Wolfgang Steakhouse
8. Koi New York
9. Keens Steakhouse
10. DK Restaurant NYC
11. Frankie & Johnnie's Steakhouse
12. Sweetgreen
13. Luke's Lobster Garment District
14. Dos Toros Taqueria
15. Just Salad
16. Black Iron Burger
17. Pret a Manger
18. Joe's Pizza Broadway
19. Chopt Creative Salad Co.
20. Havana NY
21. Main Noodle House
22. Parker & Quinn
23. La Pecora Bianca Bryant Park
24. Angelina Paris NYC
25. Le Pain Quotidien
26. Mighty Quinn's Barbeque

27. Handcraft Burgers and Brew
28. Beyond Sushi
29. Yard House
30. DIG
31. Artichoke Basille's Pizza
32. Ai Fiori
33. Junior's Restaurant & Bakery
34. Carmine's Italian Restaurant
35. Hard Rock Cafe
36. Au Bon Pain
37. Schnipper's
38. District Tap House
39. Mercato
40. Juniper Bar
41. VERSA
42. District Social
43. Burger & Lobster Bryant Park
44. Virgil's Real BBQ - Times Square
45. Boqueria W40th

FITNESS

1. SoulCycle
2. Blink Fitness
3. Equinox Bryant Park
4. Spirit Lab Yoga
5. 21 Pilates NYC
6. Pilates Reforming New York
7. Planet Fitness
8. The Training Lab
9. Throwback Fitness

10. Orangetheory Fitness
11. Crunch Fitness - 38th Street

RETAIL

1. ZARA
2. Alice + Olivia
3. Macy's
4. The UPS Store
5. Walgreens Pharmacy
6. Burberry
7. Target
8. Staples
9. Whole Foods Market
10. Tommy Hilfiger
11. Bank of America Financial Center
12. Chase Bank
13. FedEx Office Print & Ship Center
14. CVS
15. The Dr. Martens Store
16. LOFT
17. DSW Designer Shoe Warehouse
18. H&M
19. Levi's Store
20. Steve Madden
21. Midtown 38 Wines
22. ROYCE' Chocolate Bryant Park
23. Sugarfina
24. JD Sports
25. Lady M Cake Boutique - NYC
26. TD Bank

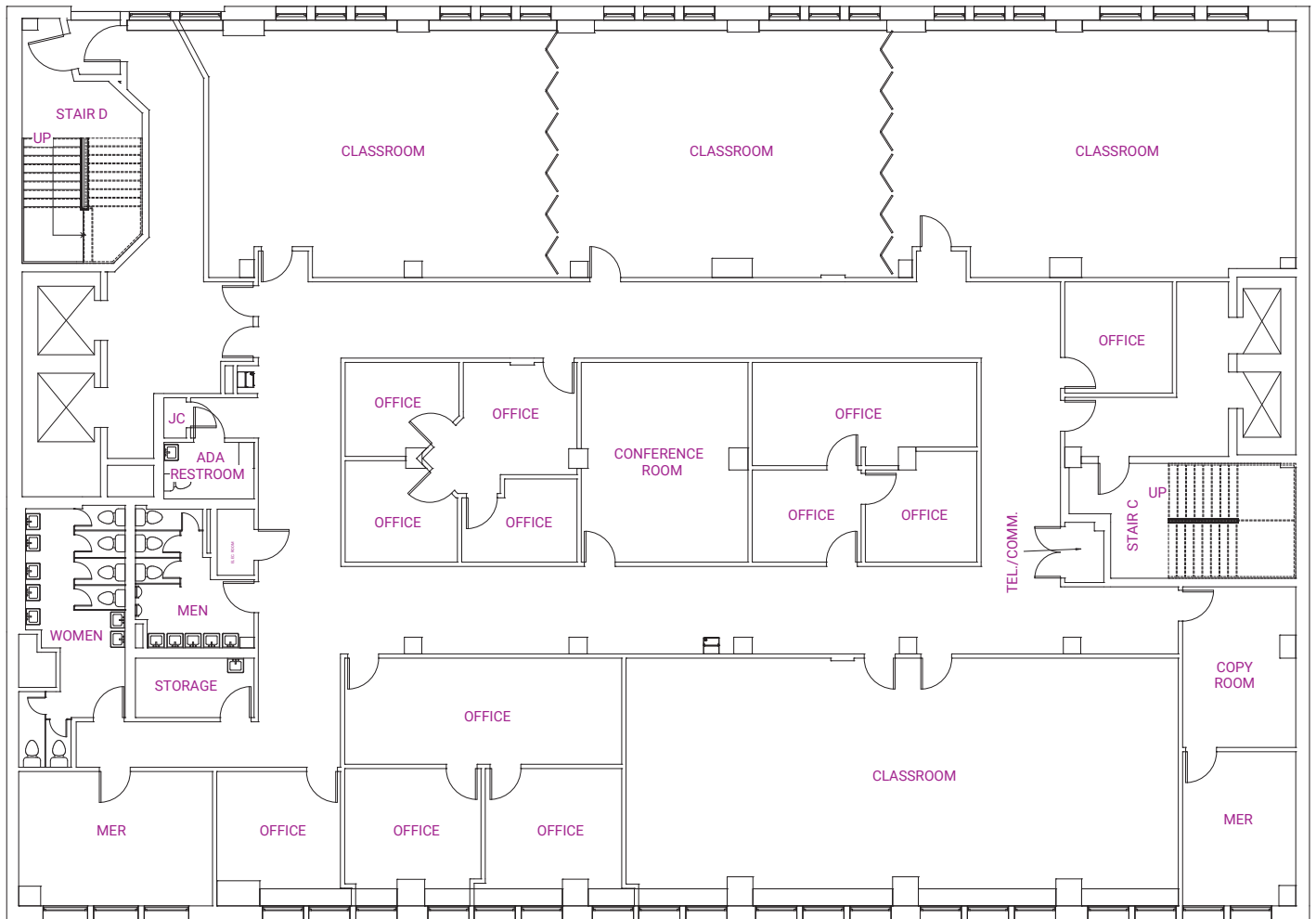
27. GAP

HOTEL

1. The Langham, New York, Fifth Avenue
2. Refinery Hotel
3. The Knickerbocker
4. Hilton Garden Inn New York/West 35th
5. Andaz 5th Avenue - a Concept by Hyatt
6. Wingate by Wyndham NYC Midtown
7. Embassy Suites by Hilton New York
8. Archer Hotel New York
9. Park Terrace Hotel
10. Hotel Hendricks
11. Margaritaville Resort Times Square
12. Hyatt Place New York/Midtown-South
13. Executive Hotel Le Soleil New York
14. The Draper, Ascend Hotel Collection
15. LUMA Hotel Times Square
16. The New Yorker Hotel
17. Moxy NYC Times Square
18. AC Hotel New York Times Square
19. SpringHill Suites by Marriott NYC
20. Marriott Vacation Club Pulse, NYC
21. Renaissance New York Midtown Hotel
22. EVEN Hotel New York - Times Square, IHG
23. The Chatwal, a Luxury Collection Hotel
24. Hotel Mela Times Square
25. Millennium Hotel Broadway Times Square
26. Arlo Midtown



Floor 3: 13,900 RSF



WELCOME

PHYSICIAN ASSISTANT PROGRAM
MANHATTAN

CLASS
of
2025



EXIT

311



A dark wood desk with a grey office chair tucked under it, positioned in the foreground on the left side of the room.

A black, adjustable medical table with a mannequin lying on it, positioned in the center of the room.

Multiple rows of white plastic chairs with attached wooden desks, arranged in a classroom layout on the right side of the room.

Tables covered with blue tablecloths, located in the background on the right side of the room.

A whiteboard on a stand, located on the far right wall of the room.

Imma let you finish but PA's have the best job OF ALLTIME



EXIT
CALL





Shaquana Benjamin

TOURO COLLEGE
SOCIAL DISTANCE
GUIDELINES











EXXAT Patient Logs

DATE	PATIENT NAME	LOGS
10/1/2022	JACOBSON, JACOB	...
10/2/2022	JACOBSON, JACOB	...
10/3/2022	JACOBSON, JACOB	...
10/4/2022	JACOBSON, JACOB	...
10/5/2022	JACOBSON, JACOB	...
10/6/2022	JACOBSON, JACOB	...
10/7/2022	JACOBSON, JACOB	...
10/8/2022	JACOBSON, JACOB	...
10/9/2022	JACOBSON, JACOB	...
10/10/2022	JACOBSON, JACOB	...
10/11/2022	JACOBSON, JACOB	...
10/12/2022	JACOBSON, JACOB	...
10/13/2022	JACOBSON, JACOB	...
10/14/2022	JACOBSON, JACOB	...
10/15/2022	JACOBSON, JACOB	...
10/16/2022	JACOBSON, JACOB	...
10/17/2022	JACOBSON, JACOB	...
10/18/2022	JACOBSON, JACOB	...
10/19/2022	JACOBSON, JACOB	...
10/20/2022	JACOBSON, JACOB	...
10/21/2022	JACOBSON, JACOB	...
10/22/2022	JACOBSON, JACOB	...
10/23/2022	JACOBSON, JACOB	...
10/24/2022	JACOBSON, JACOB	...
10/25/2022	JACOBSON, JACOB	...
10/26/2022	JACOBSON, JACOB	...
10/27/2022	JACOBSON, JACOB	...
10/28/2022	JACOBSON, JACOB	...
10/29/2022	JACOBSON, JACOB	...
10/30/2022	JACOBSON, JACOB	...
10/31/2022	JACOBSON, JACOB	...

JACOBS







EXIT

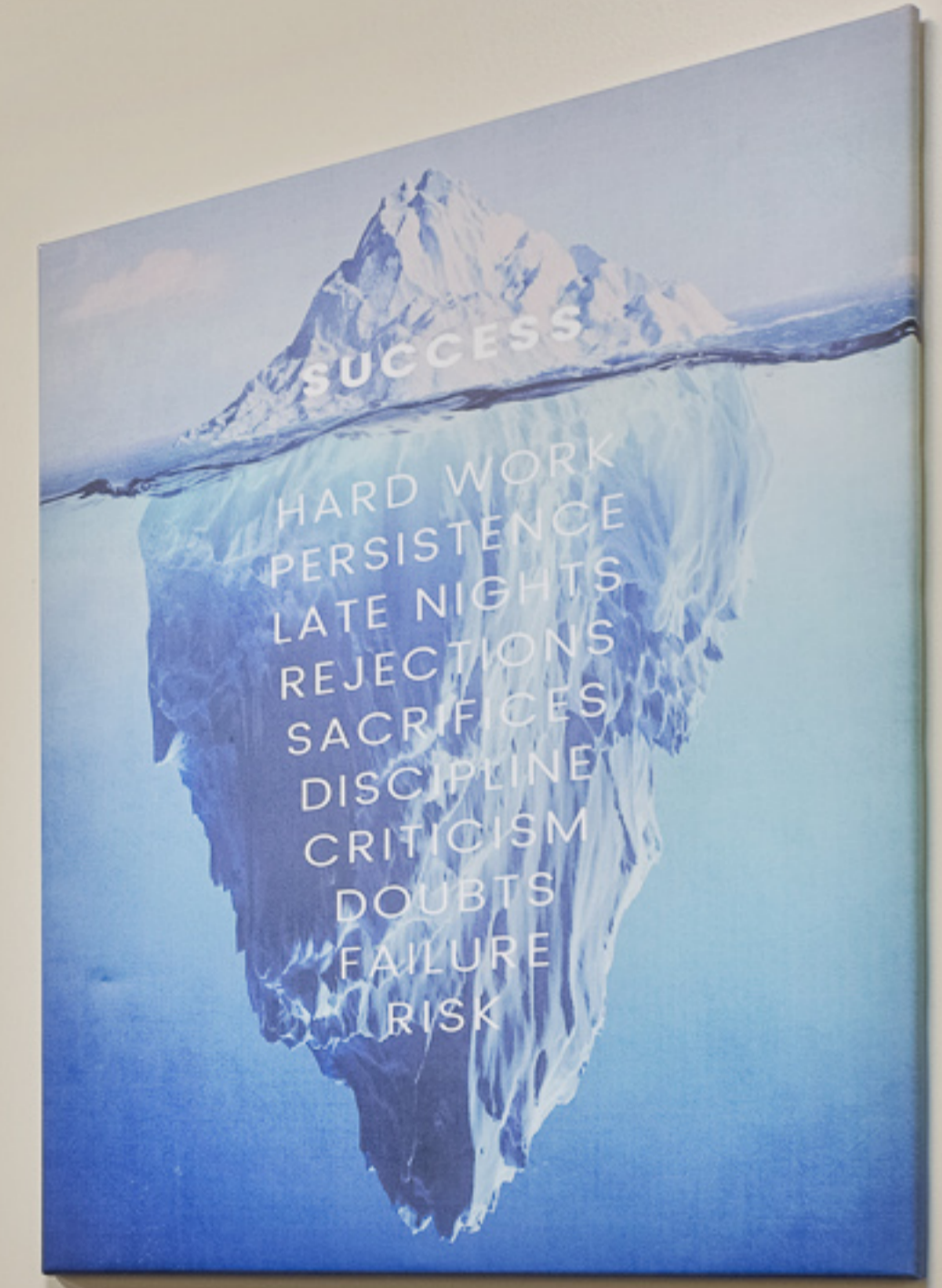
301

PHYSICIAN ASSISTANT PROGRAM
MANHATTAN

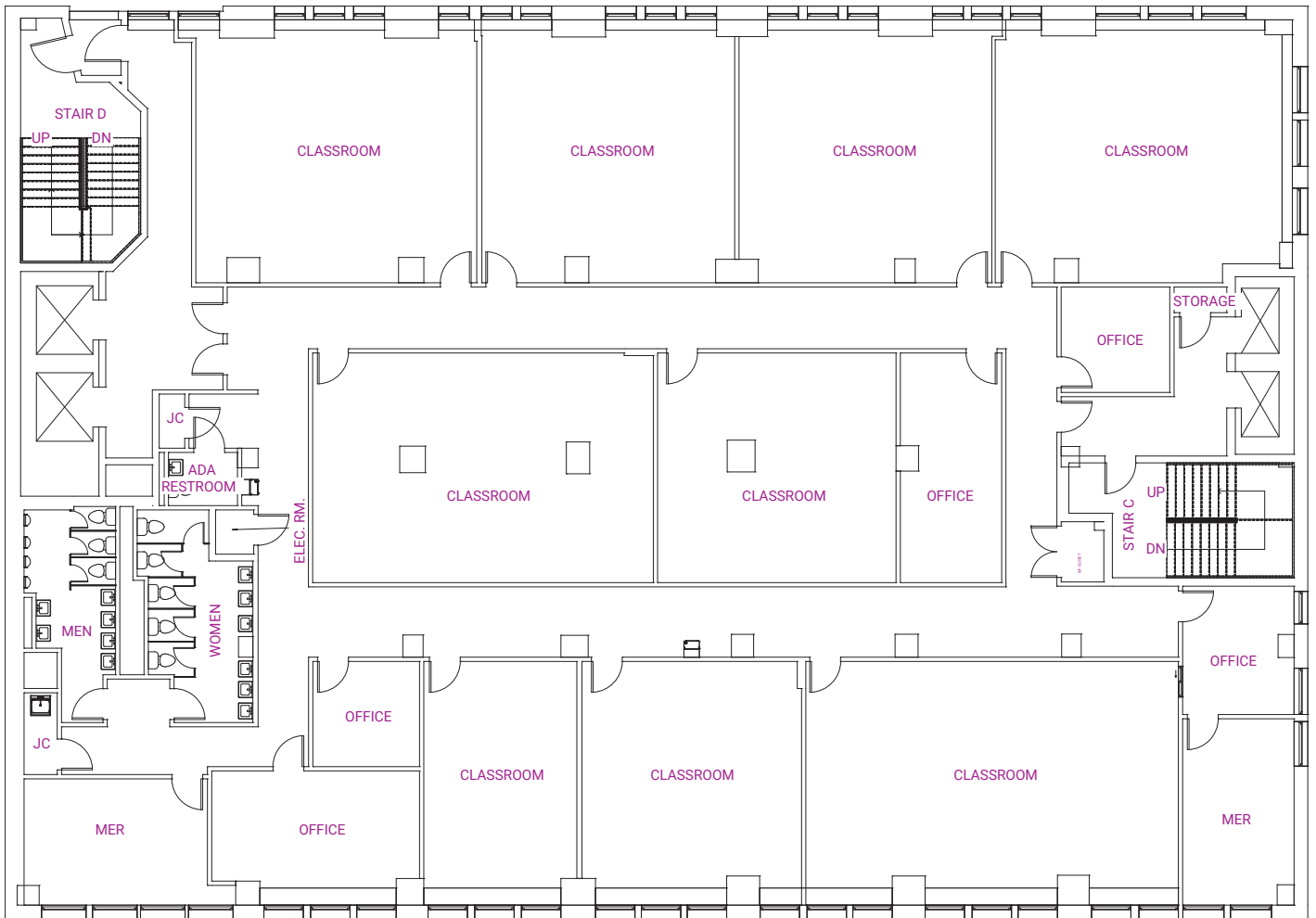
CLINICAL YEAR

This is a TCUS Print environment
TCUSPRINTTOURO.EDU
PRINT, SCAN, COPY

Print from Computer Labs & Your Devices
IOS Android Windows MacOS Chrome



Floor 4: 13,900 RSF





EXIT

TORONTO COLLEGE
GRADUATE SCHOOL OF EDUCATION



401-406
←

403

4
NO SMOKING OR OPEN FLAMES
PLEASE KEEP FIRE EXTINGUISHERS
EASILY ACCESSIBLE

EXIT



TOURO COLLEGE

MARK GRADUATE







TOURO COLLEGE
Where Knowledge and Values Meet

MARK GRADUATE
JOURNALISM



Food or Drinks Allowed



410

COMPUTER LAB

No printing during class.
Please do not interrupt
Thank You

Tech-Savvy Teaching

Earn a Master's Degree in
Instructional Technology

877-669-7227

info.tj@tours.edu

www.tj.edu/gstip

www.tj.edu/gstip

www.tj.edu/gstip

www.tj.edu/gstip

www.tj.edu/gstip

www.tj.edu/gstip

www.tj.edu/gstip

www.tj.edu/gstip

www.tj.edu/gstip

www.tj.edu/gstip

www.tj.edu/gstip

www.tj.edu/gstip

www.tj.edu/gstip

www.tj.edu/gstip

www.tj.edu/gstip

www.tj.edu/gstip

www.tj.edu/gstip

www.tj.edu/gstip

www.tj.edu/gstip

www.tj.edu/gstip

www.tj.edu/gstip

www.tj.edu/gstip

www.tj.edu/gstip

www.tj.edu/gstip

www.tj.edu/gstip

www.tj.edu/gstip

www.tj.edu/gstip

www.tj.edu/gstip

www.tj.edu/gstip

www.tj.edu/gstip

www.tj.edu/gstip

www.tj.edu/gstip

www.tj.edu/gstip

www.tj.edu/gstip

www.tj.edu/gstip

www.tj.edu/gstip

www.tj.edu/gstip

www.tj.edu/gstip

www.tj.edu/gstip

www.tj.edu/gstip

www.tj.edu/gstip

www.tj.edu/gstip

www.tj.edu/gstip

www.tj.edu/gstip

www.tj.edu/gstip

www.tj.edu/gstip

www.tj.edu/gstip

www.tj.edu/gstip

www.tj.edu/gstip

www.tj.edu/gstip

www.tj.edu/gstip

www.tj.edu/gstip

www.tj.edu/gstip

www.tj.edu/gstip

www.tj.edu/gstip

www.tj.edu/gstip

www.tj.edu/gstip

www.tj.edu/gstip

www.tj.edu/gstip

www.tj.edu/gstip

www.tj.edu/gstip

www.tj.edu/gstip

www.tj.edu/gstip

www.tj.edu/gstip

www.tj.edu/gstip

www.tj.edu/gstip

www.tj.edu/gstip

www.tj.edu/gstip

TC TOWSON COLLEGE
GRADUATE SCHOOL OF TECHNOLOGY

EXIT





TOURO COLLEGE
Where Knowledge and Values Meet



LEXMARK
24015SA
univer
WANT TO KEEP IT TOGETHER?

GEWARTZ

LEXMARK

DR. R. S.

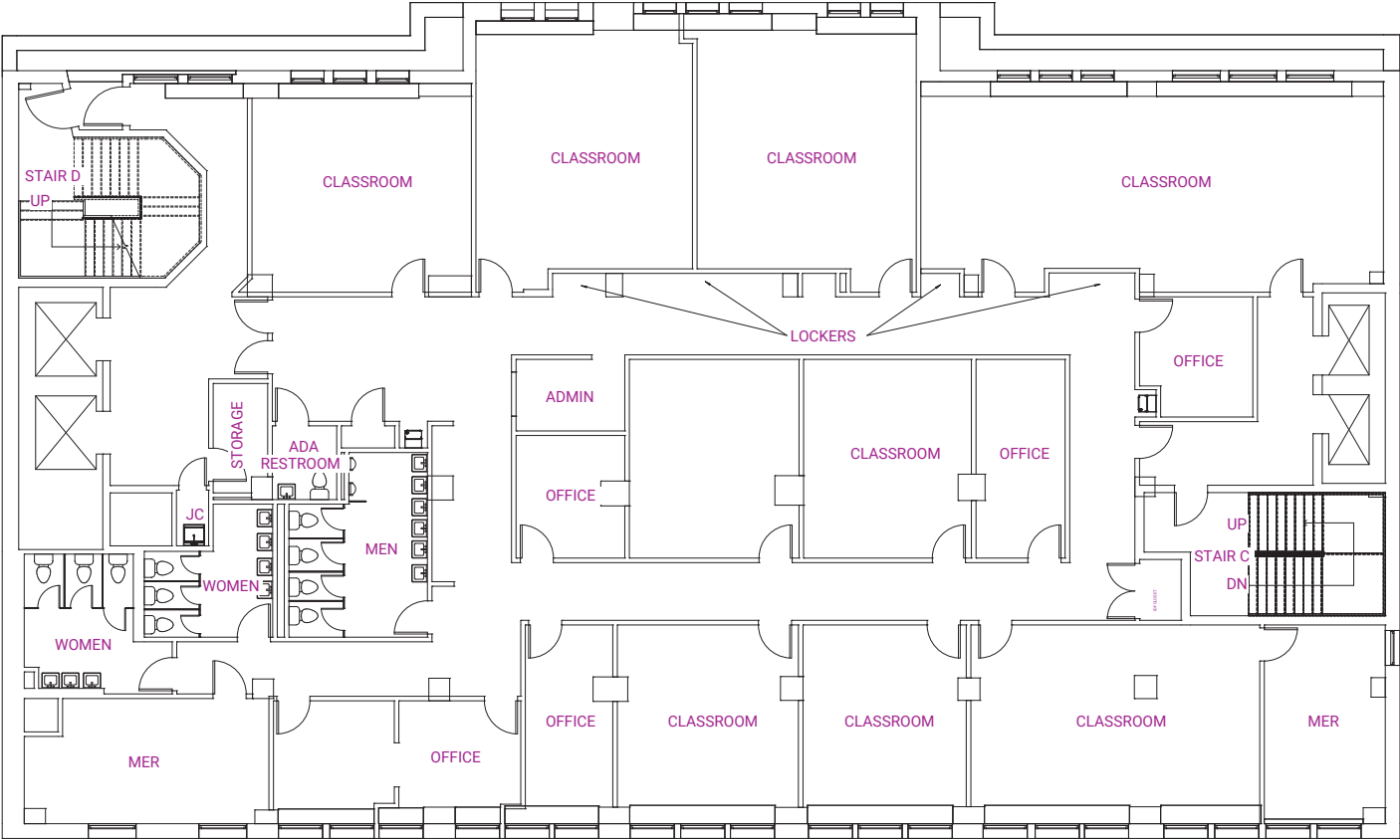


EXIT



EXIT

Floor 11: 11,000 RSF





WELCOME TO THE
GRADUATE SCHOOL OF BUSINESS

LET US
HELP YOU

RESTROOMS
→

EXIT







ERICA WILSON

11-003

Charles J. Proh

Dana Dye

11-002

11-004

Ellen Lab

EXIT







1111



811

112



EXIT





1100A

Electrical outlets with cables plugged in.







LET US HELP YOU!

CAREER SERVICES CENTER

CAREER RESOURCE CENTER

CAREER DEVELOPMENT CENTER

CAREER ASSISTANCE CENTER

CAREER SUPPORT CENTER

CAREER COUNSELING CENTER

CAREER PLACEMENT CENTER

CAREER TRAINING CENTER

CAREER EVALUATION CENTER

CAREER RESEARCH CENTER

CAREER NETWORKING CENTER

CAREER INTERVIEW CENTER

CAREER REFERENCE CENTER

CAREER INFORMATION CENTER

CAREER EDUCATION CENTER

CAREER SKILLS CENTER

CAREER EXPERIENCE CENTER

CAREER CONNECTION CENTER

CAREER OPPORTUNITY CENTER

CAREER INSPIRATION CENTER

CAREER MOTIVATION CENTER

CAREER ENCOURAGEMENT CENTER

CAREER SUPPORTIVE CENTER

CAREER ASSISTIVE CENTER

CAREER GUIDANCE CENTER

CAREER COUNSELING CENTER

CAREER PLACEMENT CENTER

CAREER TRAINING CENTER

CAREER EVALUATION CENTER

CAREER RESEARCH CENTER

CAREER NETWORKING CENTER

CAREER INTERVIEW CENTER

CAREER REFERENCE CENTER

CAREER INFORMATION CENTER

CAREER EDUCATION CENTER

CAREER SKILLS CENTER

CAREER EXPERIENCE CENTER

CAREER CONNECTION CENTER

CAREER OPPORTUNITY CENTER

CAREER INSPIRATION CENTER

CAREER MOTIVATION CENTER

CAREER ENCOURAGEMENT CENTER

CAREER SUPPORTIVE CENTER

CAREER ASSISTIVE CENTER

CAREER GUIDANCE CENTER

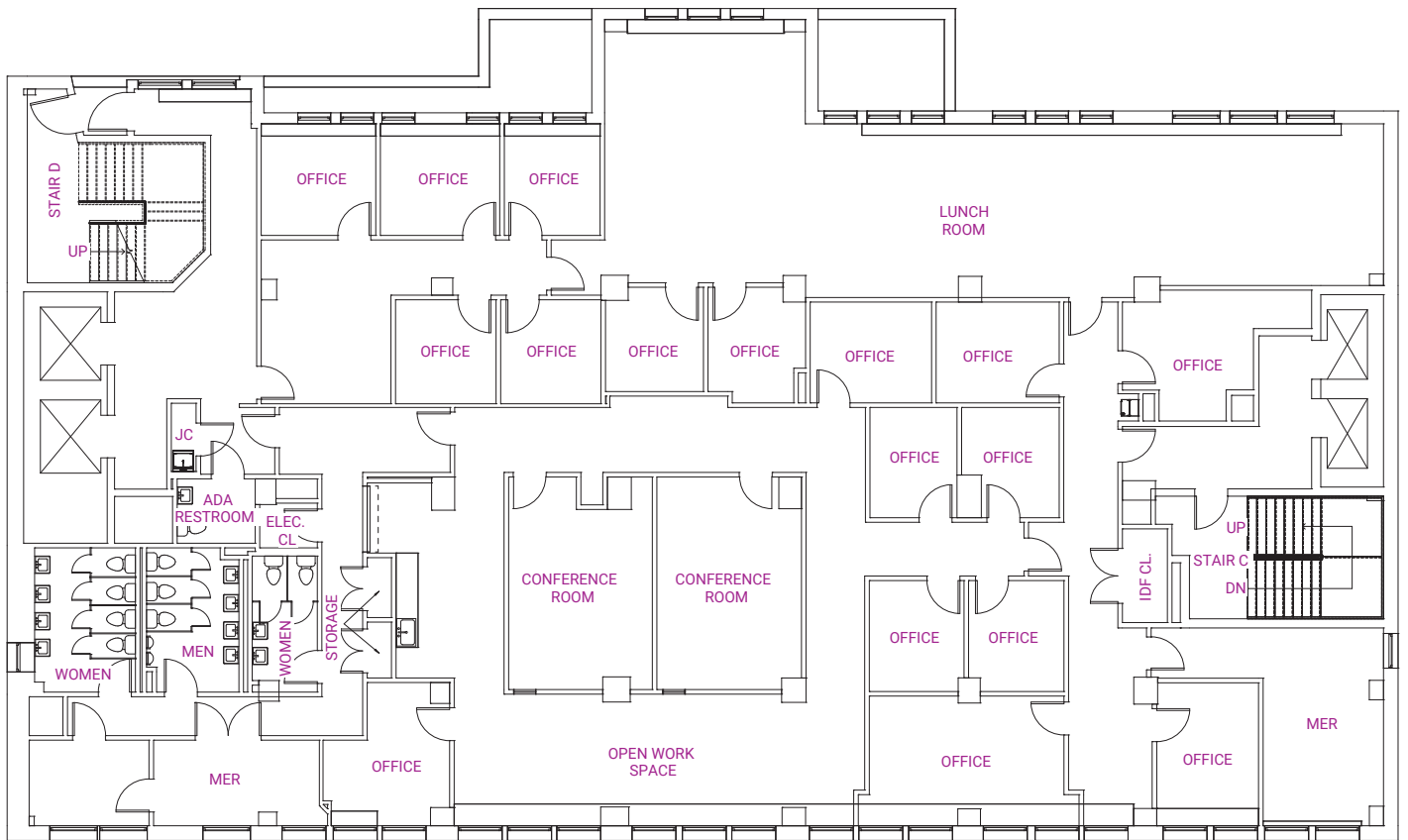
1115

HANDOUTS FOR YOU!

EXIT



Floor 12: 10,500 RSF





12



TOURO COLLEGE

EXIT



Don't try
to change
yourself
change your
environment
- BENJAMIN FRANKLIN



1302

1301







EXIT

Earn Your
2nd Salary Difference!



EXIT



YOUR
SOWS
YOUR
REAP

RESEARCH

1011
1012
1013
1014
1015
1016
1017
1018
1019
1020
1021
1022
1023
1024
1025
1026
1027
1028
1029
1030
1031
1032
1033
1034
1035
1036
1037
1038
1039
1040
1041
1042
1043
1044
1045
1046
1047
1048
1049
1050
1051
1052
1053
1054
1055
1056
1057
1058
1059
1060
1061
1062
1063
1064
1065
1066
1067
1068
1069
1070
1071
1072
1073
1074
1075
1076
1077
1078
1079
1080
1081
1082
1083
1084
1085
1086
1087
1088
1089
1090
1091
1092
1093
1094
1095
1096
1097
1098
1099
1100
1101
1102
1103
1104
1105
1106
1107
1108
1109
1110
1111
1112
1113
1114
1115
1116
1117
1118
1119
1120
1121
1122
1123
1124
1125
1126
1127
1128
1129
1130
1131
1132
1133
1134
1135
1136
1137
1138
1139
1140
1141
1142
1143
1144
1145
1146
1147
1148
1149
1150
1151
1152
1153
1154
1155
1156
1157
1158
1159
1160
1161
1162
1163
1164
1165
1166
1167
1168
1169
1170
1171
1172
1173
1174
1175
1176
1177
1178
1179
1180
1181
1182
1183
1184
1185
1186
1187
1188
1189
1190
1191
1192
1193
1194
1195
1196
1197
1198
1199
1200
1201
1202
1203
1204
1205
1206
1207
1208
1209
1210
1211
1212
1213
1214
1215
1216
1217
1218
1219
1220
1221
1222
1223
1224
1225
1226
1227
1228
1229
1230
1231
1232
1233
1234
1235
1236
1237
1238
1239
1240
1241
1242
1243
1244
1245
1246
1247
1248
1249
1250
1251
1252
1253
1254
1255
1256
1257
1258
1259
1260
1261
1262
1263
1264
1265
1266
1267
1268
1269
1270
1271
1272
1273
1274
1275
1276
1277
1278
1279
1280
1281
1282
1283
1284
1285
1286
1287
1288
1289
1290
1291
1292
1293
1294
1295
1296
1297
1298
1299
1300
1301
1302
1303
1304
1305
1306
1307
1308
1309
1310
1311
1312
1313
1314
1315
1316
1317
1318
1319
1320
1321
1322
1323
1324
1325
1326
1327
1328
1329
1330
1331
1332
1333
1334
1335
1336
1337
1338
1339
1340
1341
1342
1343
1344
1345
1346
1347
1348
1349
1350
1351
1352
1353
1354
1355
1356
1357
1358
1359
1360
1361
1362
1363
1364
1365
1366
1367
1368
1369
1370
1371
1372
1373
1374
1375
1376
1377
1378
1379
1380
1381
1382
1383
1384
1385
1386
1387
1388
1389
1390
1391
1392
1393
1394
1395
1396
1397
1398
1399
1400
1401
1402
1403
1404
1405
1406
1407
1408
1409
1410
1411
1412
1413
1414
1415
1416
1417
1418
1419
1420
1421
1422
1423
1424
1425
1426
1427
1428
1429
1430
1431
1432
1433
1434
1435
1436
1437
1438
1439
1440
1441
1442
1443
1444
1445
1446
1447
1448
1449
1450
1451
1452
1453
1454
1455
1456
1457
1458
1459
1460
1461
1462
1463
1464
1465
1466
1467
1468
1469
1470
1471
1472
1473
1474
1475
1476
1477
1478
1479
1480
1481
1482
1483
1484
1485
1486
1487
1488
1489
1490
1491
1492
1493
1494
1495
1496
1497
1498
1499
1500

EXIT











STOP SEXUAL HARASSMENT ACT NOTICE

NYC

21st Century Family Research Report
Light Your Research Fire

Are you or a loved one using E-cigarettes (or vaping)?

Are you or a loved one using E-cigarettes (or vaping)?

