

200  
PARK AVENUE

PARTIAL  
14<sup>TH</sup> FLOOR  
14,329 RSF



PARTIAL 14<sup>TH</sup> FLOOR

14,329 RSF

POSSESSION: IMMEDIATE TERM:

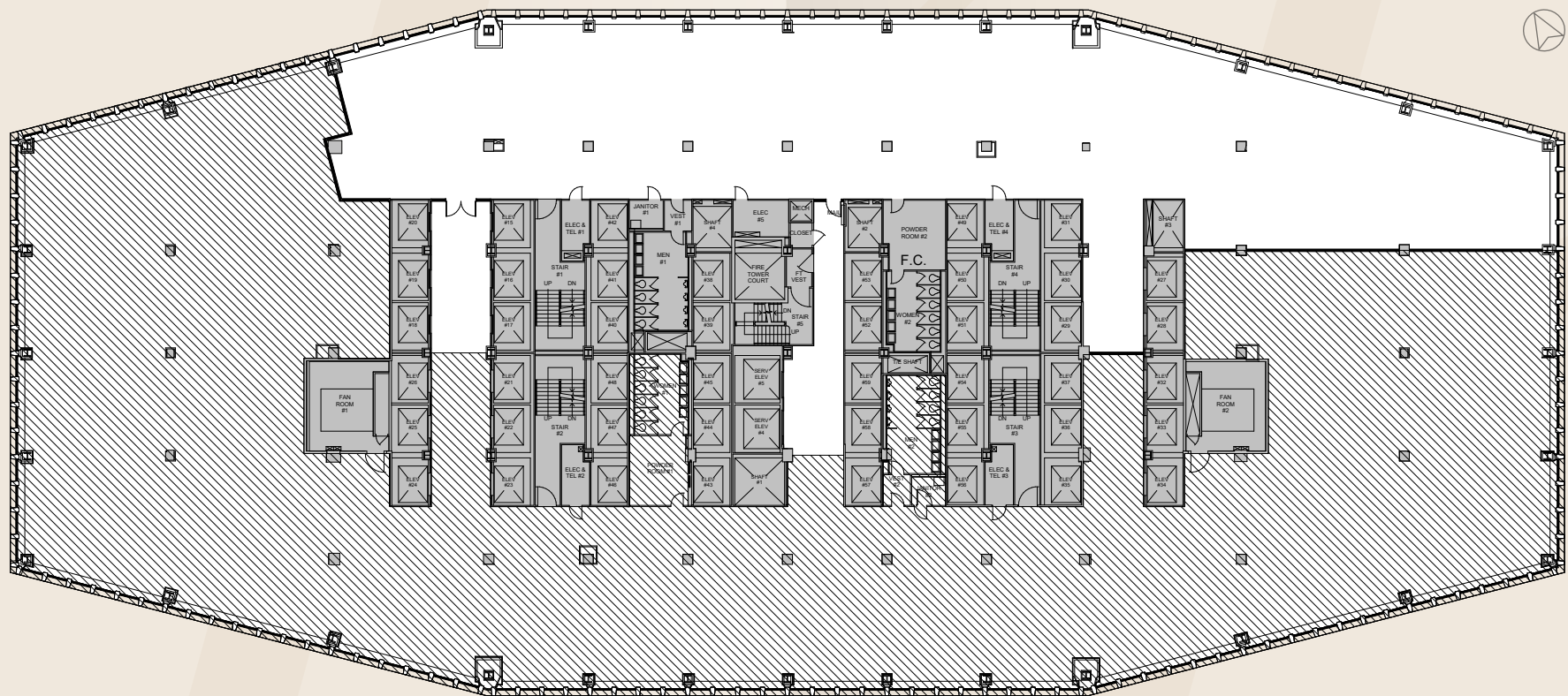
JULY 30<sup>TH</sup>, 2030

VANDERBILT AVENUE

48TH STREET

PARK AVENUE

GRAND CENTRAL TERMINAL





# WORKPLACE

Prime location in the heart of Midtown East's prestigious office market between Grand Central Terminal and East 45th Street with adjacent 4-level parking.



# AMENITIES

- On-site amenities include: a state-of-the-art health club dedicated to 200 Park tenants, fine restaurants, shops, a contingent childcare facility and banking services.
- Steps away from Midtown's best hotels, restaurants, and shopping
- Direct access to Grand Central and minutes from the United Nations, Times Square, and Madison Square Garden



# ACCESS

Walk directly from your train into 200 Park Avenue without worrying about the weather.

Grand Central is the only commuter hub connecting you to Long Island, Westchester, and Connecticut through the Metro-North Railroad and LIRR.

**750K**

Daily visitors

**45**

Train platforms

**38min**

to White Plains  
Westchester

**37min**

to Long Island  
North Shore

**24min**

to One World  
Trade Center

**6min**

to Hudson  
Yards

