

# 423

# W55TH

**OFFICE AND  
RETAIL SPACES**

**AVAILABLE IN MIDTOWN WEST**





# SPACE DETAILS

## AVAILABILITIES

**Partial Ground**      14,593 RSF   -   Office or Retail

## POSSESSION

Immediate

## TERM

Negotiable

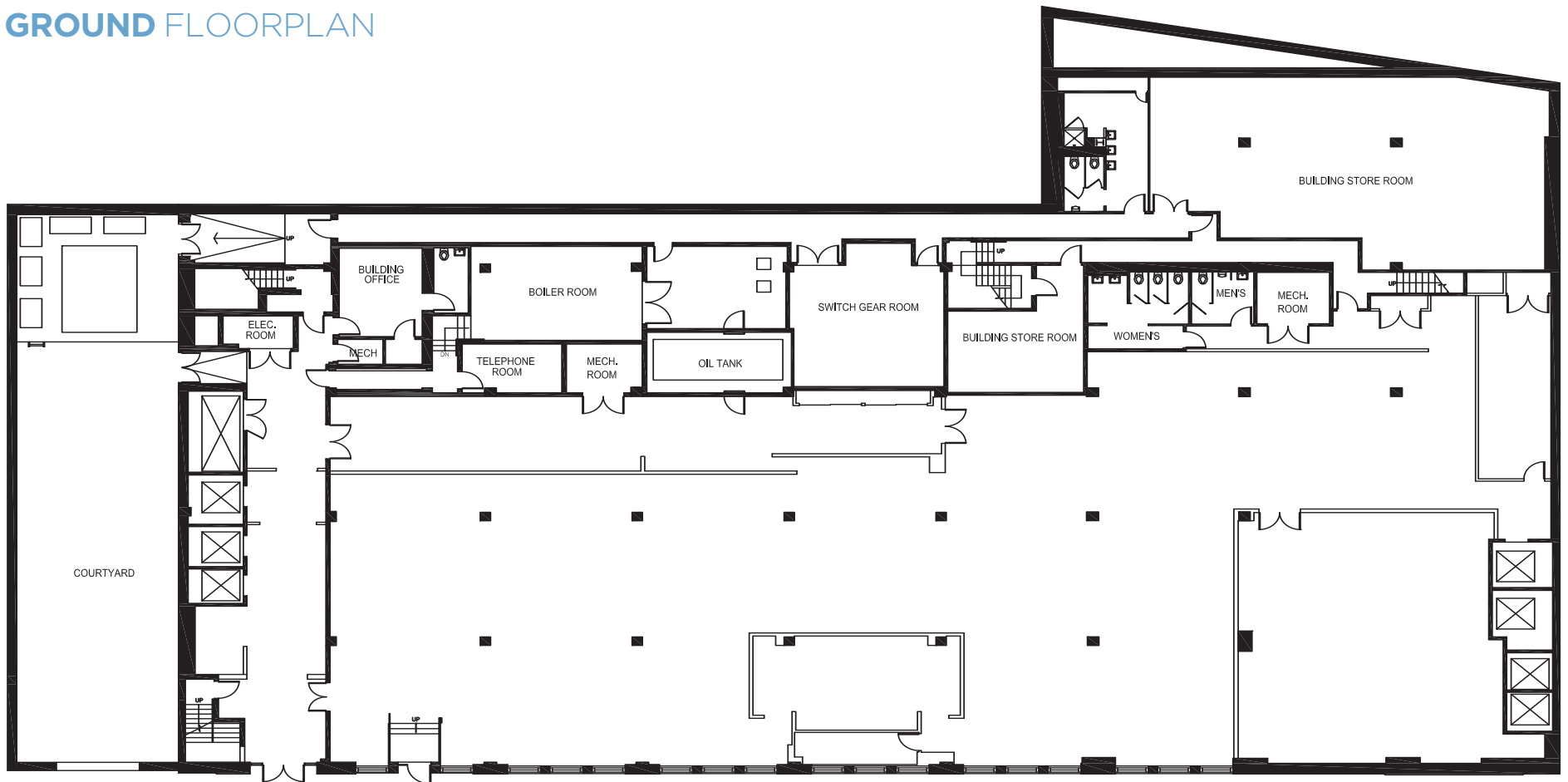
## COMMENTS

- Ground floor can be leased for retail or office
- Upper floors for office use
- Potential private entrance for large tenant



# FLOOR PLANS

## GROUND FLOORPLAN





# MIDTOWN WEST



**22K  
RESIDENTS**

within a  
10 minute walk

**65K  
EMPLOYEES**

within a  
10 minute walk

**7 MINUTE  
WALK TO**

the Time Warner Center  
at Columbus Circle

**10 MINUTE  
WALK TO**

Lincoln  
Center

**15 MINUTE  
WALK TO**

Times  
Square

**16M ANNUAL  
VISITORS TO**

the Time  
Warner Center

**6.5M ANNUAL  
VISITORS TO**

to Lincoln  
Center





# 423 W55TH

