

535 Madison

EXQUISITELY BUILT AND FURNISHED SUBLEASE
TROPHY BUILDING



Space Highlights

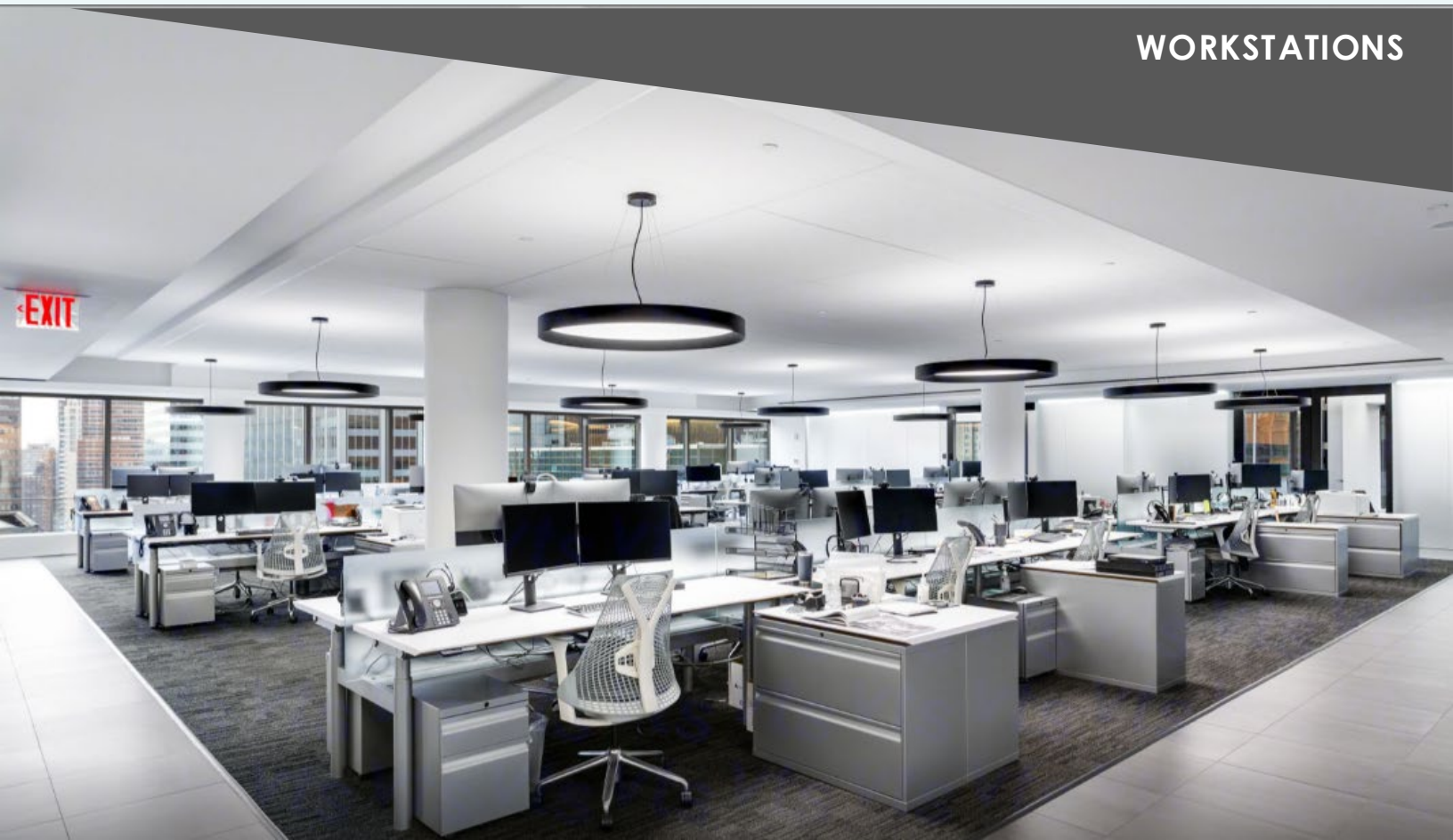
- Entire floor 24 and/or 25
- 14,765 RSF or 29,530 RSF
- Sublease Term to March 2030
- Immediate possession

Building Highlights

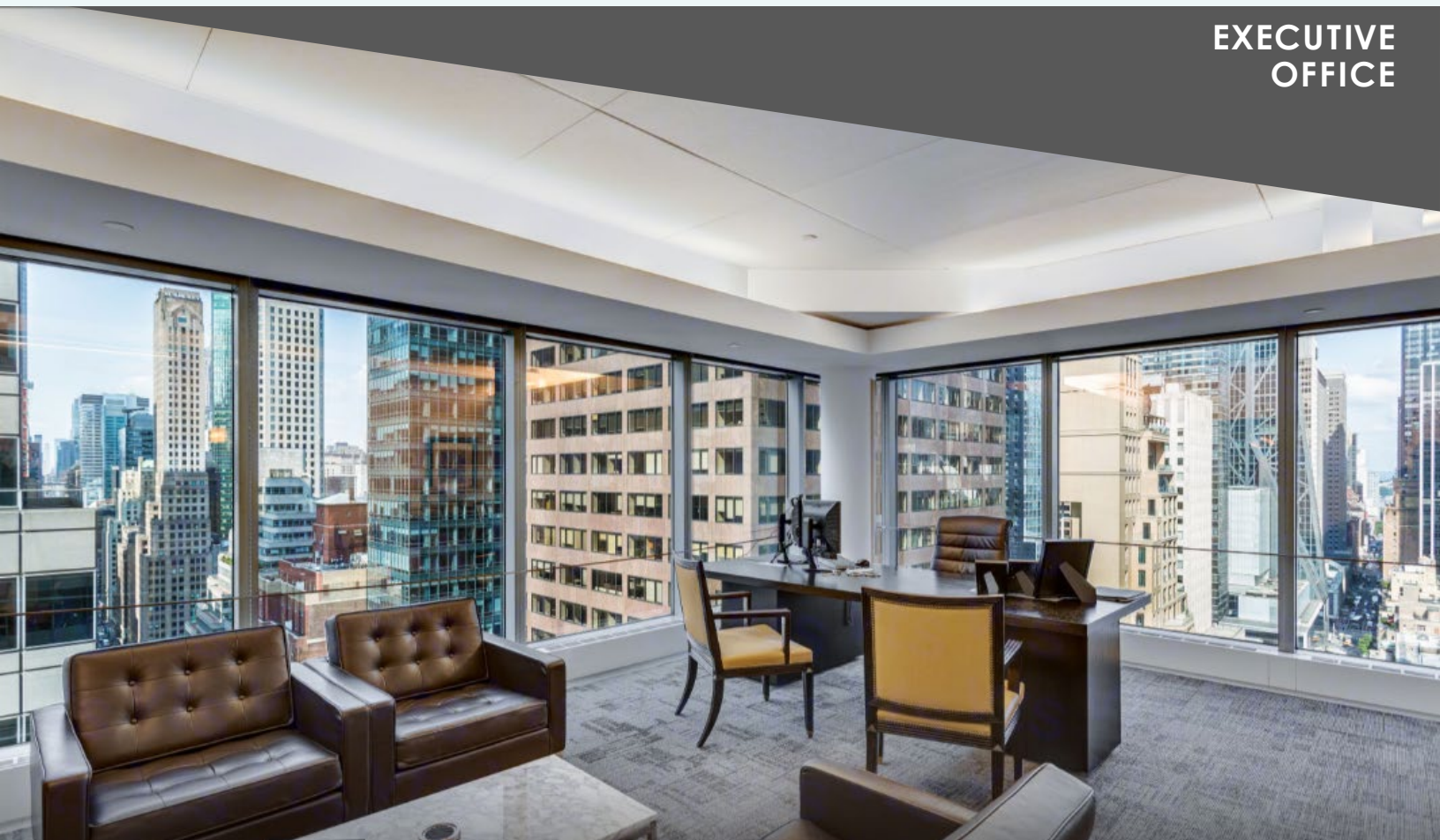
- Fitness center, private showers, multi-purpose rooms, bike room
- Outdoor sculpture garden with café
- LEED-EB GOLD, Wired Platinum



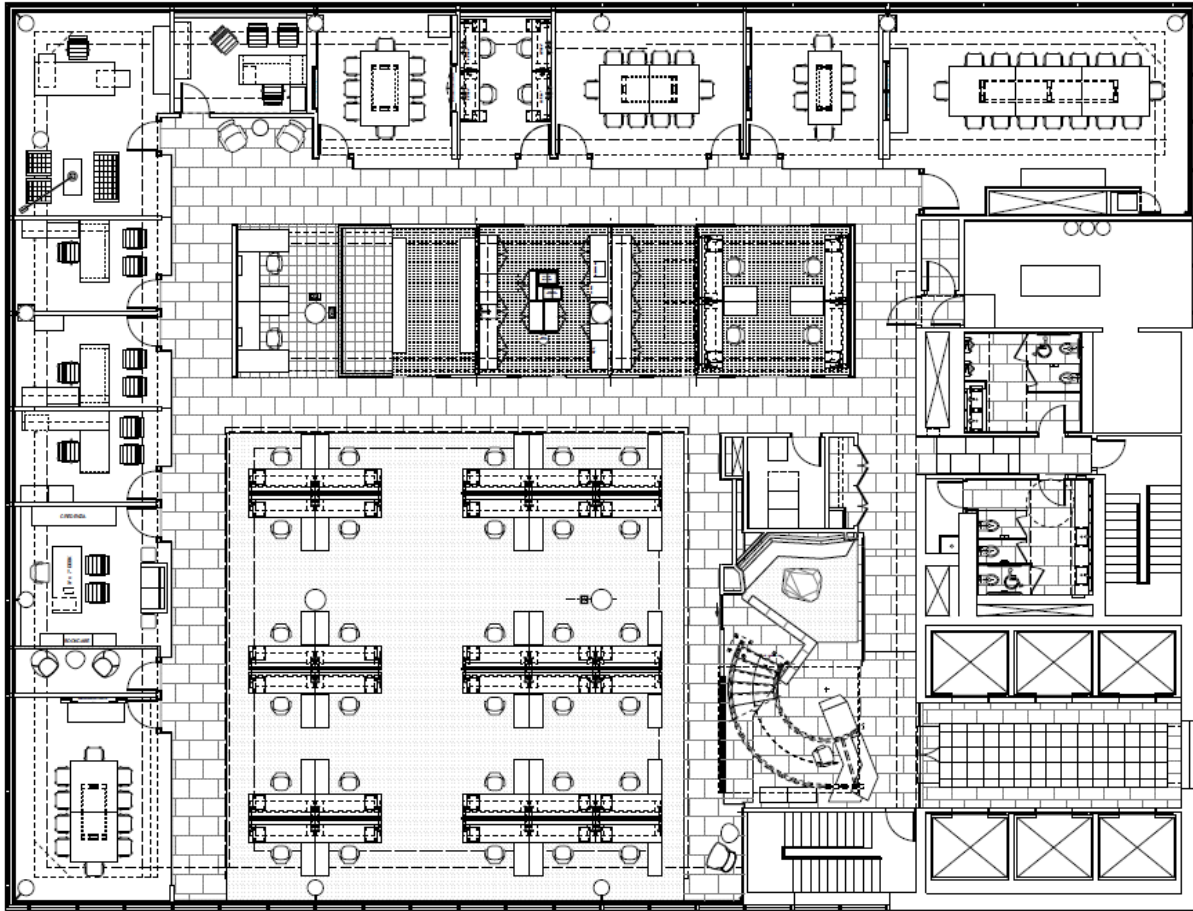
WORKSTATIONS



EXECUTIVE OFFICE



535 MADISON AVENUE
24th floor – 14,765 RSF



- **Offices - 6**
- **Large workstations – 40**
- **Reception - 1**
- **Conferencerooms – 4**
- **Boardroom – 1**
- **Pantry**
- **Storage, mother's room, IT**