

# 535 Madison

EXQUISITELY BUILT AND FURNISHED SUBLEASE  
TROPHY BUILDING



## Space Highlights

- Entire floor 24 and/or 25
- 14,765 RSF or 29,530 RSF
- Sublease Term to March 2030
- Immediate possession

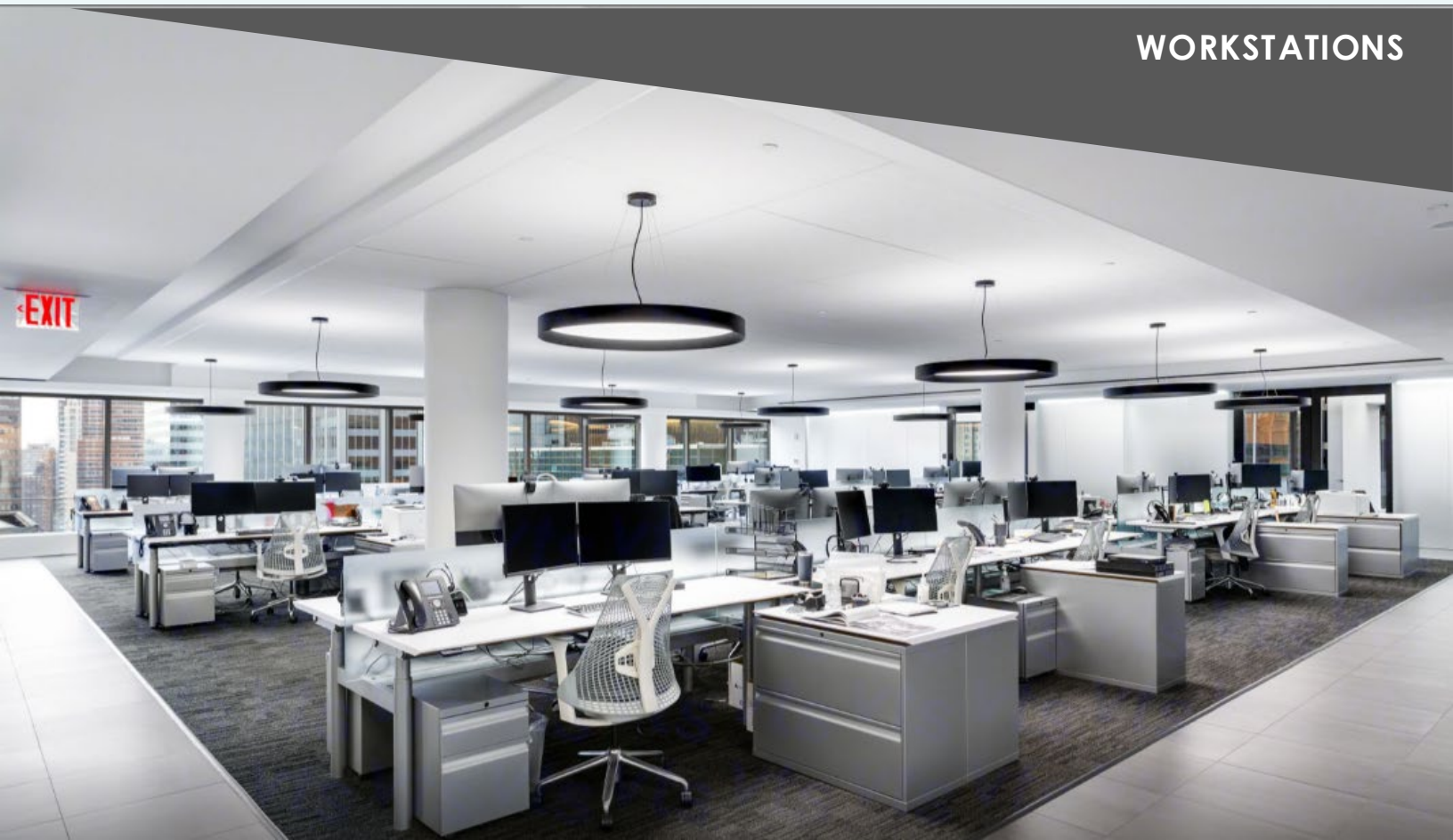
## Building Highlights

- Fitness center, private showers, multi-purpose rooms, bike room
- Outdoor sculpture garden with café
- LEED-EB GOLD, Wired Platinum

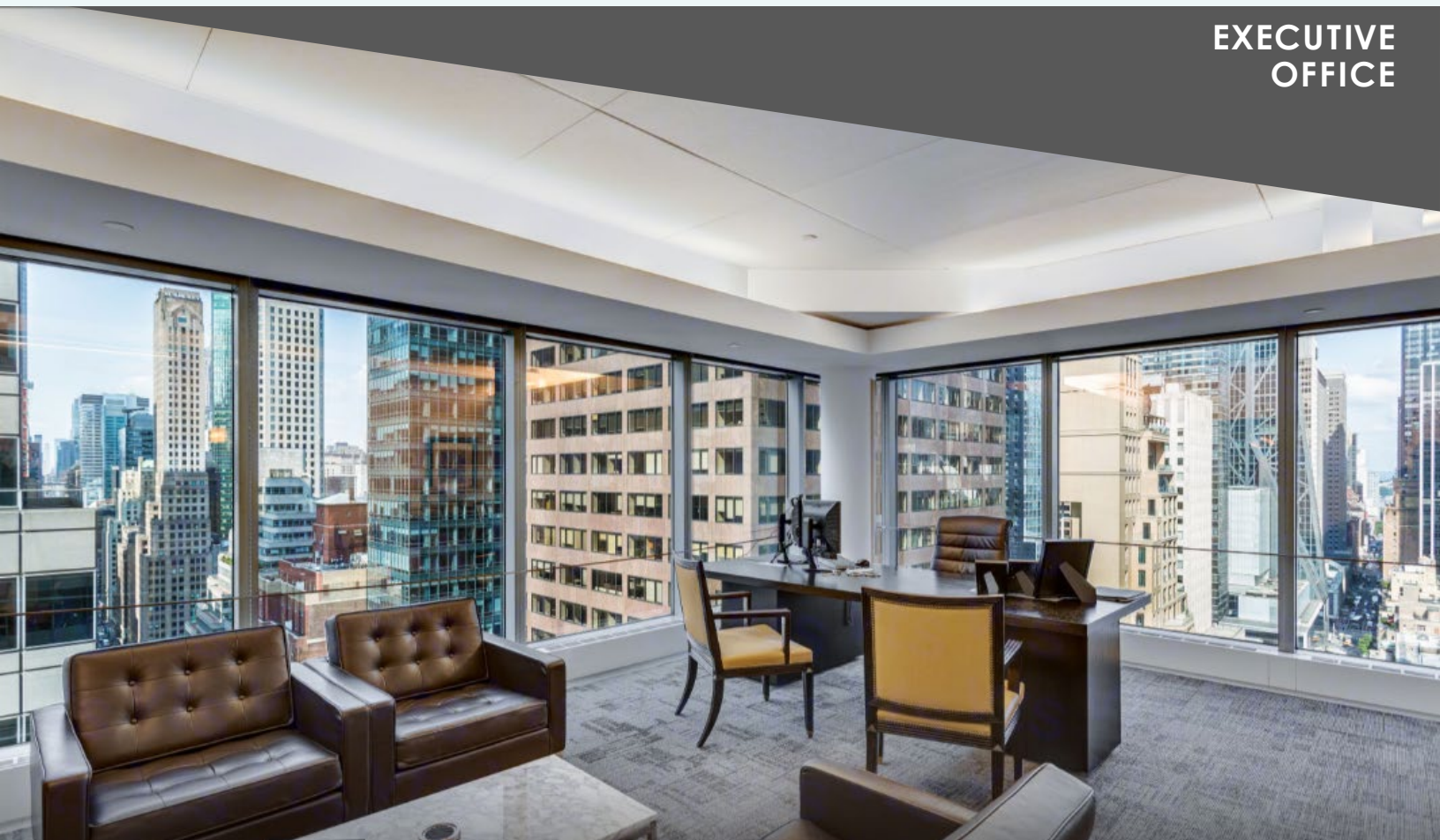




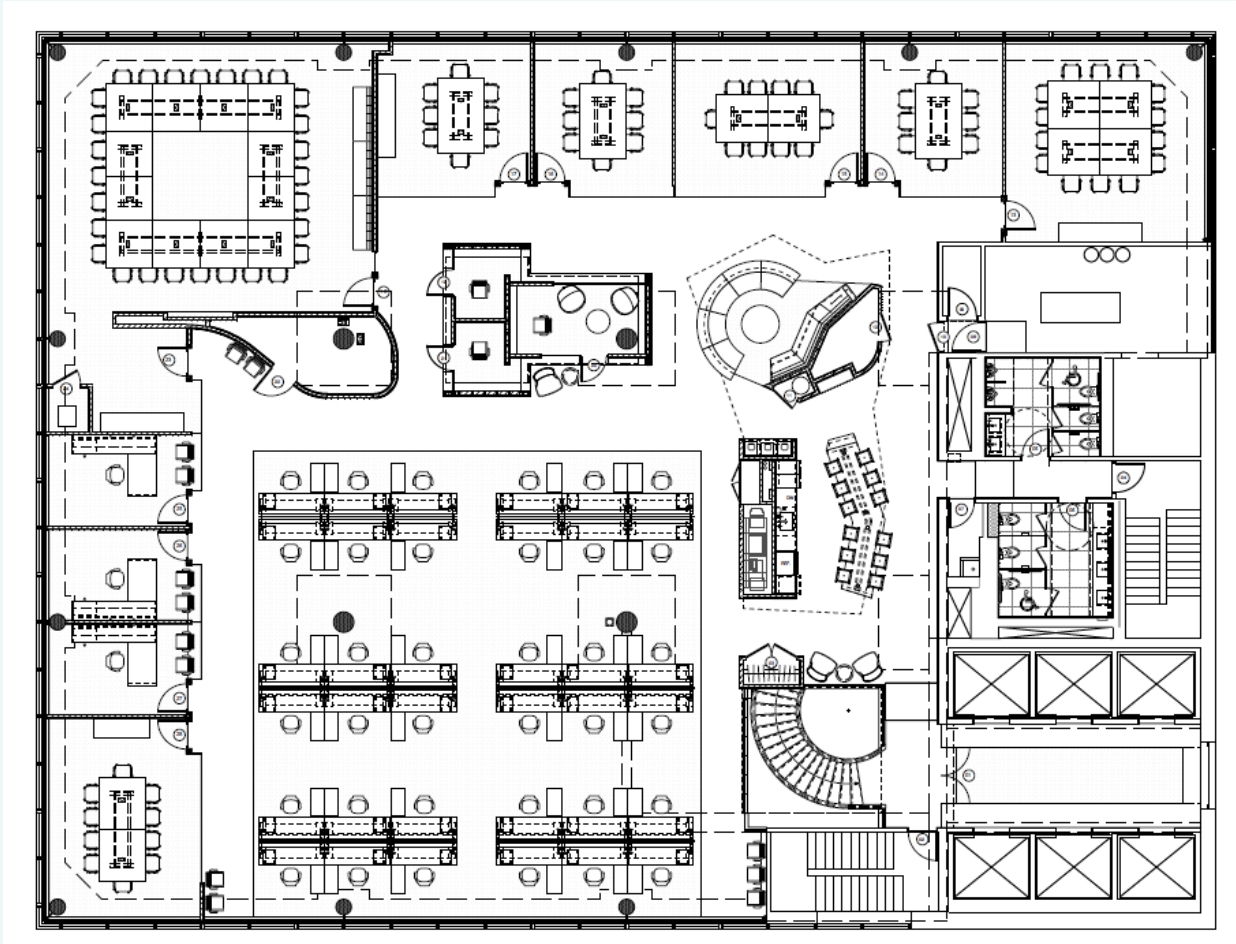
## WORKSTATIONS



## EXECUTIVE OFFICE



**535 MADISON AVENUE**  
**25<sup>th</sup> floor – 14,765 RSF**



- **Offices - 3**
- **Large workstations – 36**
- **Reception - 1**
- **Conference rooms – 6**
- **Mega boardroom – 1**
- **Pantry with lounge**
- **Phone / huddle rooms – 3**
- **Storage, IT**