

**14,795 SF
FOR SUBLEASE**



485 LEXINGTON
AVENUE

NEW YORK, NY





**9TH
FLOOR**

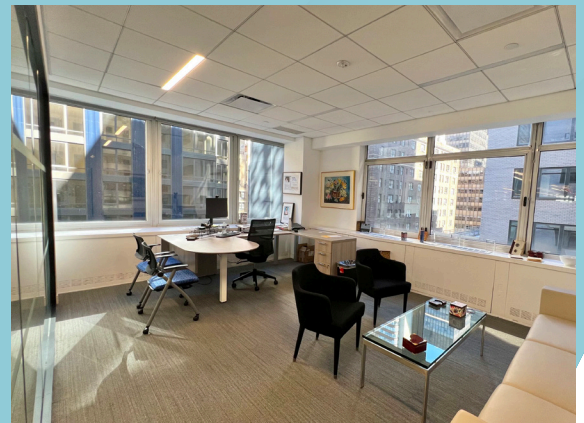


PROPERTY HIGHLIGHTS

- Steps from Grand Central Terminal
- On-site parking garage and bike room
- Energy Star Certified
- Fitwel certified
- WELL Health-Safety rated
- LEED Gold
- WiredScore Platinum

SPACE FEATURES

- Term: Through July 2031
- Newly built plug & play creative installation
- Direct elevator presence
- Three sides of light



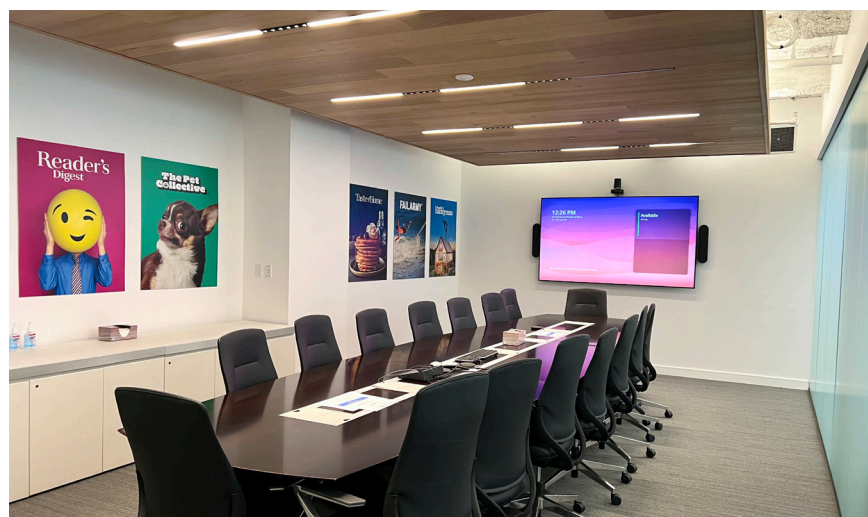
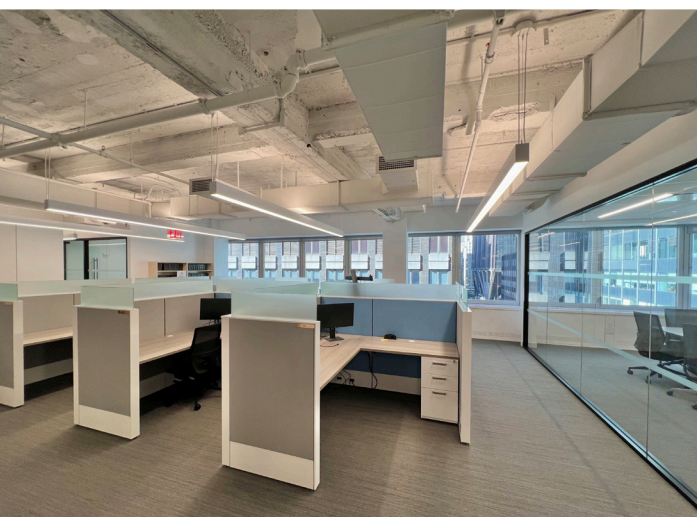
FLOOR PLAN



14,795 SF

LAYOUT

- 1 (16-person boardroom)
- 1 (10-person conference room)
- 1 (6-person conference room)
- 5 (2-4 person meeting rooms)
- 12 perimeter offices
- 1 corner executive office
- 40 workstations
- Pantry & lounge



NEW YORK

MIDTOWN TRANSPORATION MAP

