

TIMES SQUARE | THEATER DISTRICT | ROCK CENTER

148

W. 51ST
STREET

Turnkey Restaurant Opportunity





148

W. 51ST STREET

Location

W. 51st Street, Southside
Between Sixth & Seventh Avenues

Size

Ground floor: 11,500 sf
Mezzanine: 3,500 sf
Lower Level: 1,500 sf

Occupancy Summary

Ground floor: 361 seats
Mezzanine: 94 seats
Total: 455 seats

W. 51st Street Frontage

Approx. 80'

Possession

5/1/2023

Status

Currently Ruth's Chris Steak House

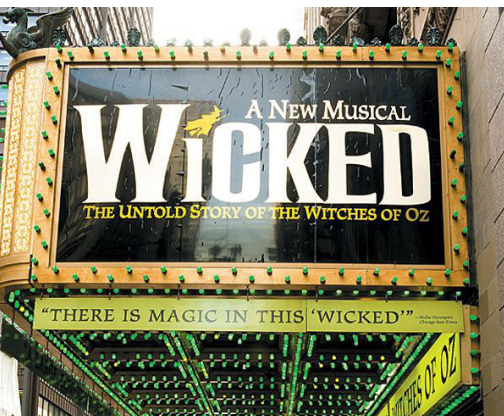
Nearby Transportation

Rockefeller Center station **B D F M**
47th Street station **N R W**
7th Avenue station **B D E**

Features

- Turnkey restaurant centrally located between Rockefeller Center and Times Square, two of New York's largest visitor/tourist destinations
- Convenient Midtown West location, benefitting from high foot traffic and dense office population
- Surrounded by world-class restaurants, retailers, hotels, Radio City Music Hall and Theater District
- Steps from numerous subway stations
- Visibility from Seventh Avenue

148
W. 51ST
STREET



AREA OFFICE TENANTS

BARCLAYS | UBS | COMCAST/NBC UNIVERSAL | GENSLER
AIG | SIGNET JEWELERS | SHOWTIME | BNP PARIBAS | TPG
WARNER MUSIC | BLEACHER REPORT | ROCKEFELLER GROUP

THE NEIGHBORHOOD

1/2 mile radius



30M+
ANNUAL
RIDERSHIP



104K+
AREA
EMPLOYEES



8,500
HOTEL KEYS IN
THE SURROUNDING
NEIGHBORHOOD

1 B C D E N Q R

NEIGHBORING RETAIL

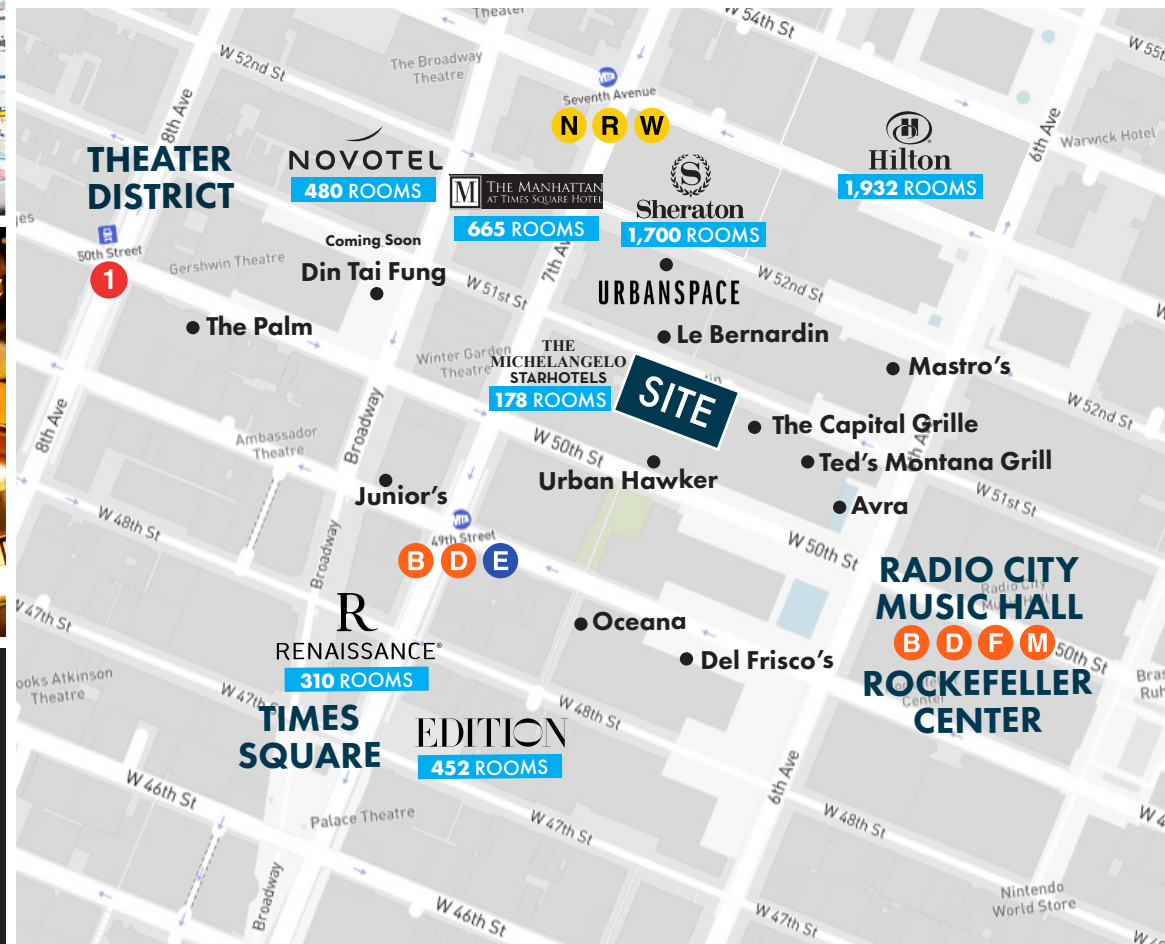
Le Bernardin
MASTRO'S
STEAKHOUSE

Del Frisco's
THE
CAPITAL
GRILLE

BOBBY VAN'S
Steakhouse
URBANSACE

鼎泰豐
DIN TAI FUNG
Coming Soon

Ted's
MONTANA GRILL

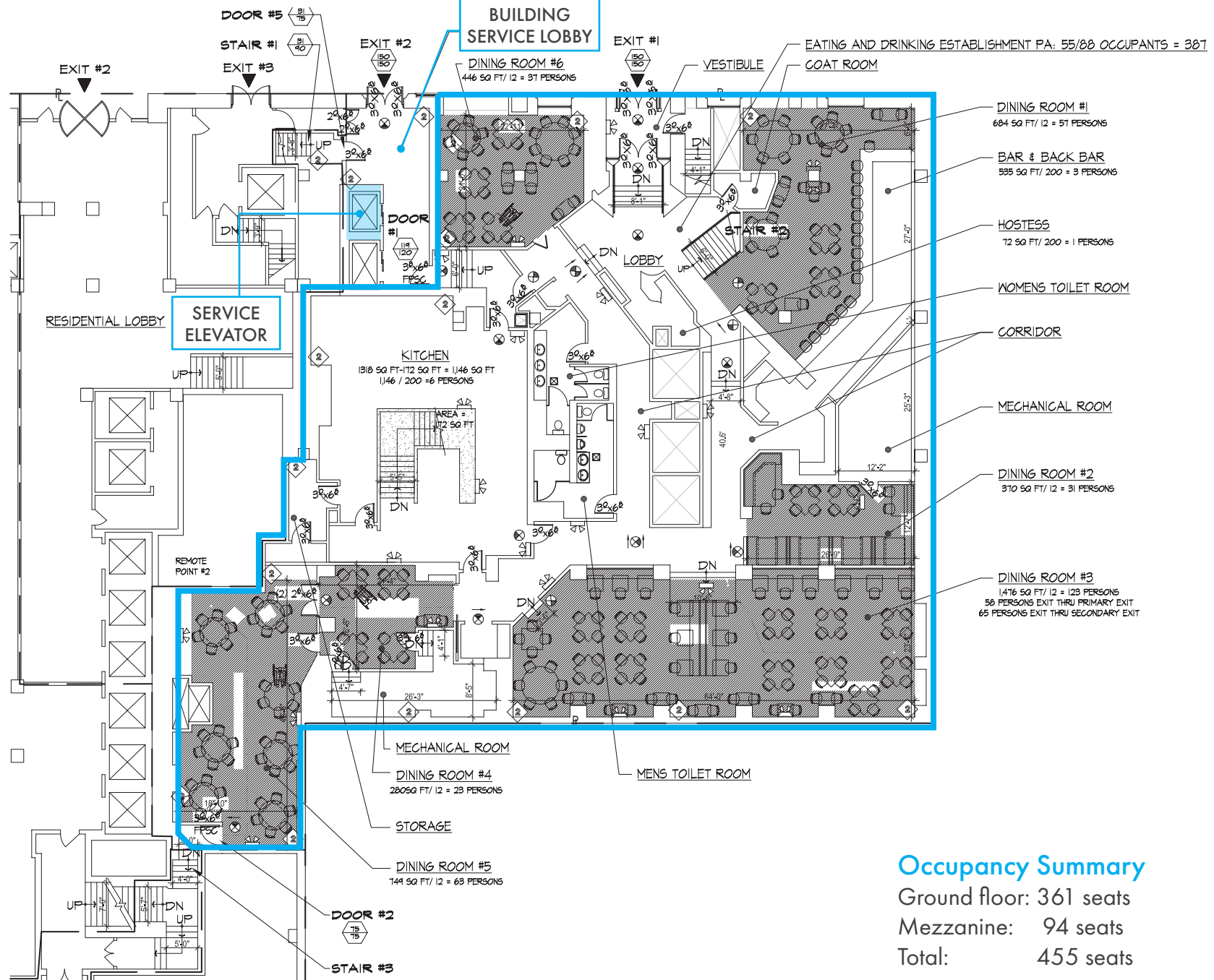


148

W. 51ST
STREET

GROUND FLOOR
11,500 sf

W. 51st Street



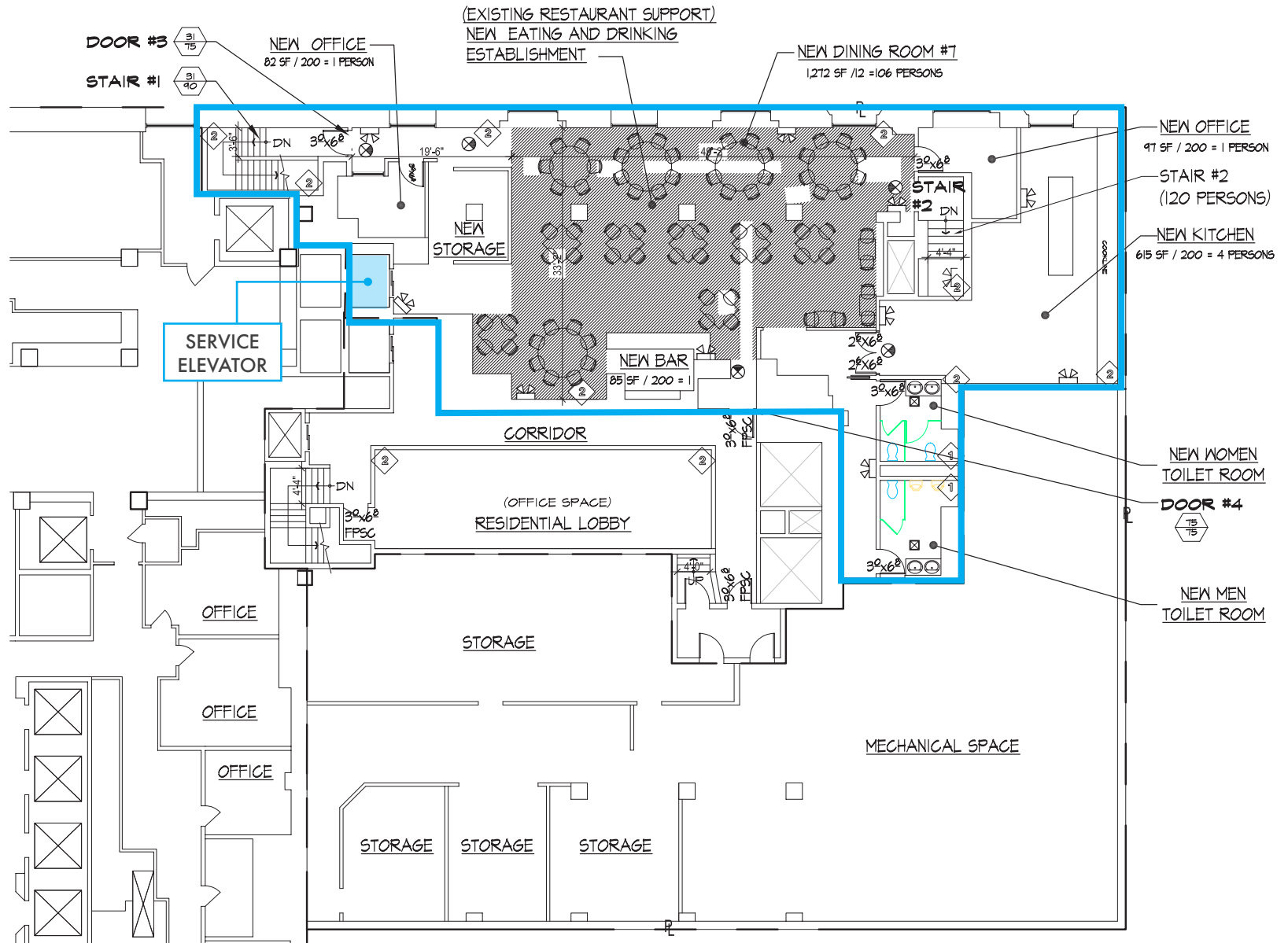
Occupancy Summary

Ground floor: 361 seats
Mezzanine: 94 seats
Total: 455 seats

148

W. 51ST
STREET

MEZZANINE
3,500 sf



Occupancy Summary

Ground floor: 361 seats
Mezzanine: 94 seats
Total: 455 seats