

500 FIFTH AVENUE

Entire 18th Floor Sublease

Term runs through May 30th, 2034
Space | 16,483 RSF

Immediate Occupancy



500 FIFTH AVENUE

Entire 18th Floor Sublease

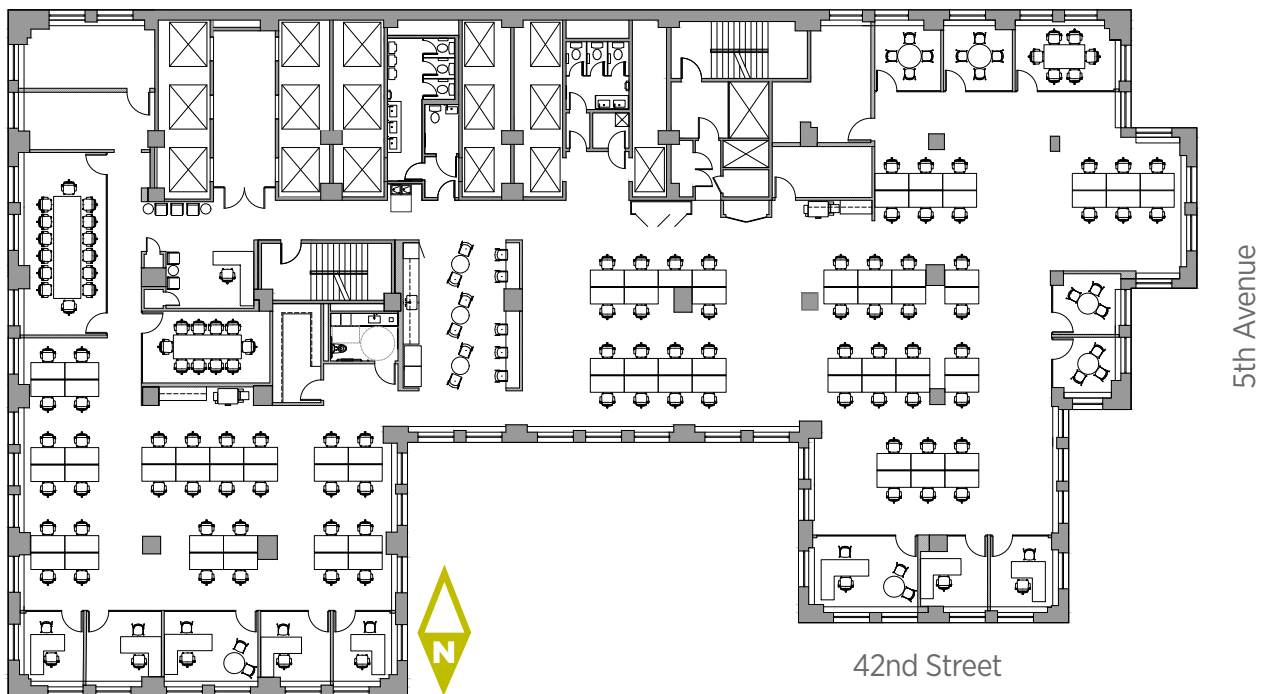
BUILDING & SPACE DETAILS

- Brand new prebuilt overlooking Bryant Park and New York Library
- Ability to densify
- Great light and views
- Located near multiple subway lines and Grand Central
- Wired Score Platinum & Well Certified
- Building has an in-house coffee & newsstand with a 2nd floor seating area
- Recent upgrades include destination dispatch elevators and elevator modernization as well as window replacements
- Potential to make 1 or 2 contiguous floors available for sublease

LAYOUT

Entire 18th Floor | 16,483 RSF

81	Workstations
8	Private Offices
5	Breakout Rooms / Huddle Rooms
2	Conference Rooms
1	Reception Area
1	Pantry



500
FIFTH
AVENUE

Entire 18th Floor Sublease

SPACE RENDERINGS

