

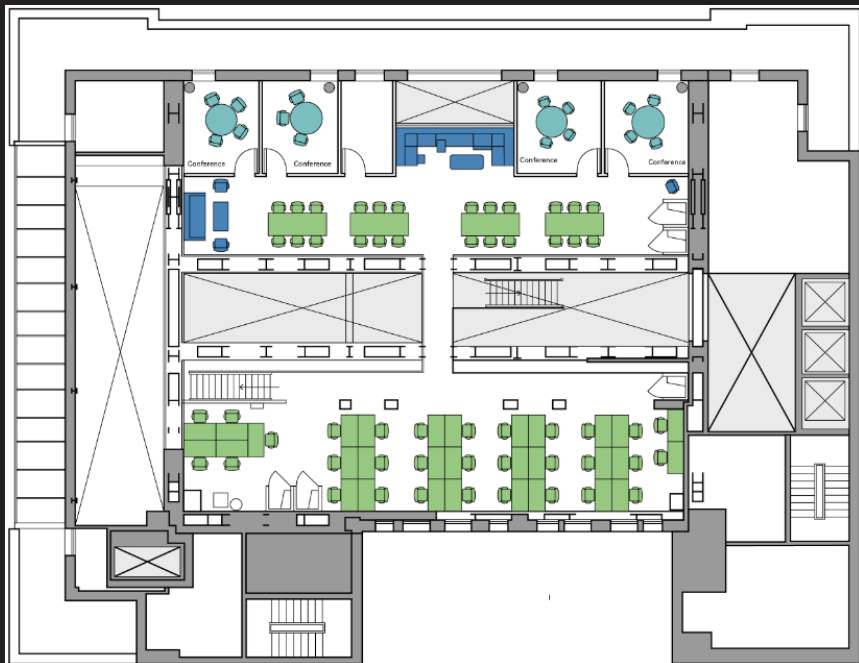
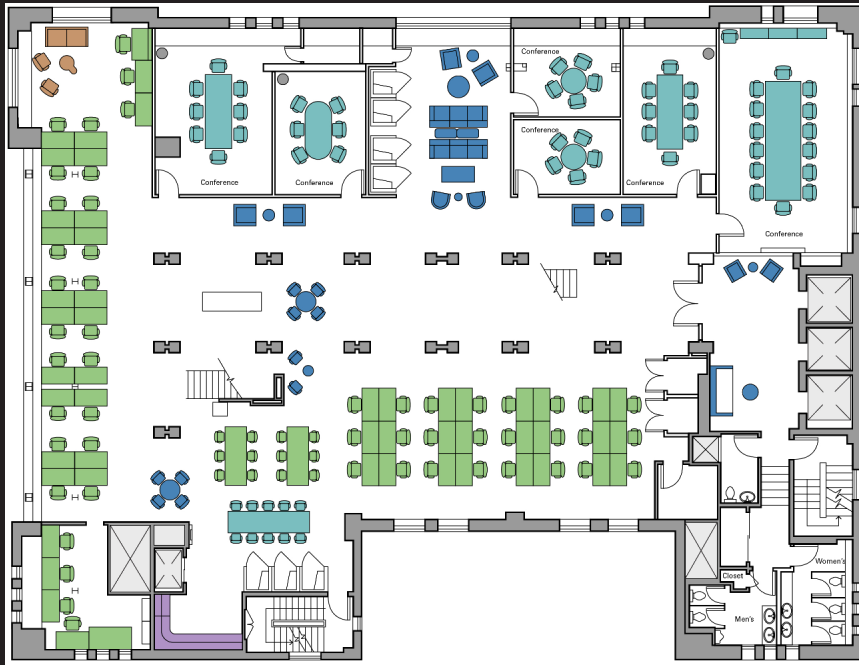
# 25 WEST 39<sup>th</sup> STREET

Plug & Play Sublease  
Opportunity





## Entire 14<sup>th</sup> Floor: 17,400 RSF



|  |                    |
|--|--------------------|
| <b>Premises:</b> Entire 14 <sup>th</sup> Floor | – 12,417 RSF       |
| <u>Mezzanine</u>                               | <u>– 4,983 RSF</u> |
| <b>Total</b>                                   | <b>17,400 RSF</b>  |

**Possession:** Immediate

**Term:** Through June 30, 2026

**Rate:** Upon Request

### Space Features:

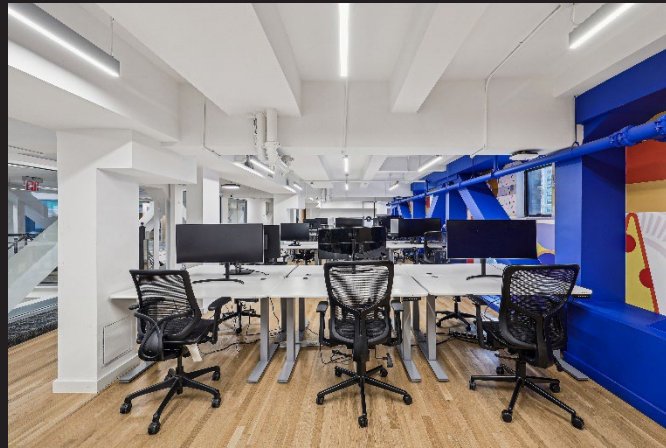
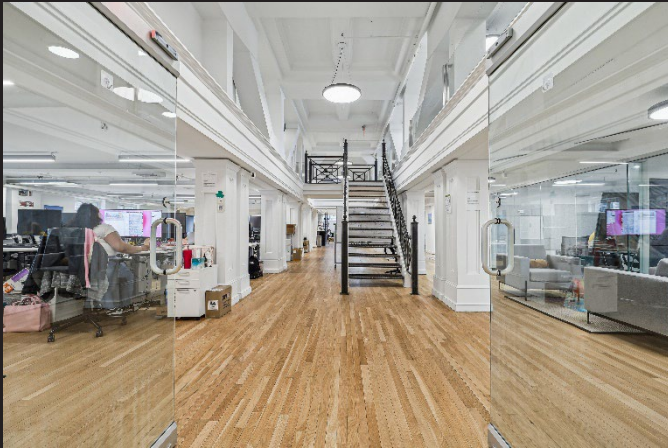
- Bright space with oversized skylight and great views.
- Internal interconnecting staircase between the 14<sup>th</sup> floor and large usable mezzanine area.
- Space is built with hardwood floors, exposed ceiling, glass fronted offices, open bullpen area and wet pantry.
- Space is fully furnished including multiple phone booths for subtenants use.
- Sublandlord with strong credit.

### Building Features:

- Tenant amenities include access to a brand-new outdoor roof deck, an in-building parking garage, and a 24/7 attended lobby.
- Located one block away from Bryant Park



## Photos of space





## Tenant Roof Deck Amenity





