

PARK AVENUE PERFECTION

Park Avenue Tower



Space Profile

Entire 5th Floor: **21,178 sf**

Entire 6th Floor: **18,118 sf**

Entire 7th Floor: **18,037 sf**

Total: 57,333 sf

Rate: **Upon request**

Availability: **Immediate**

Term: **Through 11/2035**

Key Highlights

- Newly-built modern financial services installation with exposed ceilings and primarily open space
- Institutional Sublandlord and Landlord
- Class "A" building with newly-installed amenities including: fitness center, meeting facilities, coffee bar, pool room and lounge space
- Dramatic interconnecting stairs and slab cuts between all three floors

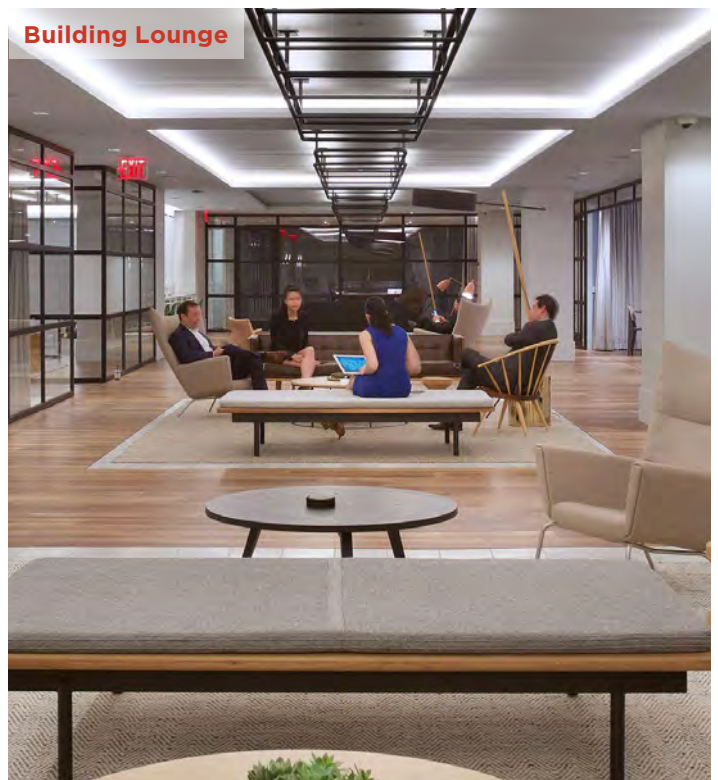
SUBLEASE 65 East 55th Street, New York, NY 10022 | Between Park & Madison Avenues



SUBLEASE 65 East 55th Street, New York, NY 10022 | Between Park & Madison Avenues

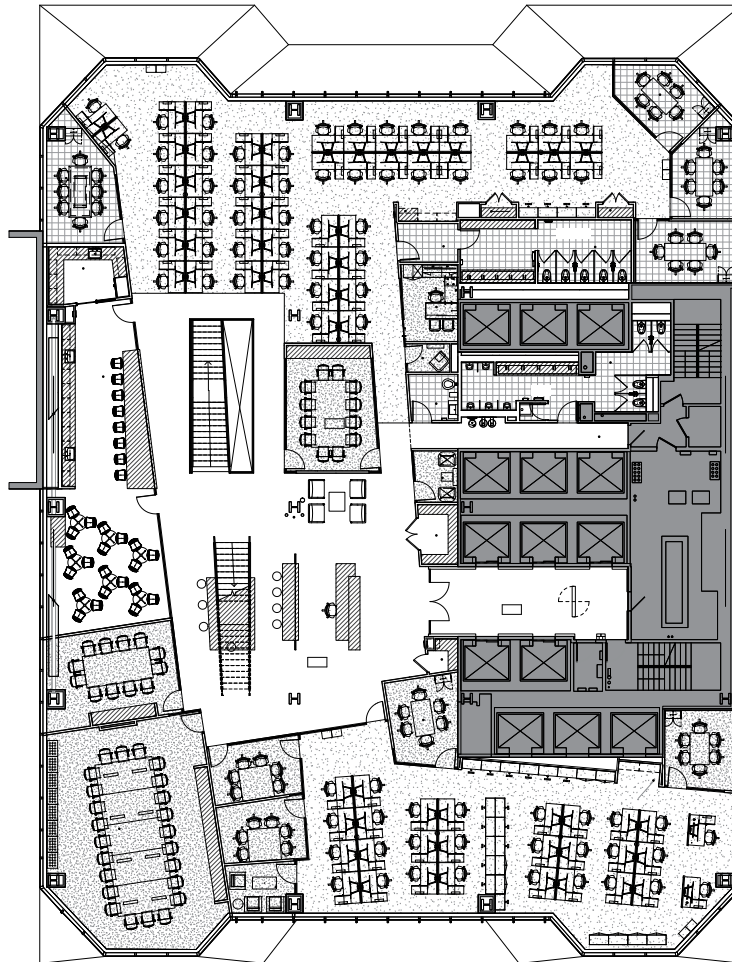


SUBLEASE 65 East 55th Street, New York, NY 10022 | Between Park & Madison Avenues



Entire 6th Floor

18,118 sf



Space Overview

- 76** workstations
- 11** meeting rooms/offices
- 2** conference rooms
- 1** boardroom
- 3** phone rooms

Satellite pantry and lounge