

DRAMATIC SPACE WITH BEST TERRACE IN NYC



Space Profile

Size:
18,326 RSF

Floor(s):
19th

Rate:
Upon request

Availability:
December 1, 2023

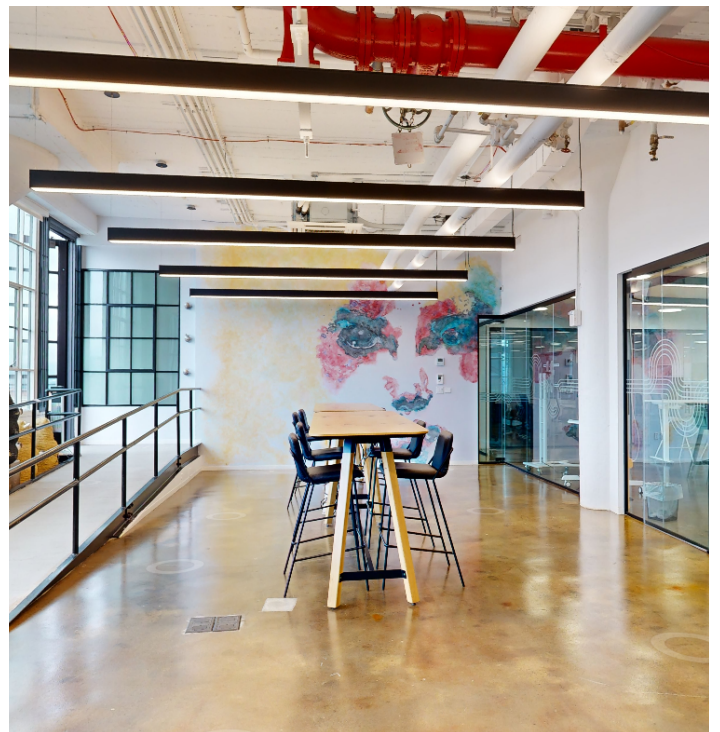
Term:
**Flexible through
January 31, 2030**

Key Highlights

- Unique full-floor opportunity with fantastic light and views featuring a 7,000 square foot terrace.
- Creative installation with a mix of open workspace and collaboration/break out areas.
- Furniture can be made available.
- Building recently underwent a \$150 Million capital improvement program.
- Building offers multiple dining options, event space, a bike room, a fitness room, a drive-in theatre screen, a library and a work lounge

[Click here for a virtual tour](#)

SUBLEASE 601 West 26th Street | New York, NY 10001



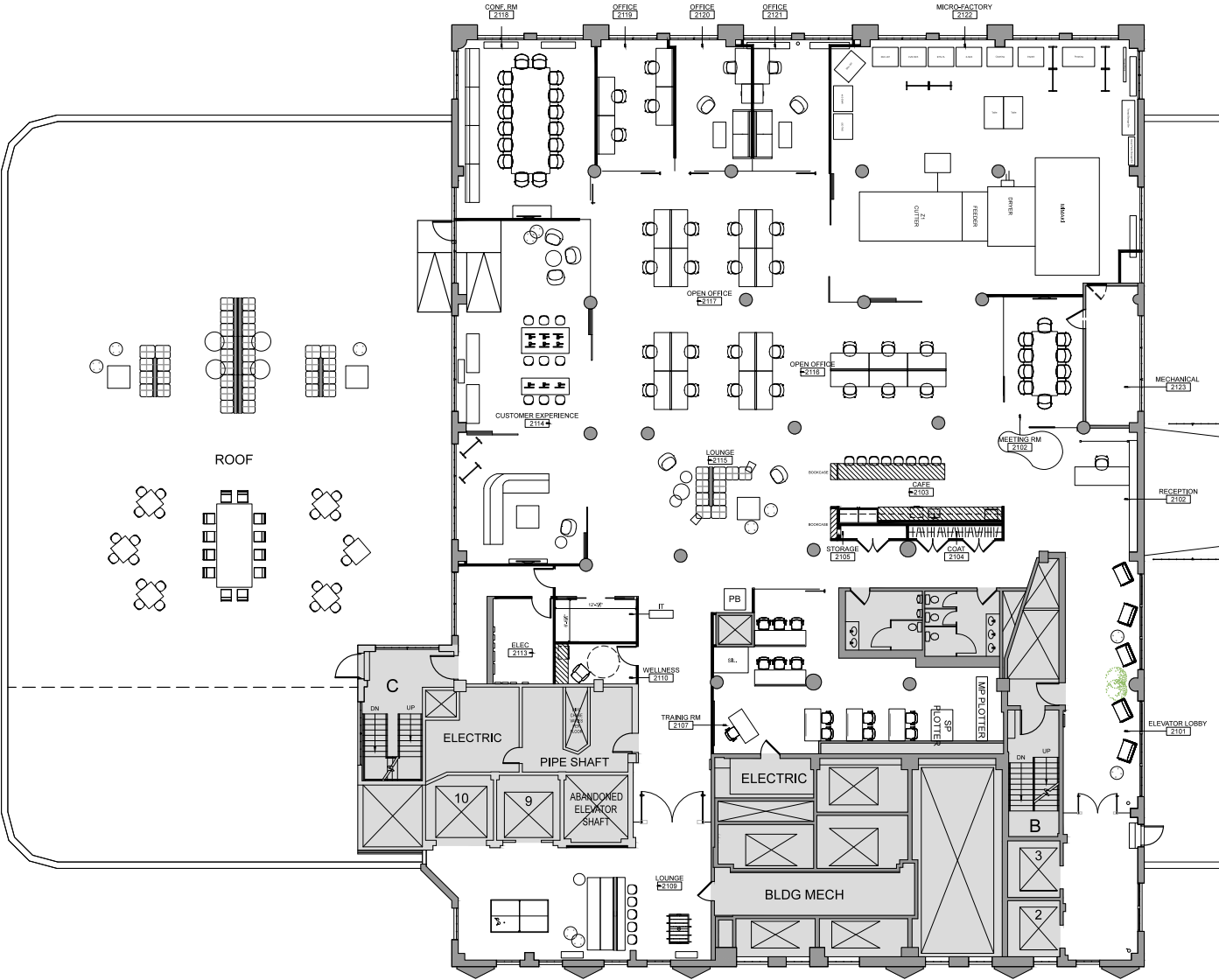
[Click here for a virtual tour](#)

SUBLEASE 601 West 26th Street | New York, NY 10001



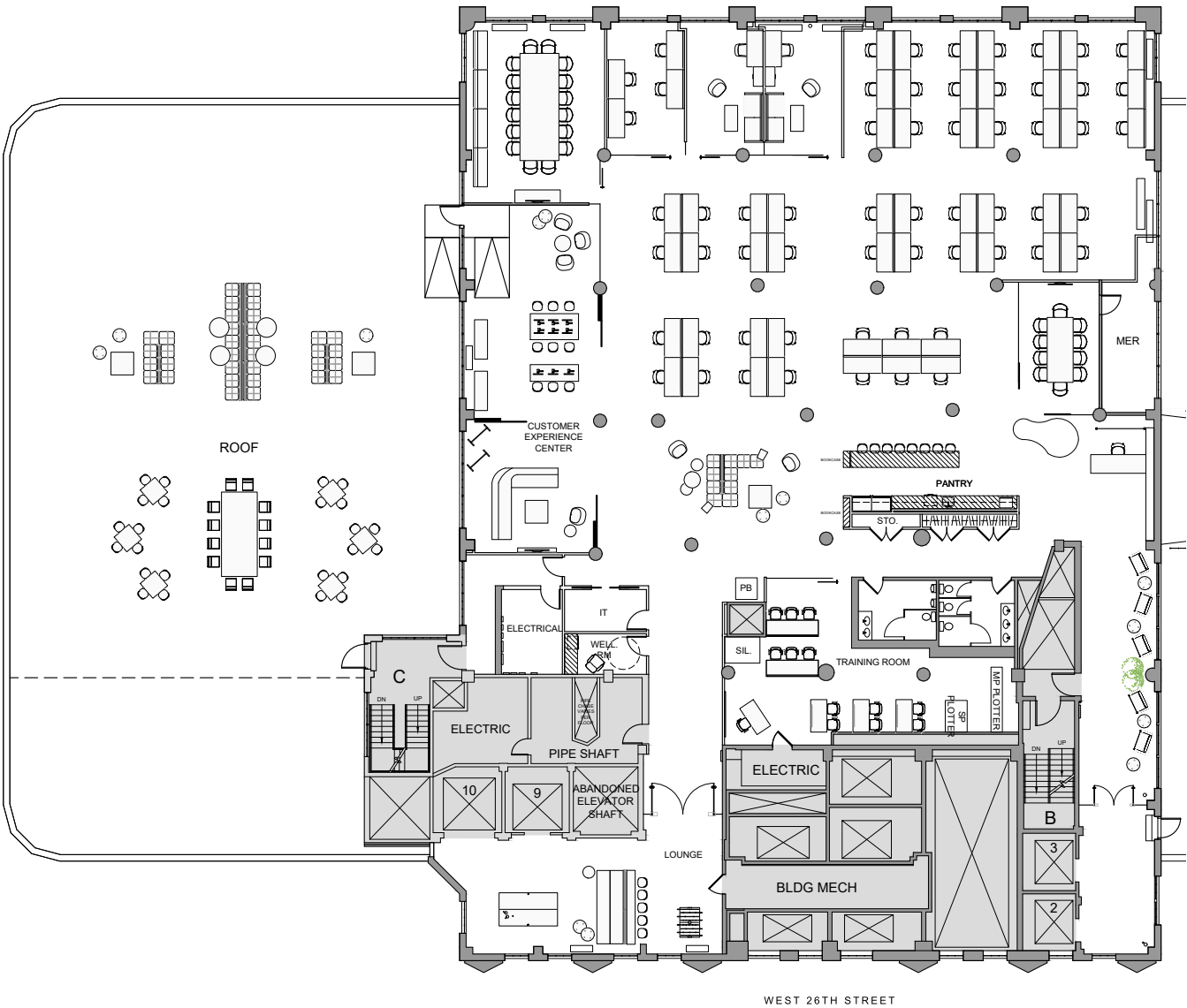
[Click here for a virtual tour](#)

As-Built Floor Plan



[Click here for a virtual tour](#)

Proposed Test-Fit Plan



[Click here for a virtual tour](#)