



387
PAS

PREMIER OFFICE SPACE
FOR DIRECT LEASE

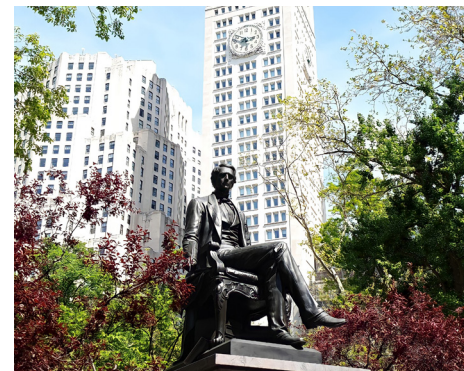
387
PAS

NEWLY RENOVATED AND RIGHT IN THE MIX OF THINGS

This **230,000 square foot** office and retail building is conveniently situated two blocks from Madison Square Park and two subway stops from Grand Central. This ideal Park Avenue South location is steps to the **6 N R** and **W**, trains and surrounded by some of the area's best restaurants, hotels, and nightlife.

ENTIRE 5TH FLOOR
19,269 SF

ENTIRE 2ND FLOOR
19,372 SF



2ND FLOOR

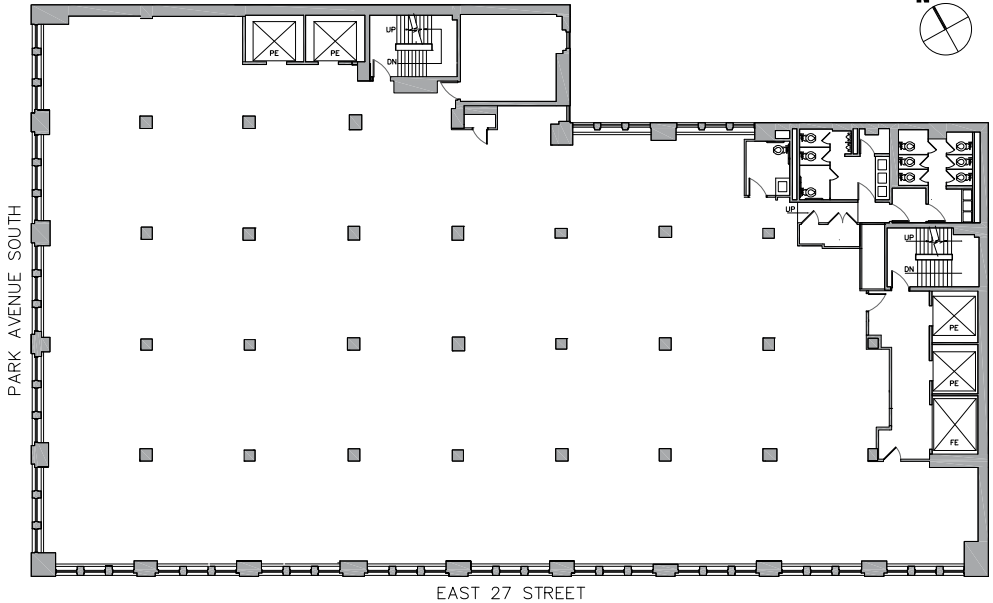


AVAILABLE SPACE

FLOOR	SF	DETAILS	FLOORPLANS
ENTIRE 5TH	19,269	Whitebox complete, ready for construction	VIEW
ENTIRE 2ND	19,372	Immediate Availability; Move-In Ready	VIEW

ENTIRE 5TH FLOOR 19,269 SF

Whitebox complete, ready for construction



TYPE	QTY
OFFICES	
Executive Office	1
Private Offices	4
Visitor Offices	2
WORKSTATIONS	
Benching (66" X 30")	126
Reception	1
AMENITIES	
Cafe	1
Coffee Bar	1

TYPE	QTY
COLLABORATION	
Large Conference (12 ppl)	1
Medium Conference (10 ppl)	1
Small Conference (8 ppl)	2
Open Collaboration	2

TYPE	QTY
SUPPORT & STORAGE	
Phone Room	3
Coat Closet	1
Copy Area	1
Storage	2
IT Storage	1
Wellness Room	1
TOTAL	
Head Count	134
RSF	19,269

- Pre-built plan underway
- Act fast for customized turn-key installation
- Full floor opportunity

NEIGHBORHOOD AMENITIES

WITHIN A 10 MINUTE WALK

88
RESTAURANTS

29
HOTELS

18
HEALTH CLUBS/
FITNESS CENTERS

4
ARTS & ENTERTAINMENT



