

110 East 40th Street
Between Park and Lexington Avenues

RESOLUTION
REAL ESTATE PARTNERS
A Member of **MJGlobal**



SPACE DETAILS

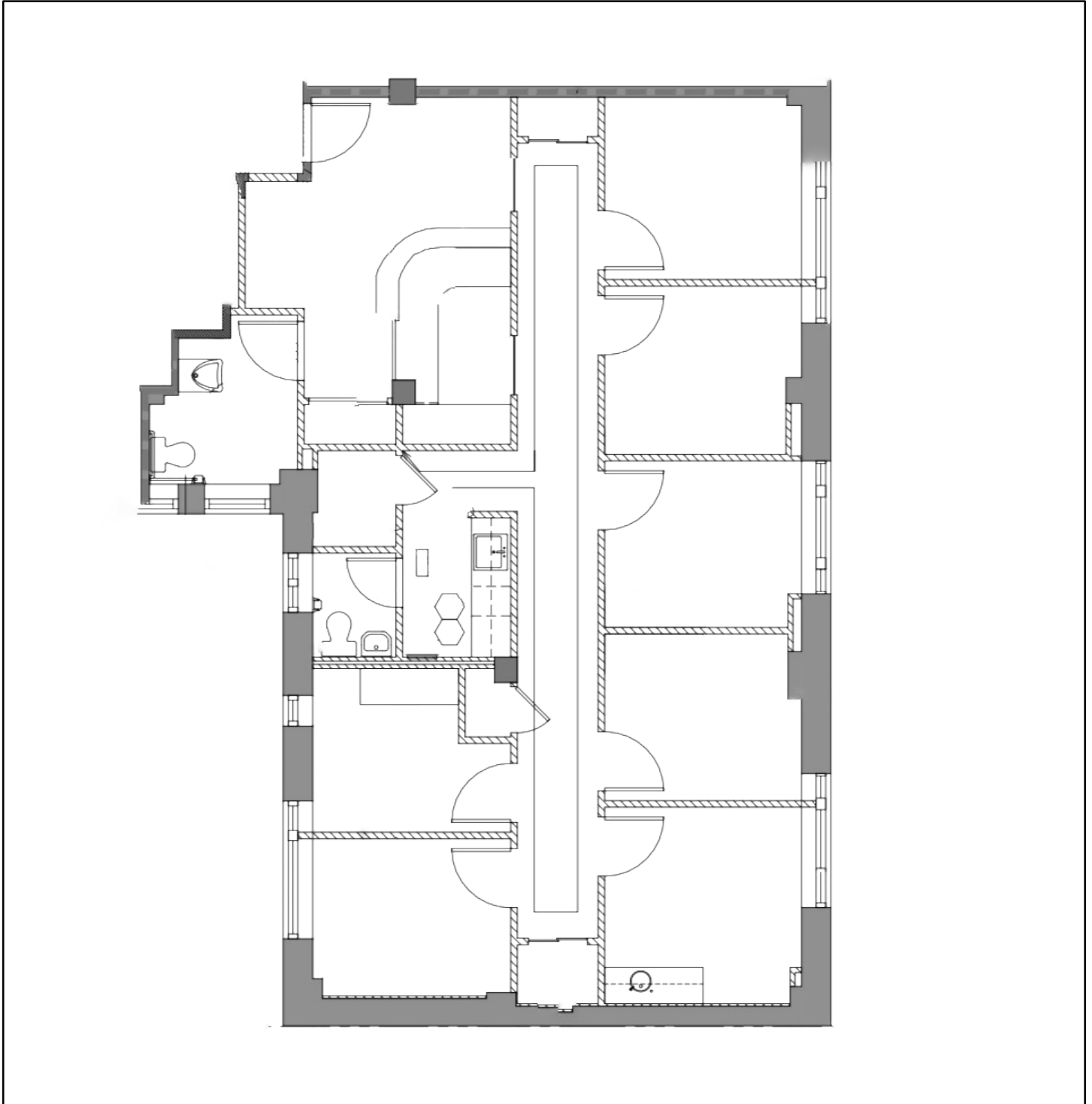
- **Space:** Suite 407
- **Total Area:** 2,250 RSF
- **Possession:** Arranged
- **Term:** Negotiable
- **Rent:** Upon Request
- **Common Charges 2022:** \$22,530.12
- **Taxes 2021/2022:** \$19,684.72

HIGHLIGHTS

- LIVE/WORK
- Move-in Ready High-End Medical Installation
- 5 Windowed Exam Rooms, Including 1 Room w/Sink
- Reception area
- 2 Restrooms
- Wet Pantry
- 2 Offices/Consult Rooms, One with Windows
- Available For Sale- Details Upon Request
- Recently renovated attended Lobby with Elevators
- All Office Uses Will Be Considered

110 East 40th Street

Between Park and Lexington Avenues



110 East 40th Street

Between Park and Lexington Avenues

