

# NEWLY BUILT TURN-KEY SUBLEASE WITH DIRECT GRAND CENTRAL ACCESS

Flexible Term



ONE GRAND CENTRAL PLACE  
— 60 EAST 42ND STREET —

## Space Profile

Floor / Size:  
**Partial 16th Floor / 2,049 RSF**

Rate: **Upon request**

Availability: **Immediate**

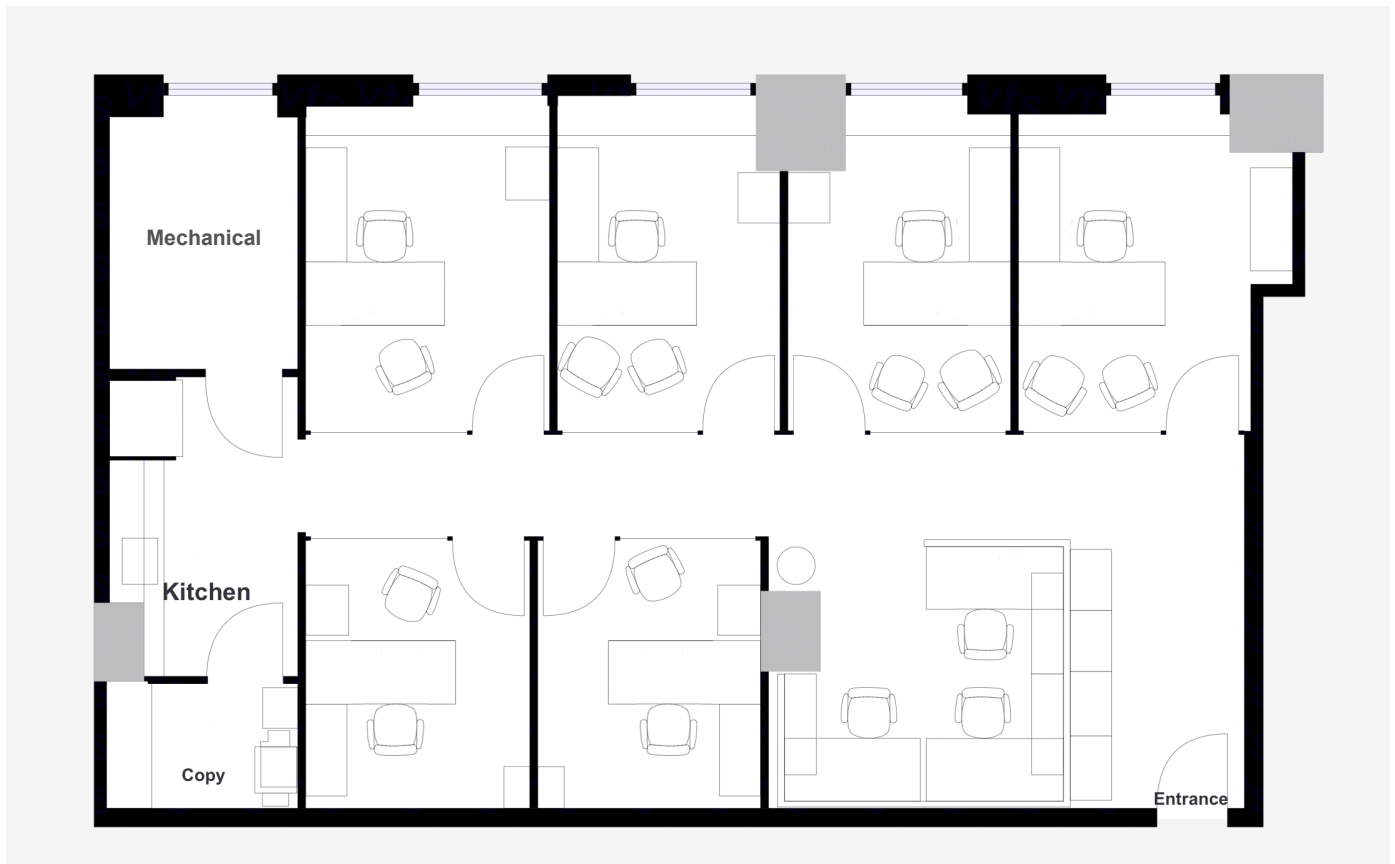
Term: **Flexible / 1-5 years**

## Key Highlights

- Institutional landlord
- Prominent location
- Direct Grand Central access
- Turn-key / fully furnished sublease



**Partial 16th Floor**  
**2,049 RSF**



**Space Overview**

- 4** perimeter offices
- 2** internal offices
- 3** workstations
- 1** pantry



**SUBLEASE** One Grand Central Place - 60 East 42nd Street, New York, NY 10165

