

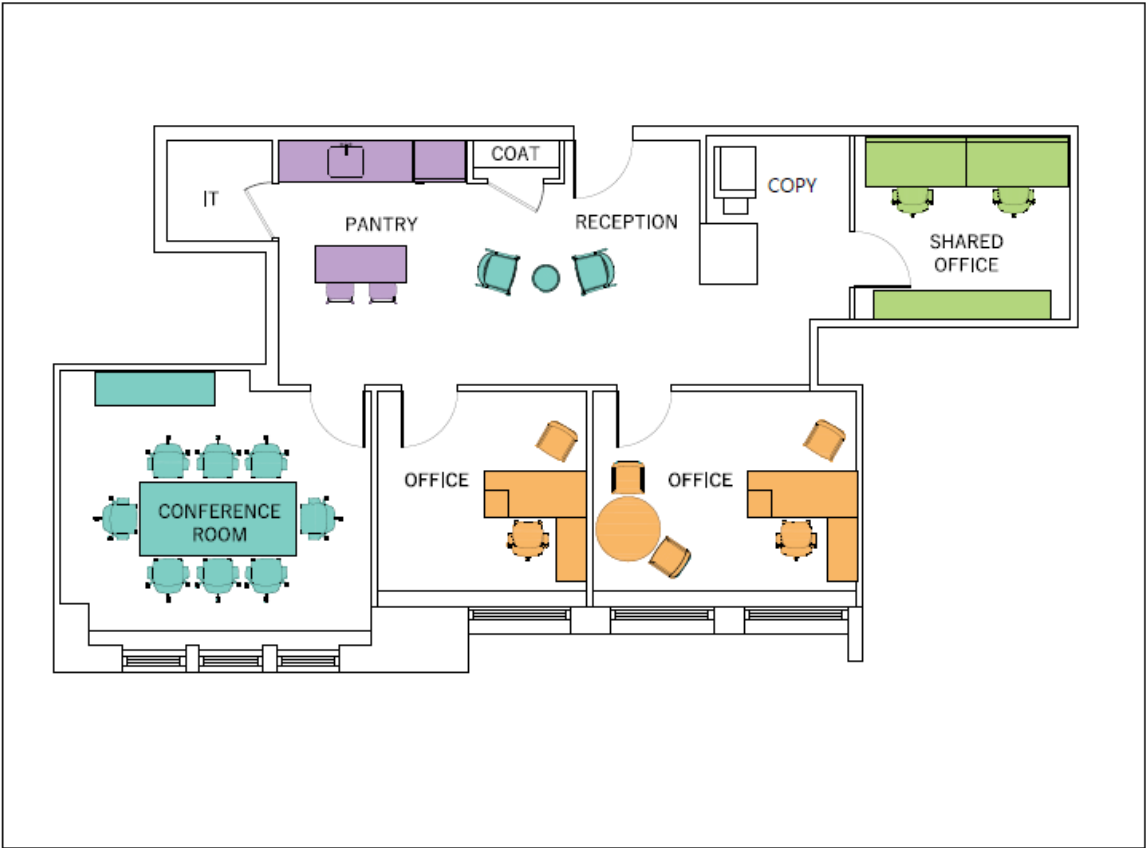
For Sublease

60 E 42nd Street – One Grand Central Place
Partial 52nd Floor – 2,095 RSF



Prime Small Plug-n-Play

- **Term thru September 2026**
- **Available immediately**
- **Sweeping southern views**
- **Building features direct connectivity to Grand Central, as well as an in-building retail concourse**
- **Modern buildout featuring:**
 - **1 conference room**
 - **2 windowed offices**
 - **1 shared interior office**
 - **Small bullpen/lounge /reception area**
 - **Wet pantry**



Suite 5220 | 2,095 RSF

Category	Qty
Office	2
Workstation (5'-6' Bench)	2
TOTAL	4
Reception	1
Conference Room	1
Pantry	1
Copy	1
IT	1
Coat	1

