

Furniture shown for concept only

200 Park Avenue South

Northwest Corner of East 17th Street, Union Square

Modern Open Layout - 2,210 RSF

Bright Space with North and West Views

Steps from all that Union Square's Surrounding Area Offers
Green Market, Restaurants, Retail, Citibike & other work/lifestyle benefits

**Direct access to the Union Square transportation
hub's 4 5 6 L N Q R W express/local subways
and NJ PATH train at 23rd Street/6th Avenue station**



Furniture shown for concept only

Suite 1707: 2,210 rsf

- Hardwood floors, (1) glass-front windowed conference room, (1) large multi-person windowed office, (1) glass-front interior office, wet pantry, open area, private restroom, exposed ceiling
- North and west exposure offers great natural light and views of Hudson Yards
- Space delivered vacant

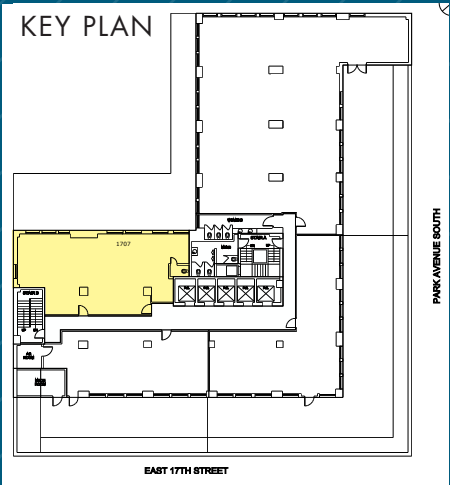
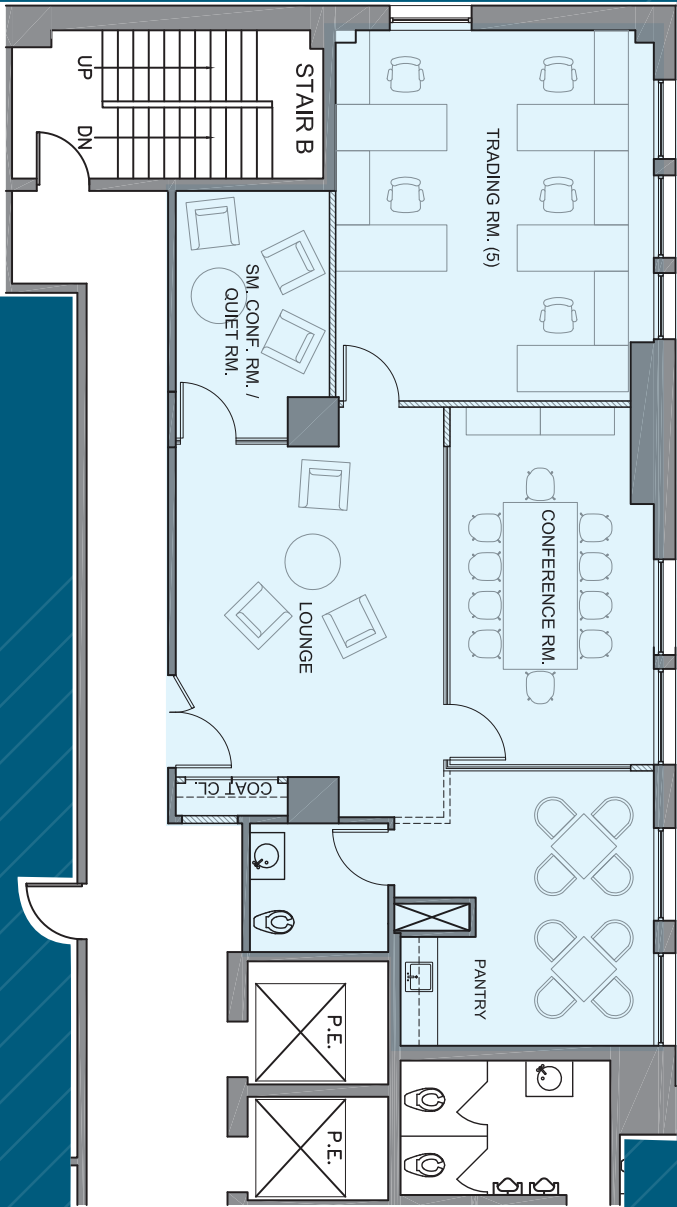
Possession: Immediate

Rent: Aggressive Pricing - Call or email for details



- Overlooking Union Square Park, offering tenants a burgeoning submarket full of creative tenancy
- 12'-2" Ceiling heights and tenant controlled air conditioning
- Card-key security system providing 24/7/365 access via attended lobby
- Direct access to the Union Square transportation hub's 4 5 6 L N Q R W express and local subway lines, and vicinity of NJ PATH station at 23rd St/6th Ave
- Steps from the farmers market and Broadway's retail corridor offering a wide selection of shopping and dining options, fitness studios, and a myriad of other work/lifestyle benefits

SUITE 1707 - 2,210 RSF
(AS-BUILT / PROPOSED FURNITURE LAYOUT)





West View



North View

